



**Fairfax County**  
PUBLIC SCHOOLS

ENGAGE • INSPIRE • THRIVE

**BOUNDARY STUDY  
COMMUNITY MEETING**  
December 7, 2020

McLean HS/Langley HS  
Longfellow MS/Cooper MS

# Boundary Study Meeting

Fabio Zuluaga, Assistant Superintendent, Region 2

Douglas Tyson, Assistant Superintendent, Region 1

Jeff Platenberg, Assistant Superintendent, Facilities and Transportation

Jessica Gillis, Special Projects Administrator, Facilities

- Welcome and Introductions
- Presentation
- Small group discussion
- Next steps

# Elaine Tholen, School Board Member Dranesville District

Welcome

- Why continue this study now?
- What is next?

Community Advisory Council

Maya Amman, McLean HS - junior

Jim Beggs, McLean Citizen Association

Pranav Choudhary, Langley HS - junior

Jamie Deaton, Wolf Den HOA

Vance Gore, McSpaces

Paul Overberg, Carrington Community Association

Kate Phillips, Shouse Village HOA

Lizzy Pike, Wolf Trap Woods Homes Association

Fadi Shadid, Great Falls Citizen Association

# Boundary Study Meeting

## Purpose:

The purpose of the boundary adjustment is to provide capacity relief to McLean High School by using available capacity at the newly renovated Langley High School.

# Boundary Study Meeting

- Share options for boundary adjustment.
- Collect community feedback to form staff recommendation to the School Board.
- No vote on options tonight.
- School Board votes to approve the boundary adjustment at a later date.

# Boundary Scope – December 2019

## Boundary scope

- Collected input on what schools should be included in the boundary study
- Feedback suggested that Longfellow MS and Cooper MS should be included
- School Board voted in Spring 2020 to include the middle schools in boundary study

# Boundary Scope Meeting

McLean HS is over capacity

- Current enrollment 2,350 students
- Designed for 1,993 students

Langley HS renovation finished

- Current enrollment 1,972 students
- Designed for 2,370 students

# Boundary Scope Meeting

Longfellow MS is approaching a capacity deficit

- Current enrollment 1,334 students
- Designed for 1,374 students

Cooper MS is beginning renovation

- Current enrollment 992 students
- Renovation designed for 1,120 students



# Boundary Adjustments

The process to change a school boundary is outlined in Policy 8130.7 and Regulation 8130.9

# Boundary Adjustment Process

## 1. Boundary Scope

The community is asked to suggest which schools/areas should be considered in a boundary adjustment.

## 2. Boundary Study

Possible boundary change options are offered for consideration. A meeting is held to share the options with the community and collect feedback on the options.

## 3. School Board Meeting – New Business

Staff present a recommendation to the School Board.

## 4. School Board Meeting – Public Hearing

Community members speak before the School Board to share their views on the proposed boundary adjustment.

## 5. School Board Action

The School Board considers the option presented by staff and Public Hearing comments and takes action on the boundary change.

# McLean HS Capacity Solutions

Over the past 10 years, McLean HS has grown, increasing their capacity deficit:

School Year	Program Capacity	Membership	Utilization	
SY 2009-10	1,969	1,863	95%	Approaching/slight capacity deficit.
SY 2010-11	1,877	1,924	103%	
SY 2011-12	1,944	1,974	102%	Moderate capacity deficit.
SY 2012-13	1,986	2,087	105%	
SY 2013-14	1,986	2,073	104%	Approaching/slight capacity deficit.
SY 2014-15	1,984	2,050	103%	
SY 2015-16	1,967	2,089	106%	Moderate capacity deficit.
SY 2016-17	1,967	2,053	104%	
SY 2017-18	1,983	2,167	109%	Moderate capacity deficit.
SY 2018-19	1,982	2,255	114%	
SY 2019-20	1,992	2,350	118%	Substantial capacity deficit.

Sources: FCPS, Certified Membership, September 2009 to September 2019;  
 FCPS, Adopted Capital Improvement Programs (CIPs), Fiscal Year (FY) 2011-15 to  
 FY 2020-24.

Note: Temporary classrooms added space for students, but are not counted toward  
 program capacity.

# McLean HS Capacity Solutions Summary

- SY 2012-13: Added four temporary classrooms
- SY 2013-14: Added four temporary classrooms
- SY 2018-19: Added four temporary classrooms  
Weight Room Expanded
- SY 2019-20: Added four temporary classrooms  
Removed lockers due to hallway crowding
- SY 2020-21: Converted two classrooms to Bio/Chem Labs  
Modular Installed (12 classrooms)

# McLean HS Capacity Solutions

The modular will replace 12 temporary classrooms.  
Increases program capacity of McLean HS from 1,992 to 2,343.

## Modified FY 2021-25 Capital Improvement Program (CIP) Reflecting Modular

							PROJECTED MEMBERSHIP					PROJECTED PROGRAM CAPACITY UTILIZATION				
School	Design Capacity	Program Capacity	SY 19-20 Membership	Program Capacity Utilization %	Temporary Classrooms	Modular Classrooms	SY 20-21	SY 21-22	SY 22-23	SY 23-24	SY 24-25	SY 20-21	SY 21-22	SY 22-23	SY 23-24	SY 24-25
McLean HS	2,343	2,343	2,350	100%	6	12	2,409	2,428	2,403	2,540	2,425	103%	104%	103%	108%	103%

Projections Source: FCPS, *FY 2021-25 Capital Improvement Program*, January 2020.

<sup>1</sup>McLean HS design and program capacity modified to reflect the addition of a modular.

Notes: Numbers highlighted in yellow are future design capacity and project capacity utilization percentages after a renovation or capacity enhancement

Temporary classrooms added space for students, but are not counted toward program capacity.

# Cooper MS Renovation

- Expanded the scope to include middle schools
- Began renovation October 2020
  - Estimated completion for SY 2023-24
- Design capacity of 1,120 students
- Limits options for implementation in a boundary adjustment



*Aerial of Cooper MS with Modular Removed*

# Cooper MS Renovation

The renovation will have a capacity of an estimated 1,120 students once complete.

## Modified FY 2021-25 Capital Improvement Program (CIP) Reflecting Renovation

							PROJECTED MEMBERSHIP					PROJECTED PROGRAM CAPACITY UTILIZATION				
School	Design Capacity	Program Capacity	SY 19-20 Membership	Program Capacity Utilization %	Temporary Classrooms	Modular Classrooms	SY 20-21	SY 21-22	SY 22-23	SY 23-24	SY 24-25	SY 20-21	SY 21-22	SY 22-23	SY 23-24	SY 24-25
Cooper MS	1,080 / 1,120	1,120	992	89%	4	-	951	958	976	975	980	85%	86%	87%	87%	88%

Projections Source: FCPS, *FY 2021-25 Capital Improvement Program*, January 2020.

<sup>1</sup>McLean HS design and program capacity modified to reflect the addition of a modular.

Notes: Numbers highlighted in yellow are future design capacity and project capacity utilization percentages after a renovation or capacity enhancement

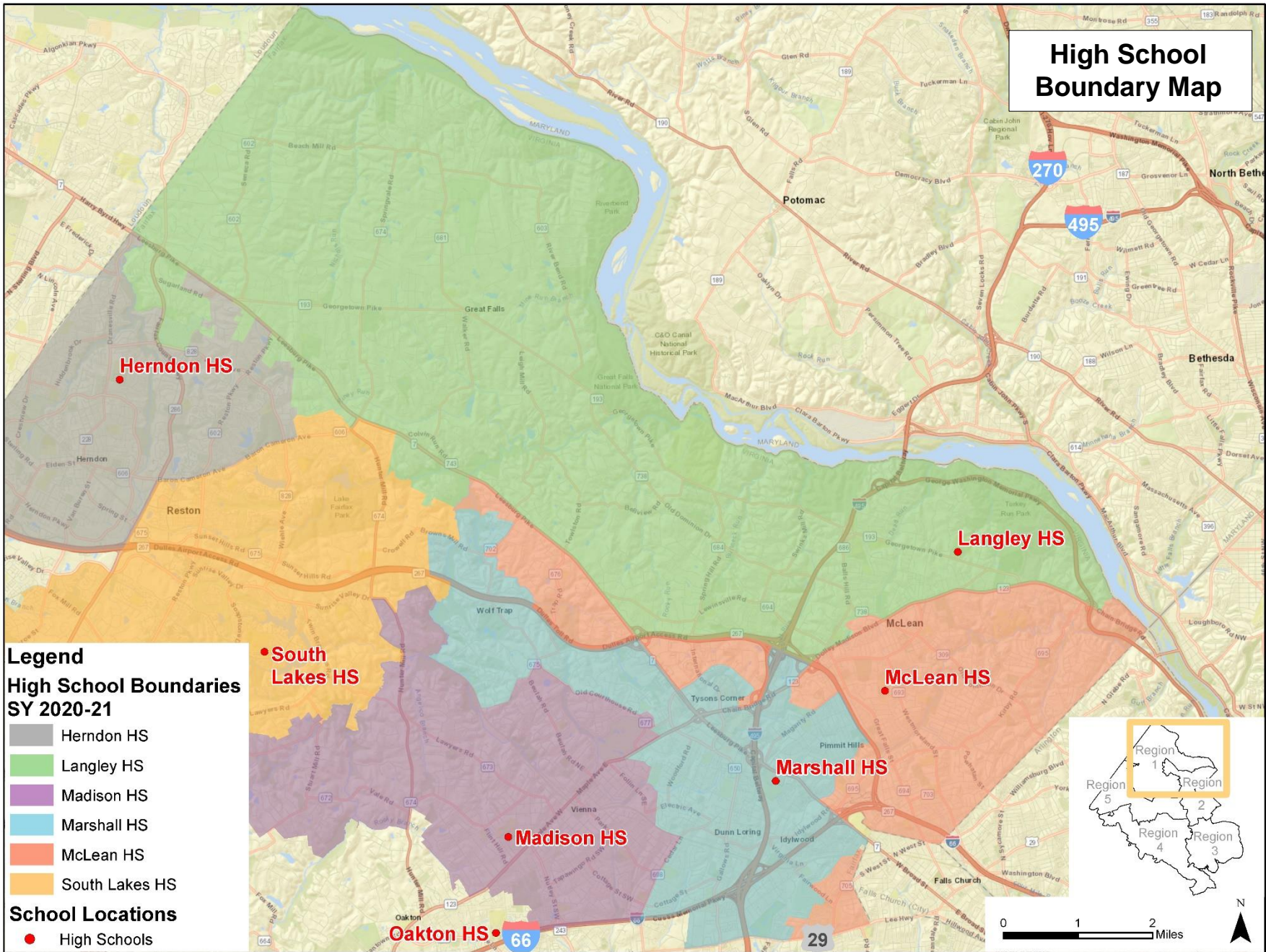
Temporary classrooms added space for students but are not counted toward program capacity.

# Actions to Date

- March 9, 2020 School Board Work Session
  - Expanded scope to include Longfellow and Cooper middle schools in the boundary study
- March 2020
  - Began the process to install a 12-classroom modular to replace some temporary classrooms at McLean HS
  - Anticipate to be ready for the second semester
- November 2020
  - Established a Schools Task Force for Tysons area development
- Today
  - Boundary Study Meetings



# High School Boundary Map



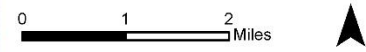
## Legend

### High School Boundaries

#### SY 2020-21

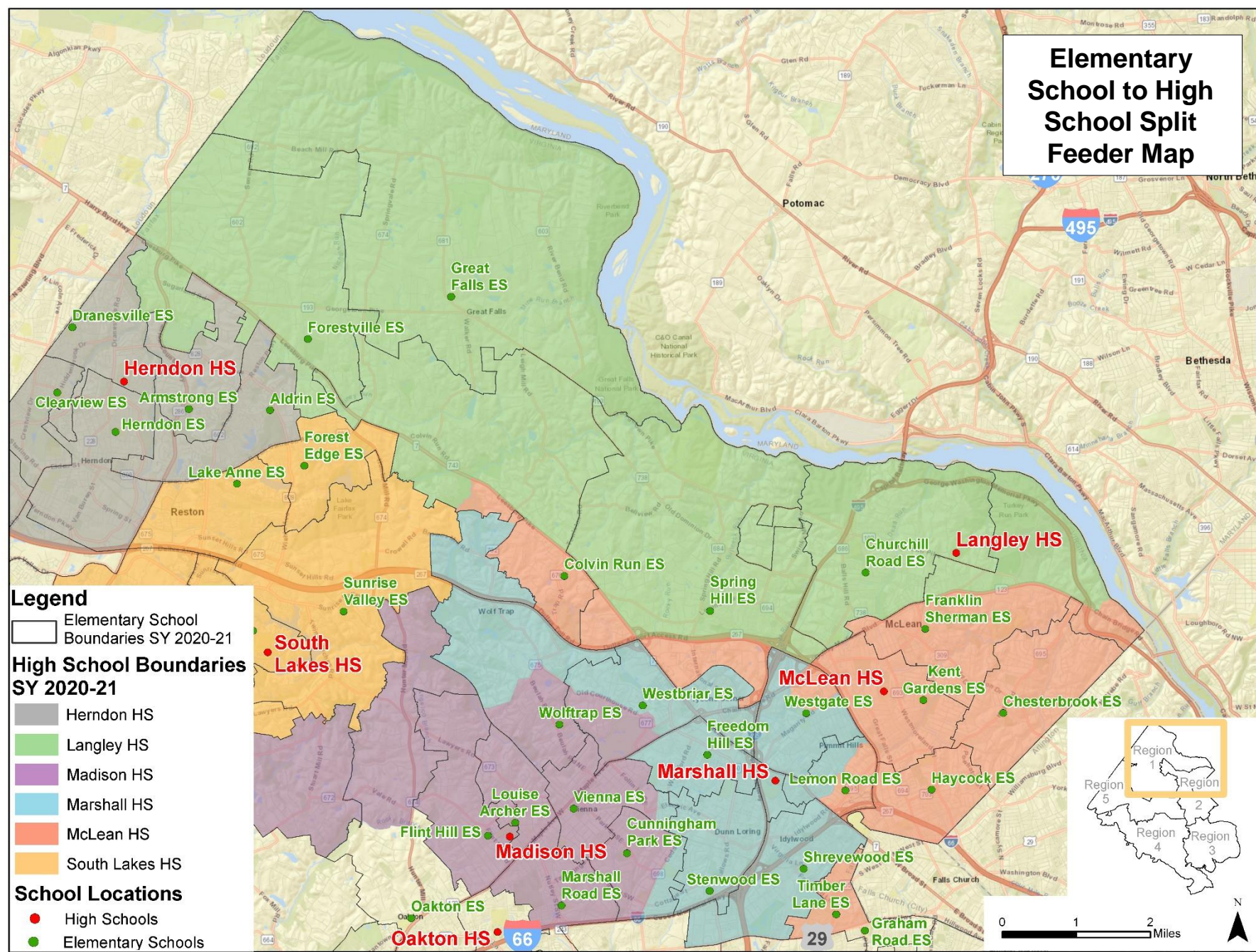
- Herndon HS
- Langley HS
- Madison HS
- Marshall HS
- McLean HS
- South Lakes HS

- ### School Locations
- High Schools





# Elementary School to High School Split Feeder Map



**Legend**

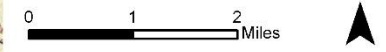
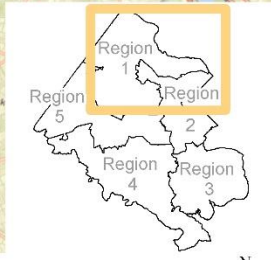
- Elementary School Boundaries SY 2020-21

**High School Boundaries SY 2020-21**

- Herndon HS
- Langley HS
- Madison HS
- Marshall HS
- McLean HS
- South Lakes HS

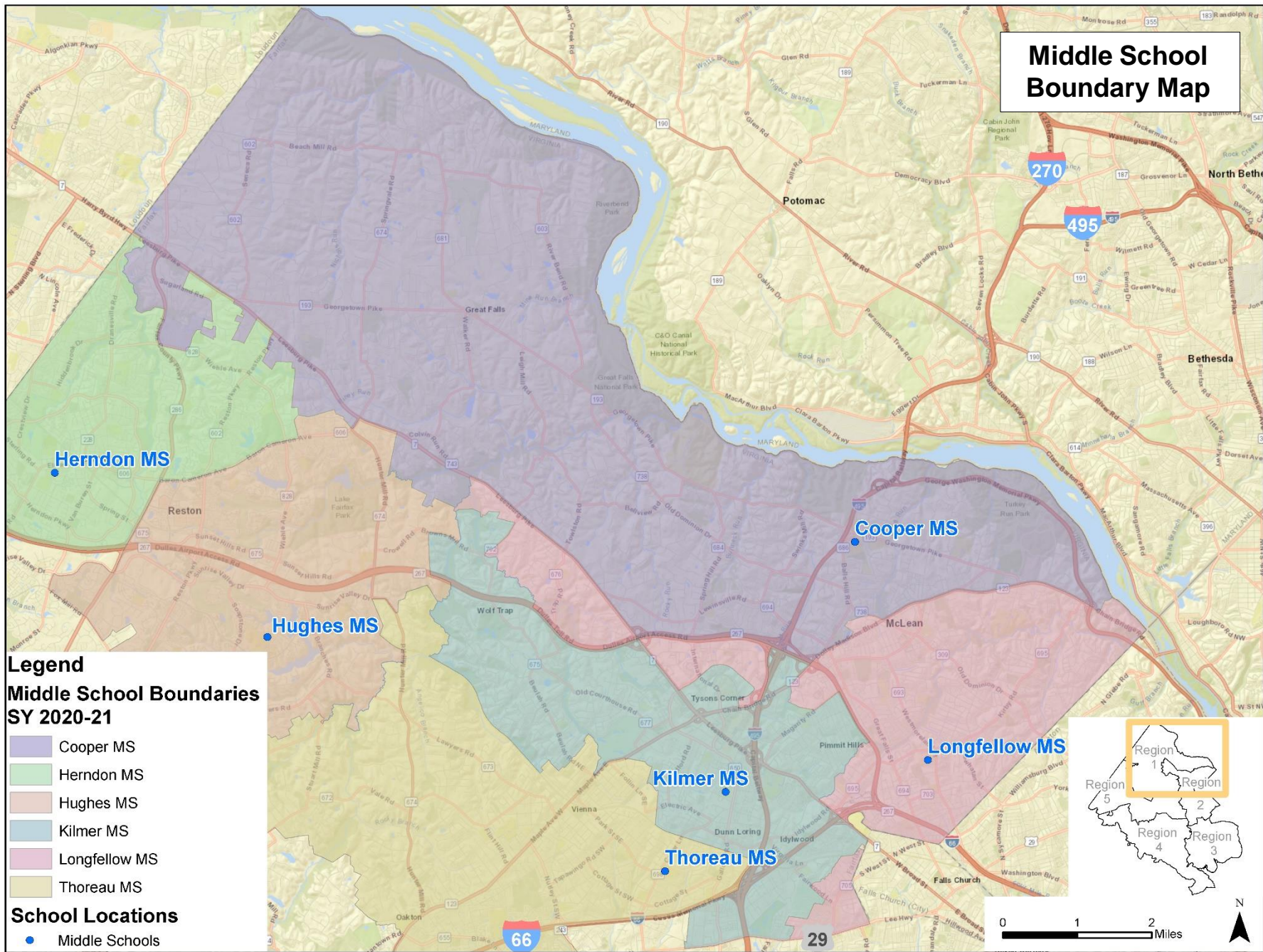
**School Locations**

- High Schools
- Elementary Schools



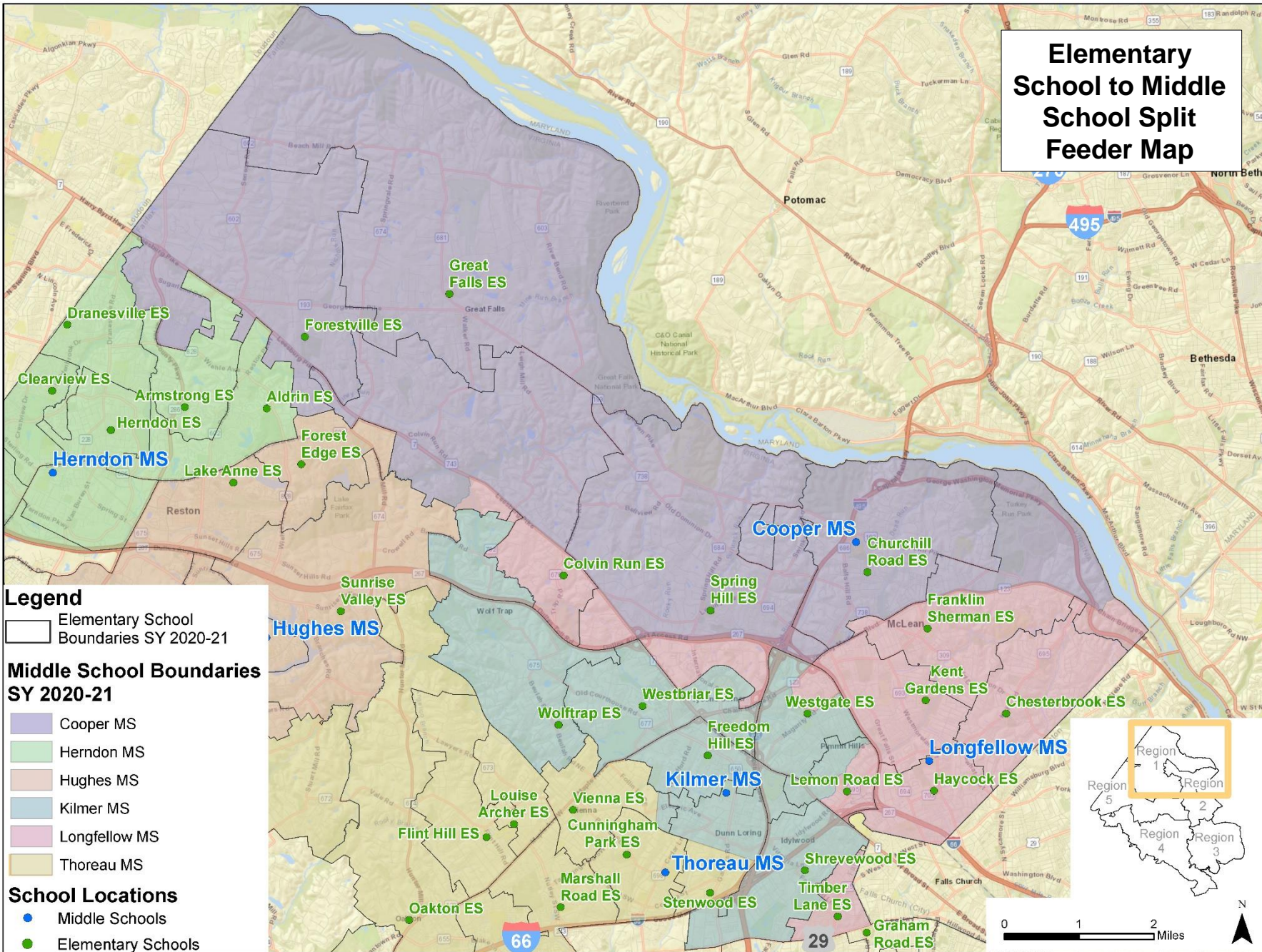


# Middle School Boundary Map





# Elementary School to Middle School Split Feeder Map



**Legend**

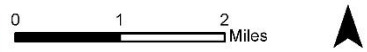
- Elementary School Boundaries SY 2020-21

**Middle School Boundaries SY 2020-21**

- Cooper MS
- Herndon MS
- Hughes MS
- Kilmer MS
- Longfellow MS
- Thoreau MS

**School Locations**

- Middle Schools
- Elementary Schools



# Tonight: Boundary Study Meeting

- Options have been developed based on feedback from boundary scope meetings in December 2019
- The options can be modified based on feedback from tonight
- The feedback will help inform the staff recommendation on the boundary adjustment presented to the School Board

# December 2019 Boundary Scoping Feedback

## Boundary Feedback

- Include middle schools in the study
- Consider adjustment to high schools other than Langley HS
  - Falls Church, Herndon, Madison, Marshall, or South Lakes high schools
- Evaluate other elementary schools
  - Franklin Sherman ES (split feeder to McLean/Langley)
  - Chesterbrook ES

## Other Feedback

- Expansion of McLean HS
- Renovation of McLean HS
- New High School

# Boundary Scoping Feedback

**What areas should be considered for boundary adjustment?**

Major feedback themes:

- Address split feeders
- Balance capacity
- Consider other high schools in the study
  - Falls Church, Herndon, Madison, Marshall, or South Lakes high schools
- Consider other areas as part of an adjustment
  - Franklin Sherman ES (split feeder to McLean/Langlely)
  - Chesterbrook ES



# Development of Options

- Ran several options
- Options were eliminated when:
  - New overcrowding was created
  - Created infrastructure issues
  - Created transportation issues
- Areas eliminated are posted in a report on the boundary website
- Options shown tonight do not create additional overcrowding concerns
- Options can be modified based on feedback from tonight
- Your feedback will help inform the staff recommendation presented to the School Board
- School Board will vote on any adjustment



# Options for Consideration

- Following options are for consideration
- Enrollment estimates do not show phasing/grandfathering
  - Phasing will be implemented “through attrition” consistent with Policy 8130.7
  - Example of phasing through attrition:

Year 1	7 <sup>th</sup>	8 <sup>th</sup>	9 <sup>th</sup>	10 <sup>th</sup>	11 <sup>th</sup>	12 <sup>th</sup>	 Stay at current school Move to new school
Year 2	7 <sup>th</sup>	8 <sup>th</sup>	9 <sup>th</sup>	10 <sup>th</sup>	11 <sup>th</sup>	12 <sup>th</sup>	
Year 3			9 <sup>th</sup>	10 <sup>th</sup>	11 <sup>th</sup>	12 <sup>th</sup>	
Year 4			9 <sup>th</sup>	10 <sup>th</sup>	11 <sup>th</sup>	12 <sup>th</sup>	

- No current students attending Longfellow/Cooper or McLean/Langley will be reassigned
- Student adjustments are estimates using SY 2019-20 numbers and will vary based on the following:
  - Phasing
  - Transfer for other program offerings of FCPS

# Option A

- Considers reassigning students from McLean HS to Langley HS and from Longfellow MS to Cooper MS in the Colvin Run ES split feeder area and a portion of Westbriar ES
  - Estimates 131 students from McLean HS to Langley HS
  - Estimates 53 students from Longfellow MS to Cooper MS
- Enrollment estimates do not show phasing/grandfathering
- No current students attending Longfellow/Cooper or McLean/Langley will be reassigned
- Student adjustments shown are estimates using SY 2019-20 numbers and will vary

Facility	SY 2019-20			Projected Membership and Capacity Utilization			
School	Program Capacity	Member-ship	Program Capacity Utilization	SY20-21 Projected Membership	SY20-21 Projected Capacity Utilization	SY24-25 Projected Membership	SY24-25 Projected Capacity Utilization
McLean HS <sup>1</sup>	2,343	2,350	100%	2,409	103%	2,425	103%
Langley HS	2,370	1,972	83%	2,016	85%	1,855	78%
Longfellow MS	1,374	1,334	97%	1,420	103%	1,390	101%
Cooper MS <sup>2</sup>	1,120	992	89%	951	85%	980	88%
ADJUSTED McLean HS <sup>1</sup>	2,343	2,219	95%	2,277	97%	2,287	98%
ADJUSTED Langley HS	2,370	2,103	89%	2,148	91%	1,993	84%
ADJUSTED Longfellow MS	1,374	1,281	93%	1,356	99%	1,322	96%
ADJUSTED Cooper MS <sup>2</sup>	1,120	1,045	93%	1,015	91%	1,048	94%

<sup>1</sup>McLean HS design and program capacity reflect the addition of a modular. Construction estimated to complete in December 2020.

<sup>2</sup>Cooper MS design and program capacity reflect the renovation. Construction began in fall 2020.

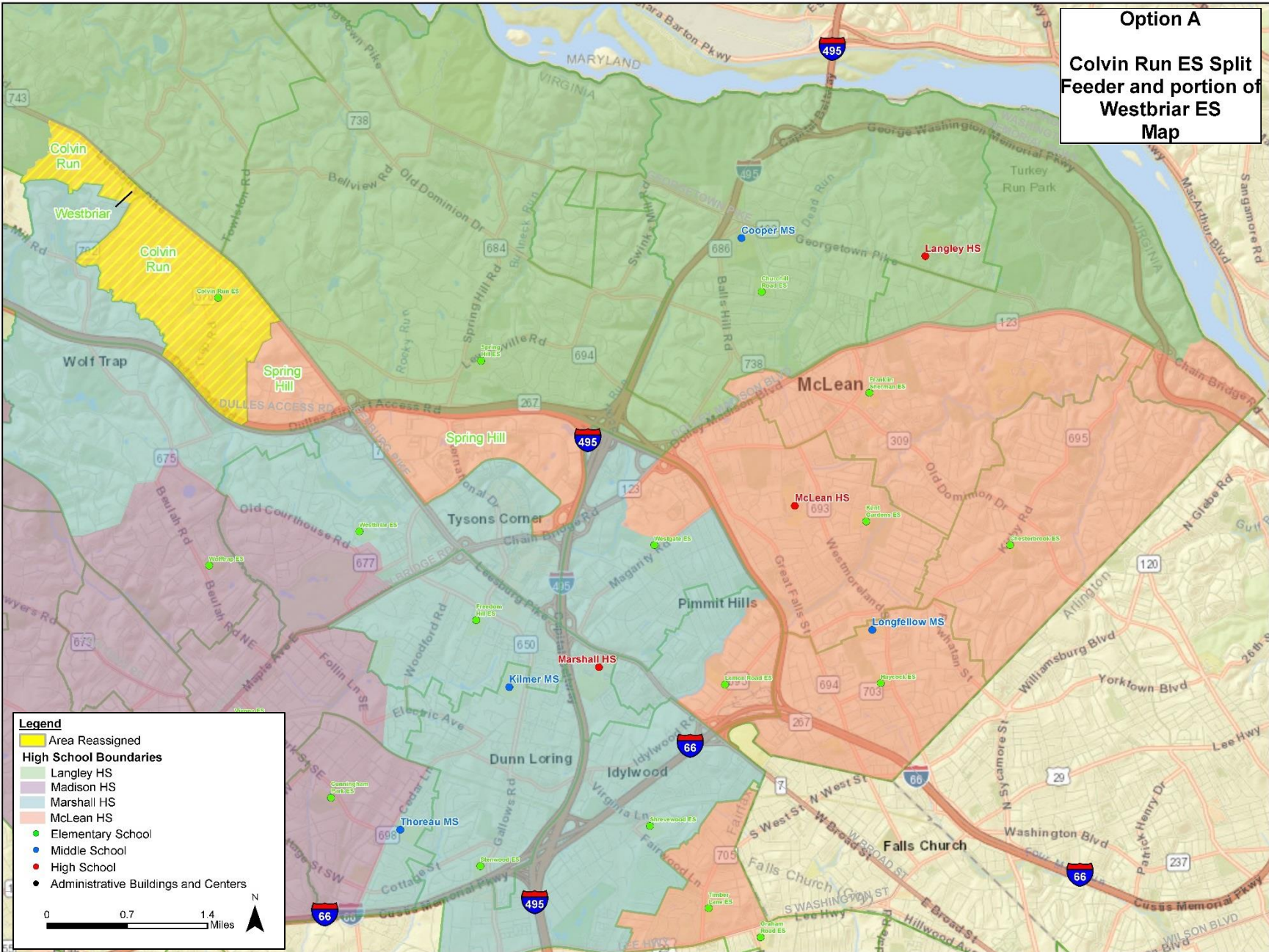
Sources: FCPS, *FY 2021-25 Capital Improvement Program*, January 2020. FCPS Facilities Planning Services, *SY 2019-20 Modified Capacity, Membership, and Projections*.

Notes: 1) Numbers highlighted in yellow are future design capacity after a renovation.

2) Student adjustment considers all residing students and does not factor in transfers to other schools.

3) Student adjustment includes special education or postgraduate students.

**Option A**  
**Colvin Run ES Split**  
**Feeder and portion of**  
**Westbriar ES**  
**Map**



**Legend**

- Area Reassigned
- High School Boundaries
  - Langley HS
  - Madison HS
  - Marshall HS
  - McLean HS
- Elementary School
- Middle School
- High School
- Administrative Buildings and Centers

0 0.7 1.4 Miles

N

# Option B

- Considers reassigning students from McLean HS to Langley HS and from Longfellow MS to Cooper MS in the Colvin Run ES split feeder area, a portion of the Spring Hill ES split feeder area, and a portion of Westbriar ES
  - Estimates 190 students from McLean HS to Langley HS
  - Estimates 78 students from Longfellow MS to Cooper MS
- Enrollment estimates do not show phasing/grandfathering
- No current students attending Longfellow/Cooper or McLean/Langley will be reassigned
- Student adjustments shown are estimates using SY 2019-20 numbers and will vary

Facility	SY 2019-20			Projected Membership and Capacity Utilization			
School	Program Capacity	Member-ship	Program Capacity Utilization	SY20-21 Projected Membership	SY20-21 Projected Capacity Utilization	SY24-25 Projected Membership	SY24-25 Projected Capacity Utilization
McLean HS <sup>1</sup>	2,343	2,350	100%	2,409	103%	2,425	103%
Langley HS	2,370	1,972	83%	2,016	85%	1,855	78%
Longfellow MS	1,374	1,334	97%	1,420	103%	1,390	101%
Cooper MS <sup>2</sup>	1,120	992	89%	951	85%	980	88%
ADJUSTED McLean HS <sup>1</sup>	2,343	2,160	92%	2,215	95%	2,213	94%
ADJUSTED Langley HS	2,370	2,162	91%	2,210	93%	2,067	87%
ADJUSTED Longfellow MS	1,374	1,256	91%	1,325	96%	1,292	94%
ADJUSTED Cooper MS <sup>2</sup>	1,120	1,070	96%	1,046	93%	1,078	96%

<sup>1</sup>McLean HS design and program capacity reflect the addition of a modular. Construction estimated to complete in December 2020.

<sup>2</sup>Cooper MS design and program capacity reflect the renovation. Construction began in fall 2020.

Sources: FCPS, FY 2021-25 Capital Improvement Program, January 2020. FCPS Facilities Planning Services, SY 2019-20 Modified Capacity, Membership, and Projections.

Notes: 1) Numbers highlighted in yellow are future design capacity after a renovation.

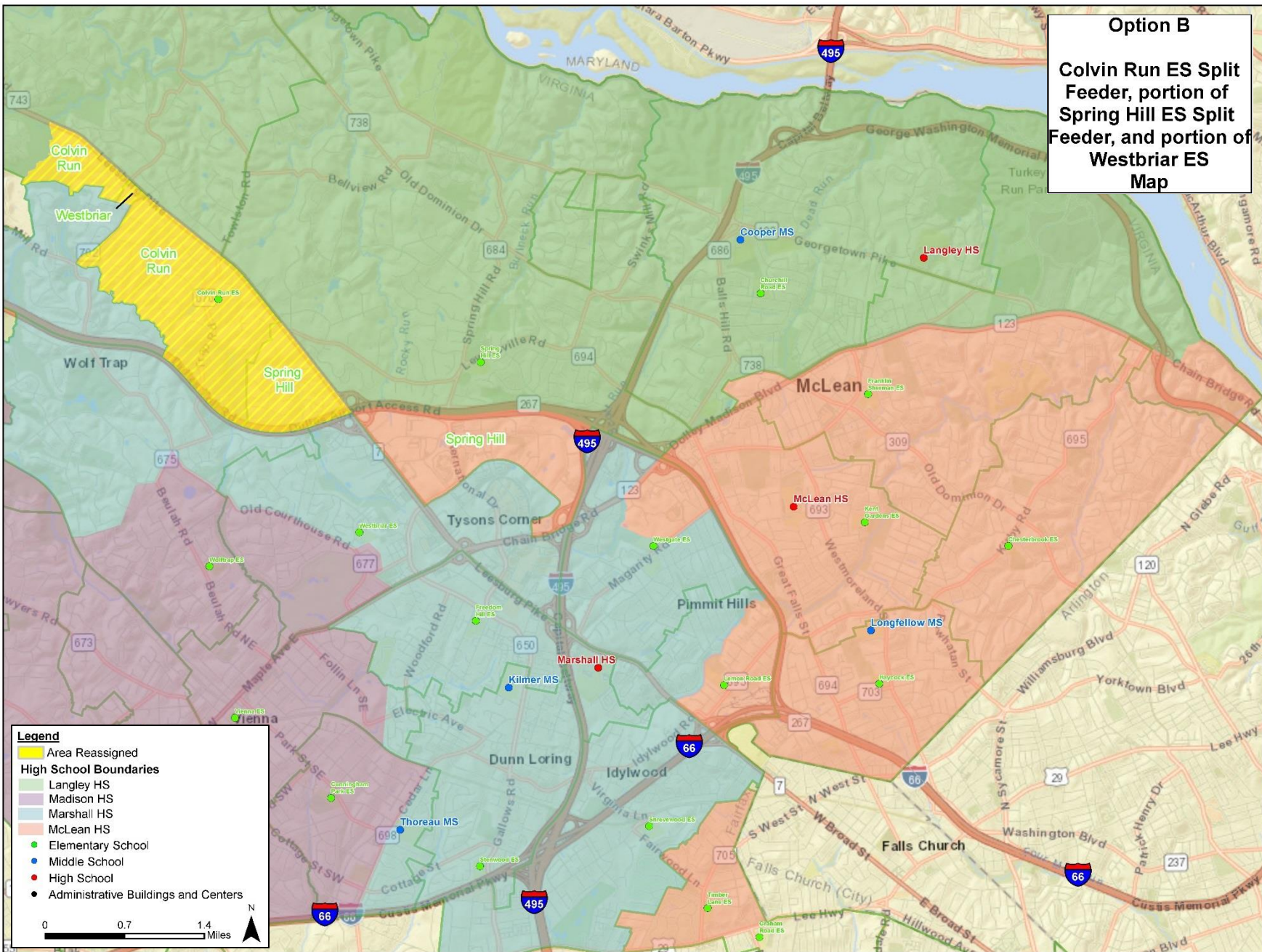
2) Student adjustment considers all residing students and does not factor in transfers to other schools.

3) Student adjustment includes special education or postgraduate students.



### Option B

Colvin Run ES Split Feeder, portion of Spring Hill ES Split Feeder, and portion of Westbriar ES Map



# Option C

- Considers reassigning students from McLean HS to Langley HS and from Longfellow MS to Cooper MS in the Spring Hill ES split feeder area
  - Estimates 240 students from McLean HS to Langley HS
  - Estimates 113 students from Longfellow MS to Cooper MS
- Enrollment estimates do not show phasing/grandfathering
- No current students attending Longfellow/Cooper or McLean/Langley will be reassigned
- Student adjustments shown are estimates using SY 2019-20 numbers and will vary

Facility	SY 2019-20			Projected Membership and Capacity Utilization			
School	Program Capacity	Membership	Program Capacity Utilization	SY20-21 Projected Membership	SY20-21 Projected Capacity Utilization	SY24-25 Projected Membership	SY24-25 Projected Capacity Utilization
McLean HS <sup>1</sup>	2,343	2,350	100%	2,409	103%	2,425	103%
Langley HS	2,370	1,972	83%	2,016	85%	1,855	78%
Longfellow MS	1,374	1,334	97%	1,420	103%	1,390	101%
Cooper MS <sup>2</sup>	1,120	992	89%	951	85%	980	88%
ADJUSTED McLean HS <sup>1</sup>	2,343	2,110	90%	2,140	91%	2,075	89%
ADJUSTED Langley HS	2,370	2,212	93%	2,285	96%	2,205	93%
ADJUSTED Longfellow MS	1,374	1,221	89%	1,299	95%	1,260	92%
ADJUSTED Cooper MS <sup>2</sup>	1,120	1,105	99%	1,072	96%	1,110	99%

<sup>1</sup>McLean HS design and program capacity reflect the addition of a modular. Construction estimated to complete in December 2020.

<sup>2</sup>Cooper MS design and program capacity reflect the renovation. Construction began in fall 2020.

Sources: FCPS, FY 2021-25 Capital Improvement Program, January 2020. FCPS Facilities Planning Services, SY 2019-20 Modified Capacity, Membership, and Projections.

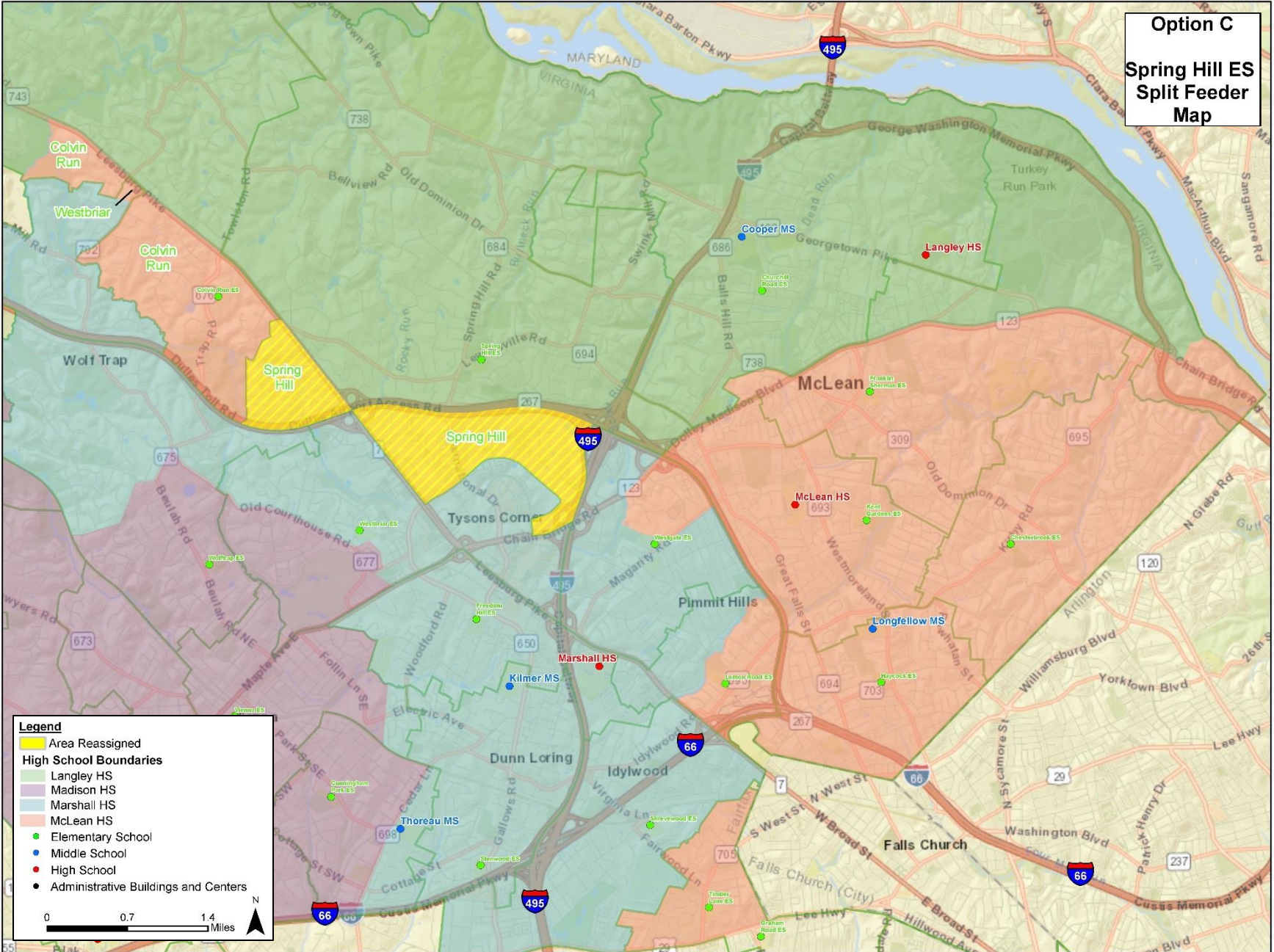
Notes: 1) Numbers highlighted in yellow are future design capacity after a renovation.

2) Student adjustment considers all residing students and does not factor in transfers to other schools.

3) Student adjustment includes special education or postgraduate students.



**Option C**  
**Spring Hill ES**  
**Split Feeder**  
**Map**



**Legend**

- Area Reassigned
- High School Boundaries**
- Langley HS
- Madison HS
- Marshall HS
- McLean HS
- Elementary School
- Middle School
- High School
- Administrative Buildings and Centers

0 0.7 1.4 Miles

N

# No Boundary Change Option

- Does not consider reassigning students from McLean HS to Langley HS or from Longfellow MS to Cooper MS
- Student projections shown are estimates as shown in FCPS Fiscal Year (FY) 2021-25 Capital Improvement Program (CIP)

Facility	SY 2019-20			Projected Membership and Capacity Utilization			
School	Program Capacity	Member-ship	Program Capacity Utilization	SY20-21 Projected Membership	SY20-21 Projected Capacity Utilization	SY24-25 Projected Membership	SY24-25 Projected Capacity Utilization
McLean HS <sup>1</sup>	2,343	2,350	100%	2,409	103%	2,425	103%
Langley HS	2,370	1,972	83%	2,016	85%	1,855	78%
Longfellow MS	1,374	1,334	97%	1,420	103%	1,390	101%
Cooper MS <sup>2</sup>	1,120	992	89%	951	85%	980	88%

<sup>1</sup>McLean HS design and program capacity reflect the addition of a modular. Construction estimated to complete in December 2020.

<sup>2</sup>Cooper MS design and program capacity reflect the renovation. Construction began in fall 2020.

Sources: FCPS, *FY 2021-25 Capital Improvement Program*, January 2020. FCPS Facilities Planning Services, *SY 2019-20 Modified Capacity, Membership, and Projections*.

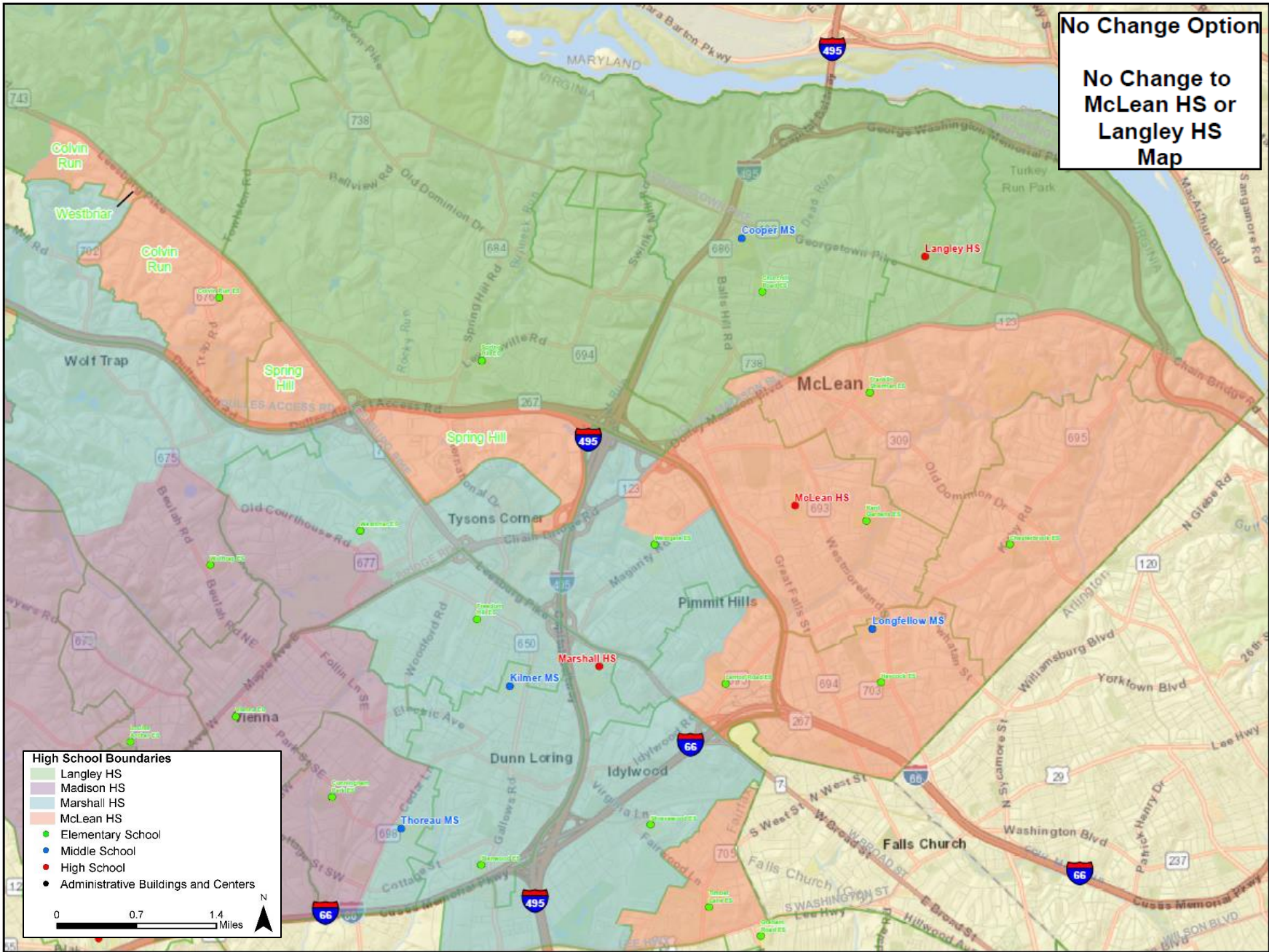
Notes: 1) Numbers highlighted in yellow are future design capacity after a renovation.

2) Student adjustment considers all residing students and does not factor in transfers to other schools.

3) Student adjustment includes special education or postgraduate students.



No Change Option  
 No Change to  
 McLean HS or  
 Langley HS  
 Map



**High School Boundaries**

- Langley HS
- Madison HS
- Marshall HS
- McLean HS

- Elementary School
- Middle School
- High School
- Administrative Buildings and Centers

0 0.7 1.4 Miles

N

# Phasing (or Grandfathering)

Policy 8130.7 addresses phasing (also commonly referred to as grandfathering) in Section XI:

## “XI. PHASING OF ADJUSTMENTS

When possible, adjustments under this policy shall be implemented through attrition and phasing. The School Board may approve a grade-by-grade phase-in of adjustments for students beginning with the incoming class at the middle or high school levels, when feasible. The School Board may adopt other phasing plans as appropriate to the individual boundary study.


Parents of rising sixth (or fifth) graders, eighth graders, and twelfth graders affected by a boundary change may, at the discretion of the School Board, be provided the option of having their students remain in the school they attended prior to the change.”

The School Board will decide any other phasing plan when considering action to change any school boundary.

# Phasing (or Grandfathering)

- Example of phasing through attrition:

Year 1	7 <sup>th</sup>	8 <sup>th</sup>	9 <sup>th</sup>	10 <sup>th</sup>	11 <sup>th</sup>	12 <sup>th</sup>	
Year 2	7 <sup>th</sup>	8 <sup>th</sup>	9 <sup>th</sup>	10 <sup>th</sup>	11 <sup>th</sup>	12 <sup>th</sup>	
Year 3			9 <sup>th</sup>	10 <sup>th</sup>	11 <sup>th</sup>	12 <sup>th</sup>	
Year 4			9 <sup>th</sup>	10 <sup>th</sup>	11 <sup>th</sup>	12 <sup>th</sup>	

 Stay at current school  
 Move to new school





# Virtual Breakout Rooms





**WORK IN  
VIRTUAL  
BREAKOUT  
ROOMS**



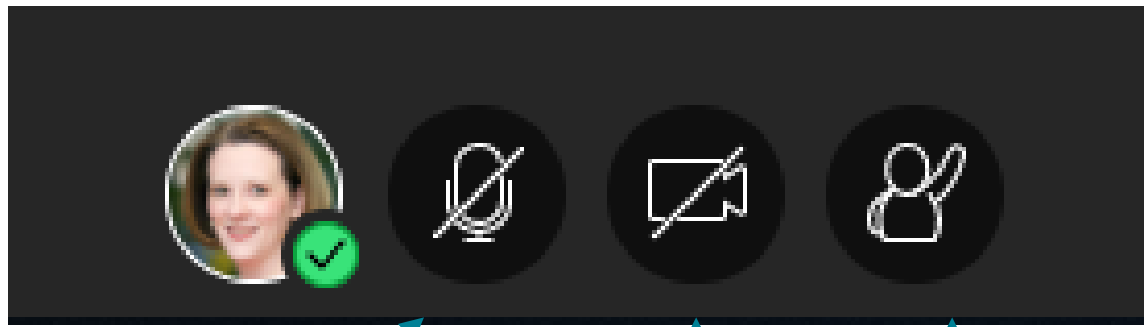
**PROVIDE  
FEEDBACK ON  
OPTIONS BY  
SUBMITTING  
IDEAS VIA  
PADLET**



**SHARE IDEAS IN  
THE BREAKOUT  
GROUPS**



**ALL FEEDBACK  
WILL BE  
POSTED ON  
WEBSITE AND  
SHARED WITH  
THE SCHOOL  
BOARD**



Unmute/mute microphone

Turn camera off/on

Raise your hand to speak



## Questions:

- What are the strengths of each option?
- What are the challenges of each option?
- What else would you like FCPS to know?



# Padlet

padlet

Ed Specs for PD • 2h

## Boundary Study Group 1

What are the strengths and challenges of Option A?

Considers reassigning students from McLean HS to Langley HS and from Longfellow MS to Cooper MS in the Colvin Run ES split feeder area and a portion of Westbriar ES

+

What are the strengths and challenges of Option B?

Considers reassigning students from McLean HS to Langley HS and from Longfellow MS to Cooper MS in the Colvin Run ES split feeder area, a portion of the Spring Hill ES split feeder area, and a portion of Westbriar ES

+

What are the strengths and challenges of Option C?

Considers reassigning students from McLean HS to Langley HS and from Longfellow MS to Cooper MS in the Spring Hill ES split feeder area

+

What are the strengths and challenges of Option D?

Does not consider reassigning students from McLean HS to Langley HS or from Longfellow MS to Cooper MS

+

What else would you like FCPS to know?

+

ADD CC

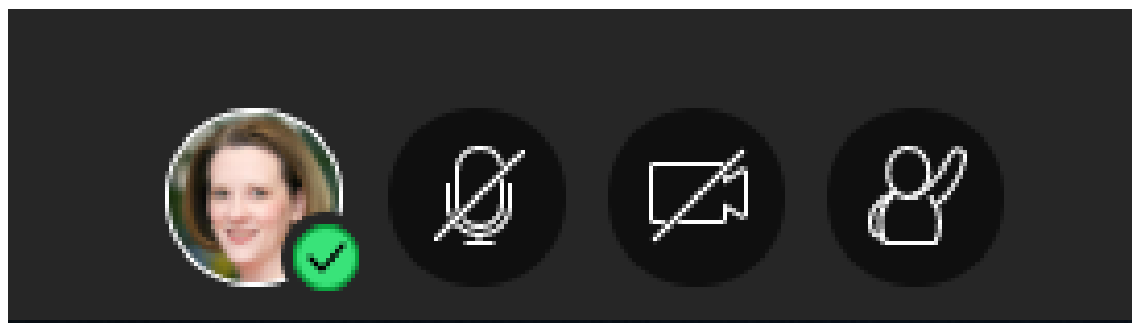


# Padlet

Coaches, insert your QR code here

# Share Out

Is there anything you would like to share out for the good of the group? (Limit 1 minute)



Unmute/mute microphone

Turn camera off/on

Raise your hand to speak



Return to Main Meeting Room

# Boundary Process Next Steps

Evaluation of Comments	December 2020
Staff Recommendation to School Board (at Regular School Board Meeting)	TBD
School Board Public Hearing	TBD
School Board Action	TBD

Anticipated Effective Date of Boundary Adjustment:  
SY 2021-22



Updates posted on FCPS website:

[www.fcps.edu](http://www.fcps.edu)

Search “McLean Boundary”



Fairfax County  
PUBLIC SCHOOLS  
ENGAGE • INSPIRE • THRIVE

[www.fcps.edu](http://www.fcps.edu)