

McLean/Langley Boundary Study

Background

Two boundary scoping community meetings were held in December 2019, one at Langley High School (HS) and one at McLean HS for the McLean Boundary Study. The purpose of the meetings was to provide information to the community and receive community feedback via small group work. Three scenarios were presented to the community for consideration and to encourage the discussion in further development of options for consideration. The feedback collected at the community meetings included thoughts and ideas about the scenarios presented as well as additional ideas. Comments from the community meeting further inform the Mclean HS/Langley HS boundary study and the options developed in this document.

One major theme in the community feedback was to include middle schools to address split feeders at all levels. In accordance with School Board Regulation 8130.9, *Local School Boundaries, Program Assignments, and School Closings*, the scope was expanded to include the middle schools in the boundary study at the School Board meeting held on March 9, 2020.

Proposed options have been prepared for consideration based on the expanded scope and input received at the community meetings. Two of the three scenarios presented at the community meetings in December 2019 have been considered in these options and one additional option has been developed. A no change option has also been included. Additional community feedback, such as considering the areas assigned to Franklin Sherman ES or Chesterbrook ES, were evaluated and are included in this document as additional information. These were eliminated for further consideration because they created a new capacity deficit at a school involved.

Since the December 2019 scoping meetings, the installation of a twelve classroom modular at McLean HS for capacity relief occurred and the renovation of Cooper MS has begun. These projects have been incorporated into the program capacity and the projected capacity utilization for McLean HS and Cooper MS for consideration of options.

It is important to note that enrollment estimates in the options in this report do not show phasing (commonly referred to as grandfathering) to show the full impact to the facility over time. Phasing will be implemented “through attrition” consistent with Policy 8130.7. A example of this is in Table 1.

Table 1: Example of Phasing Through Attrition

Year 1	7 th	8 th	9 th	10 th	11 th	12 th
Year 2	7 th	8 th	9 th	10 th	11 th	12 th
Year 3			9 th	10 th	11 th	12 th
Year 4			9 th	10 th	11 th	12 th



No current students attending Longfellow/Cooper or McLean/Langley will be reassigned.

Additional considerations regarding numbers shown in options within this report:

- Student adjustments shown are estimates using SY 2019-20 numbers and will vary with implementation.
- Adjustment numbers are on best available information and do not reflect transfers and/or instructional choices made by students, parents, and/or caregivers.
- Any option chosen would delay capacity relief until phasing is complete and the change is fully implemented.
- Phasing of an adjustment would allow schools to adjust space use each year until phasing of the change is complete.

McLean High School Capacity Deficit and Solutions

Over the past 10 years, McLean HS has grown in student membership, increasing their capacity deficit as shown in Table 2.

Table 2: McLean HS Ten-Year History of Capacity and Membership

School Year	Program Capacity	Membership	Capacity Utilization	
SY 2009-10	1,969	1,863	95%	
SY 2010-11	1,877	1,924	103%	Approaching/slight capacity deficit.
SY 2011-12	1,944	1,974	102%	
SY 2012-13	1,986	2,087	105%	Moderate capacity deficit.
SY 2013-14	1,986	2,073	104%	Approaching/slight capacity deficit.
SY 2014-15	1,984	2,050	103%	
SY 2015-16	1,967	2,089	106%	Moderate capacity deficit.
SY 2016-17	1,967	2,053	104%	Approaching/slight capacity deficit.
SY 2017-18	1,983	2,167	109%	
SY 2018-19	1,982	2,255	114%	Moderate capacity deficit.
SY 2019-20	1,992	2,350	118%	Substantial capacity deficit.

Sources: FCPS, Certified Membership, September 2009 to September 2019; FCPS, Adopted Capital Improvement Programs (CIPs), Fiscal Year (FY) 2011-15 to FY 2020-24.
 Note: Temporary classrooms added space for students, but are not counted toward program capacity.

FCPS has implemented the following capacity solutions at McLean HS:

- **SY 2012-13:** Added four temporary classrooms
- **SY 2013-14:** Added four temporary classrooms
- **SY 2018-19:** Added four temporary classrooms
Weight Room Expanded
- **SY 2019-20:** Added four temporary classrooms
Removed lockers due to hallway crowding
- **SY 2020-21:** Converted two classrooms to Bio/Chem Labs
Twelve (12) classroom modular installed

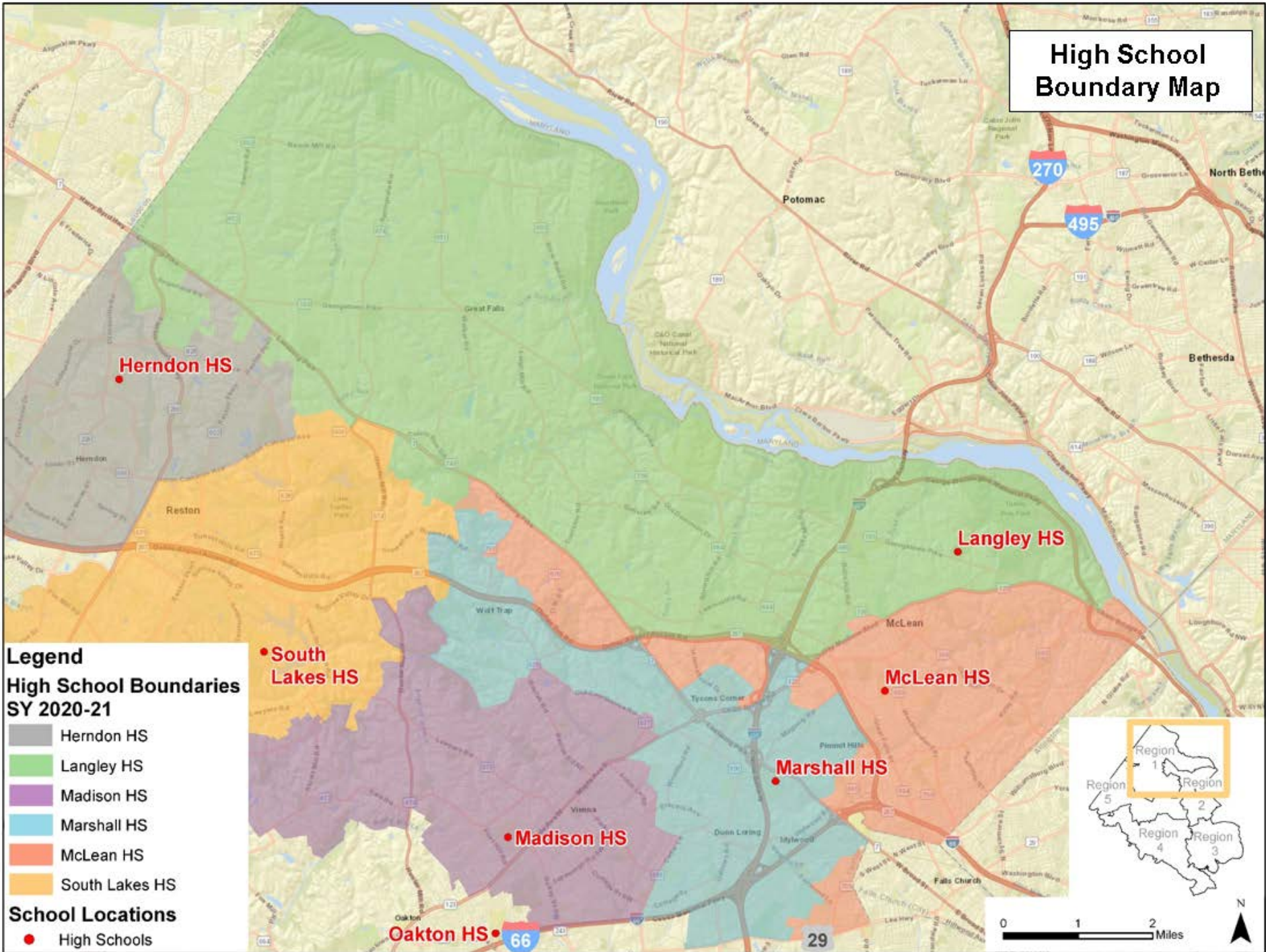
The modular will replace 12 temporary classrooms and increase the program capacity at McLean HS from 1,992 to 2,343.

Table 3: Modified FY 2021-25 Capital Improvement Program (CIP) Reflecting Modular

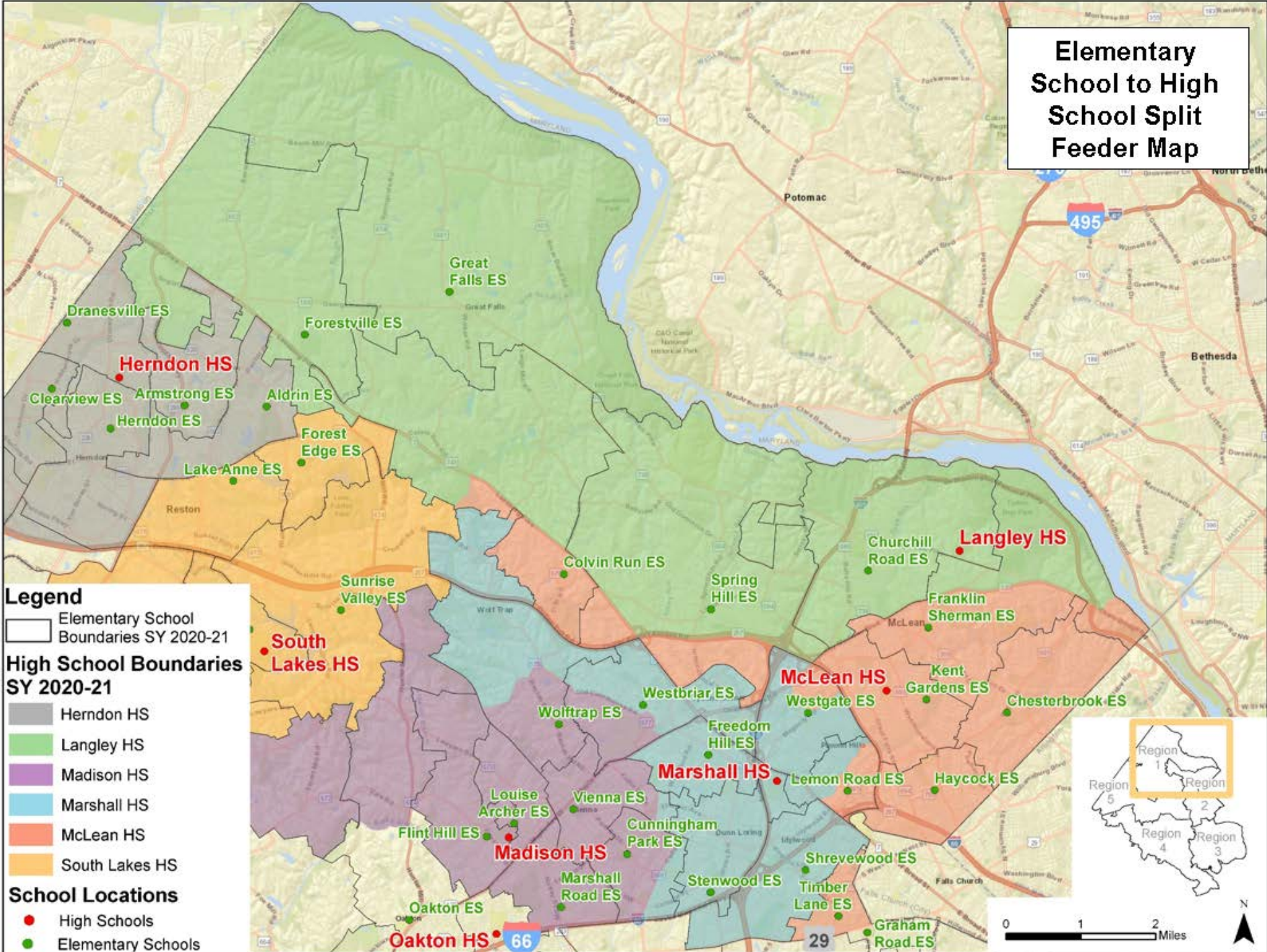
Facility		SY 2019-20					Projected Membership					Projected Program Capacity Utilization				
School	Design / Future Design Capacity	Program Capacity	Membership	Program Capacity Utilization %	Temporary Class-rooms	Modular Class-rooms	SY20-21	SY21-22	SY22-23	SY23-24	SY24-25	SY20-21	SY21-22	SY22-23	SY23-24	SY24-25
McLean HS ¹	2,343	2,343	2,350	100%	6	12	2,409	2,428	2,403	2,540	2,425	103%	104%	103%	108%	103%

Projections Source: FCPS, *FY 2021-25 Capital Improvement Program*, January 2020.
¹McLean HS design and program capacity modified to reflect the addition of a modular.

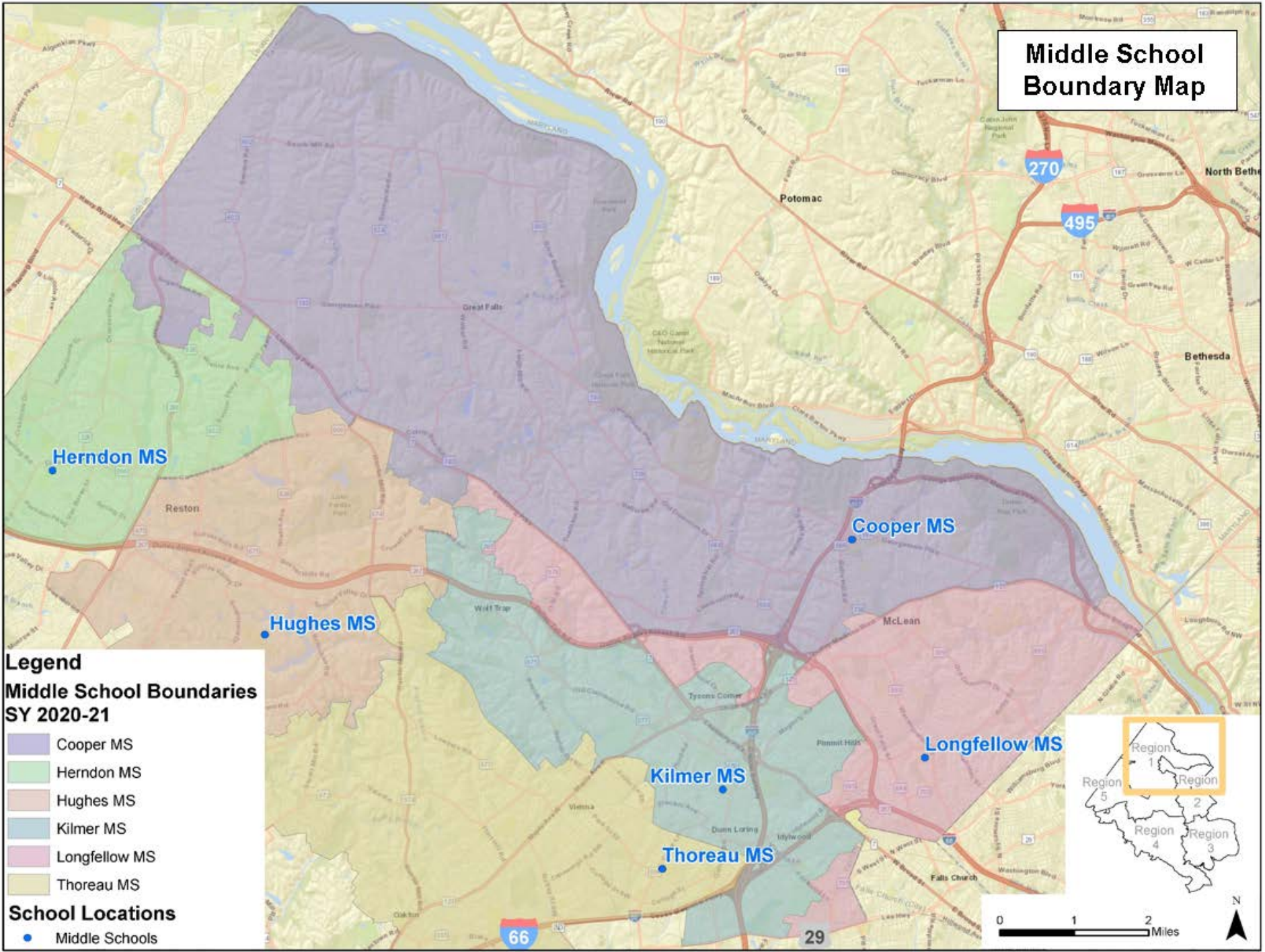
High School Boundary Map



Elementary School to High School Split Feeder Map



Middle School Boundary Map



Legend

Middle School Boundaries SY 2020-21

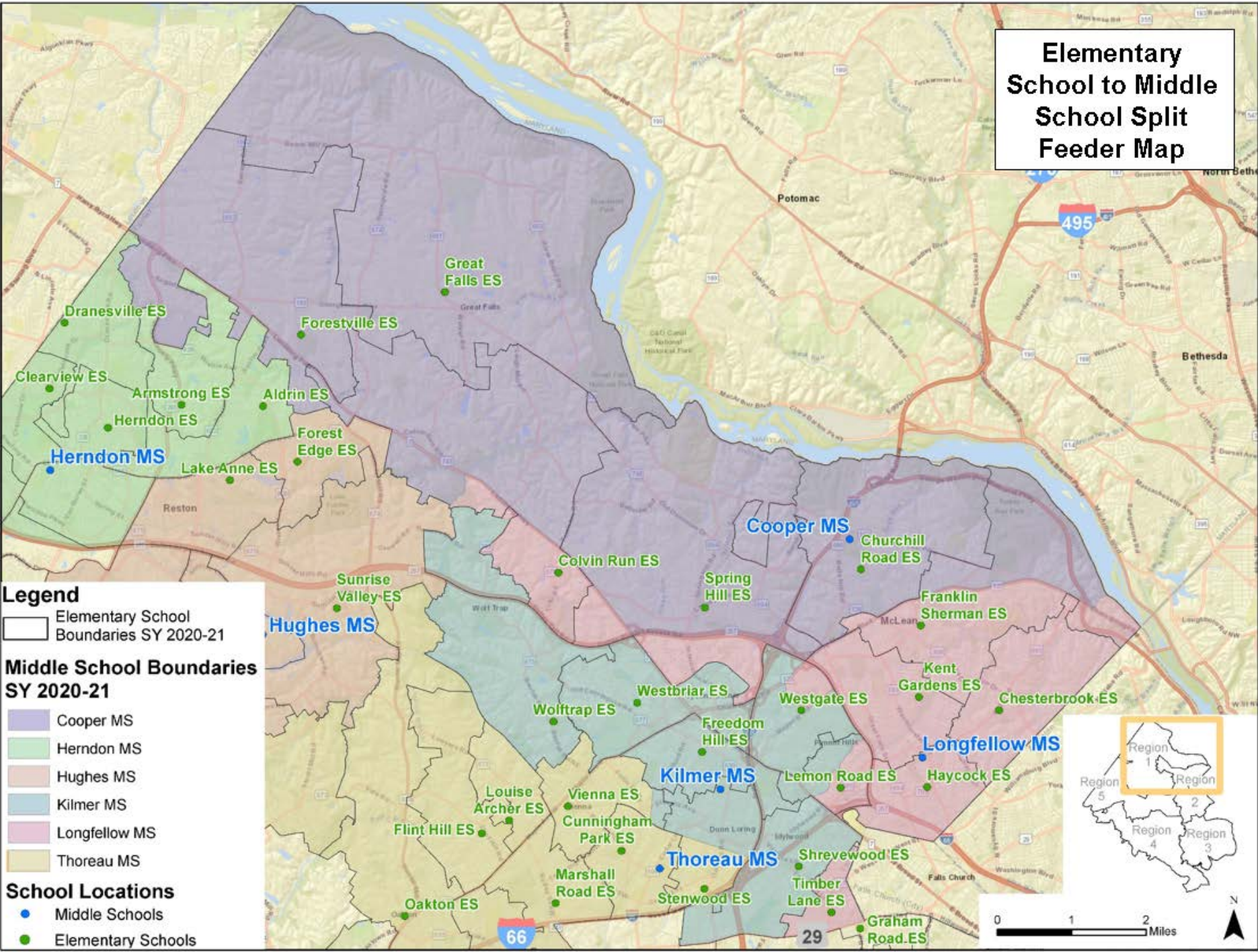
- Cooper MS
- Herndon MS
- Hughes MS
- Kilmer MS
- Longfellow MS
- Thoreau MS

School Locations

- Middle Schools



Elementary School to Middle School Split Feeder Map



Definitions:

The following terms and their definitions have been included in this report for convenience.

School Boundary Terms:

Attendance Island: A geographic area assigned to a particular school's boundary that does not share any adjacencies with the rest of the school's boundary.

Split Feeder: A school from which students progress to more than one higher-level school. For example, an elementary school that sends students to two separate middle schools as part of the school's boundary.

Facility Use Terms:

Program Capacity: Capacity based on the number of existing core classrooms and the specific unique programs assigned to a school that differs from the original design of the building. Program capacity is recalculated every school year based on the program changes.

Program Utilization: Percentage of program capacity that is utilized by the total student membership within a school.

Design Capacity: Capacity based on the number of students a building can support per the original design of the building. The design capacity remains constant until a school undergoes a renovation or addition.

Capacity Deficit: Term used when referring to a school with a greater membership than its program capacity.

Capacity Surplus: Term used when referring to a school with a membership less than 85 percent of its program capacity.

Capital Enhancement Terms:

Modular Classrooms: Prefabricated buildings that are constructed off site in a factory and transported to school grounds to provide additional classroom space to accommodate students. They are portable, can be relocated, and typically are ready for use 30-60 percent faster than on-site built construction. Modularity sit on a permanent foundation. They have plumbing, interior corridors, and bathroom facilities. Modular additions are included in the calculation of school design and program capacity.

Renovation: Renovations are aimed at ensuring that all schools provide the facilities necessary to support current educational programs regardless of the age of the buildings. Renovations are also used to restore capacity lost due to low-ratio special program instruction and other new instructional support needs (e.g., technology labs). Depending on need, a renovated school may acquire a new heating plant, air conditioning, upgraded electrical and plumbing systems, and spaces required to support the educational program. Renovations are performed on a facility in order to replace all building subsystems which have outlived their useful life, as well as, alter, modernize, expand, or remodel the existing space. Renovations also may improve or modernize the operations and functions of the facility and bring the facility up to current code standards. Renovations are typically financed through municipal bonds.

Options for Consideration

Feedback from the December 2019 community meetings includes changes to high schools, other than McLean or Langley high schools, as well as addressing the split feeders across all school levels. Table 4 shows middle and high schools that were in the feedback, as shown in the FY2021-25 CIP and modified to show the renovation for Cooper MS and the addition of the modular at McLean HS have been included in the data below for planning purposes.

Four (4) options are available for consideration and feedback. Additional evaluation and considerations of other areas and middle and high schools identified in the community feedback also shown in this report in the Additional Information Section on page 21 of this report for review.

It is important to note that enrollment estimates in options do not show phasing (commonly referred to as grandfathering) to show the full impact to the facility. Phasing will be implemented “through attrition” consistent with Policy 8130.7. No current students attending Longfellow/Cooper or McLean/Langley will be reassigned.

Additional considerations regarding numbers shown within this report:

- Student adjustments shown are estimates using SY 2019-20 numbers and will vary with implementation.
- Adjustment numbers are on best available information and do not reflect transfers and/or instructional choices made by students, parents, and/or caregivers.
- Any option chosen would delay capacity relief until phasing is complete and the change is fully implemented.
- Phasing of an adjustment would allow schools to adjust space use each year until phasing of the change is complete.

Table 4: SY 2019-20 Capacity, Membership, and Projections

Facility		SY 2019-20					Projected Membership					Projected Program Capacity Utilization				
School	Design / Future Design Capacity	Program Capacity	Membership	Program Capacity Utilization %	Temporary Class-rooms	Modular Class-rooms	SY20-21	SY21-22	SY22-23	SY23-24	SY24-25	SY20-21	SY21-22	SY22-23	SY23-24	SY24-25
Falls Church HS	1,962	1,961	2,034	104%	8	-	2,174	2,135	2,180	2,302	2,311	111%	109%	111%	117%	118%
Herndon HS	2,146 / 2,500	2,145	2,346	109%	26	-	2,334	2,420	2,464	2,509	2,585	93%	97%	99%	100%	103%
Langley HS	2,370	2,370	1,972	83%	-	-	2,016	1,991	1,986	1,931	1,855	85%	84%	84%	81%	78%
Madison HS	2,115 / 2,500	2,113	2,272	108%	3	-	2,314	2,337	2,319	2,328	2,301	109%	111%	110%	93%	92%
Marshall HS	2,334	2,333	2,134	91%	-	12	2,135	2,080	2,121	2,156	2,248	92%	89%	91%	92%	96%
McLean HS ¹	2,343	2,343	2,350	100%	6	12	2,409	2,428	2,403	2,540	2,425	103%	104%	103%	108%	103%
South Lakes HS	2,717	2,542	2,492	98%	2	-	2,557	2,560	2,610	2,577	2,522	101%	101%	103%	101%	99%
Cooper MS ²	1,080 / 1,120	1,120	992	89%	4	-	951	958	976	975	980	85%	86%	87%	87%	88%
Herndon MS	1,176	1,169	1,131	97%	6	-	1,163	1,173	1,110	1,073	1,086	100%	100%	95%	92%	93%
Hughes MS	1,114 / 1,250	1,106	1,056	96%	8	-	1,066	1,050	998	1,003	1,011	96%	84%	80%	80%	81%
Jackson MS	1,314	1,231	1,038	84%	6	-	1,088	1,127	1,102	1,012	1,026	88%	92%	90%	82%	83%
Kilmer MS	1,152	1,146	1,146	100%	14	-	1,169	1,181	1,225	1,247	1,234	102%	103%	107%	109%	108%
Longfellow MS	1,374	1,374	1,334	97%	2	-	1,420	1,423	1,405	1,441	1,390	103%	104%	102%	105%	101%
Thoreau MS	1,395	1,392	1,319	95%	-	-	1,339	1,319	1,304	1,255	1,244	96%	95%	94%	90%	89%

Source: FCPS, FY 2021-25 Capital Improvement Program, January 2020.

¹McLean HS design and program capacity reflect the addition of a modular. Construction estimated to complete in December 2020.

²Cooper MS design and program capacity reflect the renovation. Construction began in fall 2020.

Notes:

1. Numbers highlighted in yellow are future design capacity and project capacity utilization percentages after a renovation or capacity enhancement.

Option A

- Considers reassigning students from McLean HS to Langley HS and from Longfellow MS to Cooper MS in the Colvin Run ES split feeder area and a portion of Westbriar ES
- Eliminates the Colvin Run ES split feeder
- Enrollment estimates do not show phasing/grandfathering in Table 5 below
 - Student adjustments shown are estimates using SY 2019-20 numbers and will vary
 - Phasing will be implemented “through attrition” consistent with Policy 8130.7
 - No current students attending Longfellow/Cooper or McLean/Langley will be reassigned

Table 5: Option A Data

Facility		SY 2019-20					Student Adjustment (SY 19-20 numbers)				Projected Membership					Projected Program Capacity Utilization				
School	Design Capacity	Program Capacity	Member-ship	Program Capacity Utilization	Temporary Class-rooms	Modular Class-rooms	In	Out	Net	Total	SY20-21	SY21-22	SY22-23	SY23-24	SY24-25	SY20-21	SY21-22	SY22-23	SY23-24	SY24-25
McLean HS ¹	2,343	2,343	2,350	100%	6	12	-	-	-	-	2,409	2,428	2,403	2,540	2,425	103%	104%	103%	108%	103%
Langley HS	2,370	2,370	1,972	83%	-	-	-	-	-	-	2,016	1,991	1,986	1,931	1,855	85%	84%	84%	81%	78%
Longfellow MS	1,374	1,374	1,334	97%	2	-	-	-	-	-	1,420	1,423	1,405	1,441	1,390	103%	104%	102%	105%	101%
Cooper MS ²	1,080 / 1,120	1,120	992	89%	4	-	-	-	-	-	951	958	976	975	980	85%	86%	87%	87%	88%
ADJUSTED McLean HS ¹	2,343	2,343	2,219	95%	6	12	-	-131	-131	2,219	2,277	2,299	2,270	2,412	2,287	97%	98%	97%	103%	98%
ADJUSTED Langley HS	2,370	2,370	2,103	89%	-	-	+131	-	+131	2,103	2,148	2,120	2,119	2,059	1,993	91%	89%	89%	87%	84%
ADJUSTED Longfellow MS	1,374	1,374	1,281	93%	2	-	-	-53	-53	1,281	1,356	1,346	1,329	1,371	1,322	99%	98%	97%	100%	96%
ADJUSTED Cooper MS ²	1,120	1,120	1,045	93%	4	-	+53	-	+53	1,045	1,015	1,035	1,052	1,045	1,048	91%	92%	94%	93%	94%

¹McLean HS design and program capacity reflect the addition of a modular. Construction estimated to complete in December 2020.

²Cooper MS design and program capacity reflect the renovation. Construction began in fall 2020.

Sources:

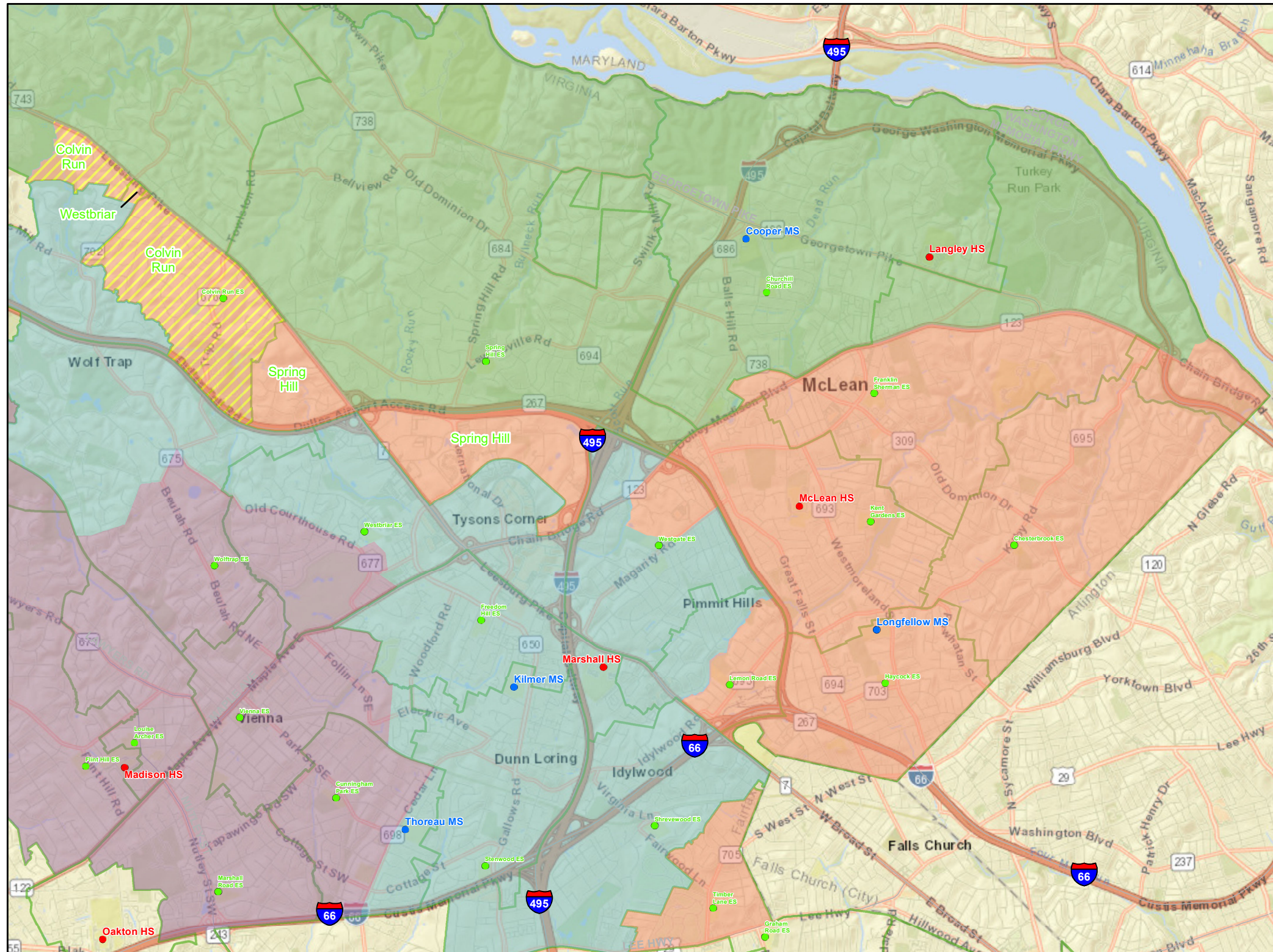
1. FCPS, *FY 2021-25 Capital Improvement Program*, January 2020.
2. FCPS Facilities Planning Services, *SY 2019-20 Modified Capacity, Membership, and Projections*.

Notes:

1. Numbers highlighted in yellow are future design capacity after a renovation.
2. Student adjustment considers all residing students and do not factor in transfers to other schools.
3. Student adjustment includes special education students.
4. Student adjustment numbers do not include postgraduate students.

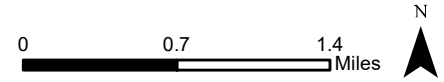
Option A

Colvin Run ES Split Feeder and portion of Westbriar ES Map



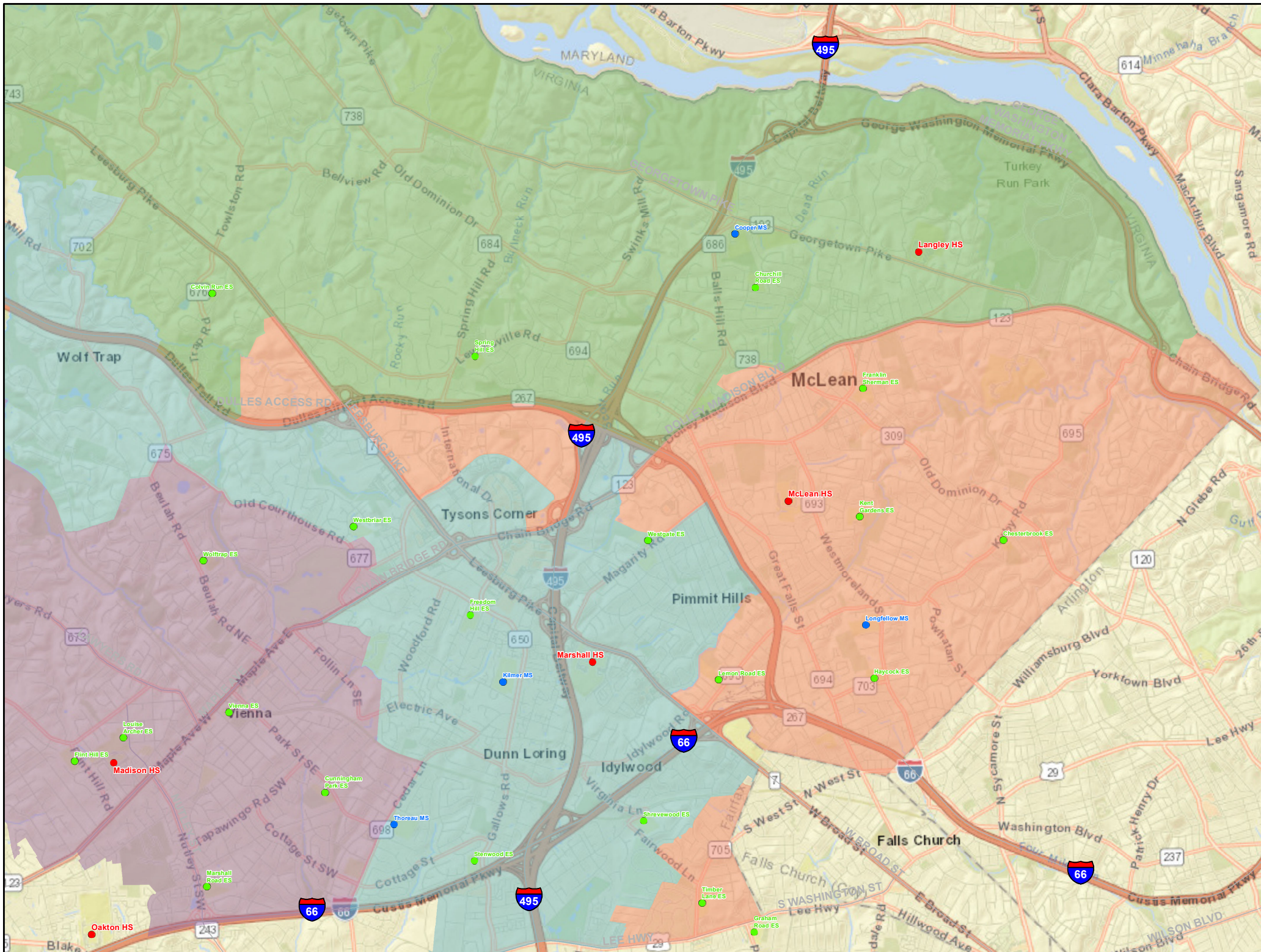
Legend

- Area Reassigned
- High School Boundaries**
- Langley HS
- Madison HS
- Marshall HS
- McLean HS
- Elementary School
- Middle School
- High School
- Administrative Buildings and Centers



Option A

Colvin Run ES Split Feeder and portion of Westbriar ES Simple Boundaries Map

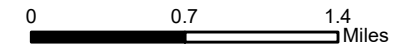


Legend

High School Boundaries

- Adjusted Langley HS
- Madison HS
- Marshall HS
- Adjusted McLean HS

- Elementary School
- Middle School
- High School
- Administrative Buildings and Centers



Option B

- Considers reassigning students from McLean HS to Langley HS and from Longfellow MS to Cooper MS in the Colvin Run ES split feeder area, a portion of the Spring Hill ES split feeder area, and a portion of Westbriar ES
- Eliminates the Colvin Run ES split feeder
- Increases efficiency for transportation
- Enrollment estimates do not show phasing/grandfathering in Table 6 below
 - Student adjustments shown are estimates using SY 2019-20 numbers and will vary
 - Phasing will be implemented “through attrition” consistent with Policy 8130.7
 - No current students attending Longfellow/Cooper or McLean/Langley will be reassigned

Table 6: Option B Data

Facility		SY 2019-20					Student Adjustment (SY 19-20 numbers)				Projected Membership					Projected Program Capacity Utilization				
School	Design Capacity	Program Capacity	Member-ship	Program Capacity Utilization	Temporary Class-rooms	Modular Class-rooms	In	Out	Net	Total	SY20-21	SY21-22	SY22-23	SY23-24	SY24-25	SY20-21	SY21-22	SY22-23	SY23-24	SY24-25
McLean HS ¹	2,343	2,343	2,350	100%	6	12	-	-	-	-	2,409	2,428	2,403	2,540	2,425	103%	104%	103%	108%	103%
Langley HS	2,370	2,370	1,972	83%	-	-	-	-	-	-	2,016	1,991	1,986	1,931	1,855	85%	84%	84%	81%	78%
Longfellow MS	1,374	1,374	1,334	97%	2	-	-	-	-	-	1,420	1,423	1,405	1,441	1,390	103%	104%	102%	105%	101%
Cooper MS ²	1,080 / 1,120	1,120	992	89%	4	-	-	-	-	-	951	958	976	975	980	85%	86%	87%	87%	88%
ADJUSTED McLean HS ¹	2,343	2,343	2,160	92%	6	12	-	-190	-190	2,160	2,215	2,242	2,207	2,345	2,213	95%	96%	94%	100%	94%
ADJUSTED Langley HS	2,370	2,370	2,162	91%	-	-	+190	-	+190	2,162	2,210	2,177	2,182	2,126	2,067	93%	92%	92%	90%	87%
ADJUSTED Longfellow MS	1,374	1,374	1,256	91%	2	-	-	-78	-78	1,256	1,325	1,311	1,293	1,331	1,292	96%	95%	94%	97%	94%
ADJUSTED Cooper MS ²	1,120	1,120	1,070	96%	4	-	+78	-	+78	1,070	1,046	1,070	1,088	1,085	1,078	93%	96%	97%	97%	96%

¹McLean HS design and program capacity reflect the addition of a modular. Construction estimated to complete in December 2020.

²Cooper MS design and program capacity reflect the renovation. Construction began in fall 2020.

Sources:

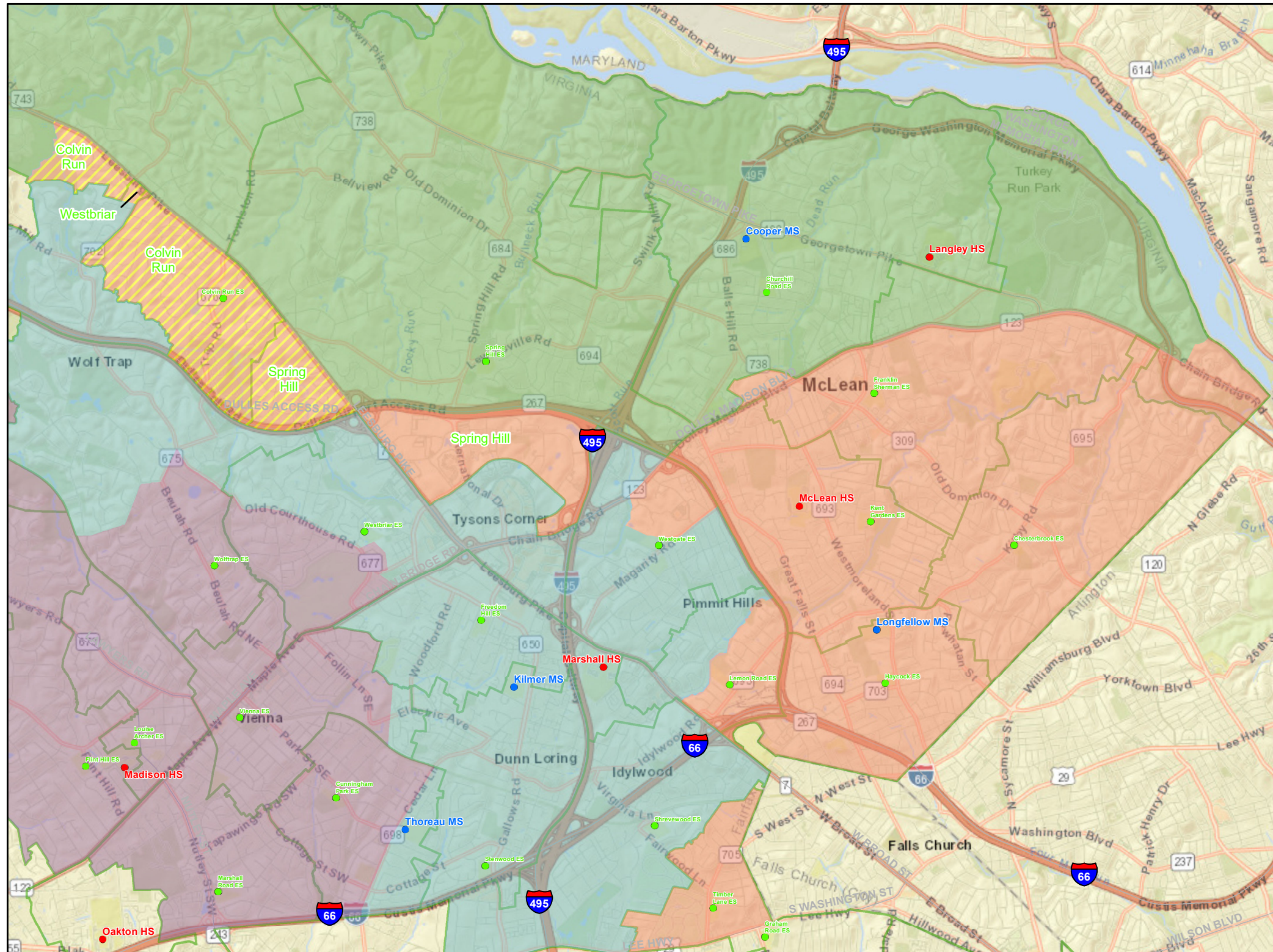
1. FCPS, *FY 2021-25 Capital Improvement Program*, January 2020.
2. FCPS Facilities Planning Services, *SY 2019-20 Modified Capacity, Membership, and Projections*.

Notes:

1. Numbers highlighted in yellow are future design capacity after a renovation.
2. Student adjustment considers all residing students and do not factor in transfers to other schools.
3. Student adjustment includes special education students.
4. Student adjustment numbers do not include postgraduate students.

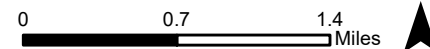
Option B

Colvin Run ES Split Feeder, portion of Spring Hill ES Split Feeder, and portion of Westbriar ES Map



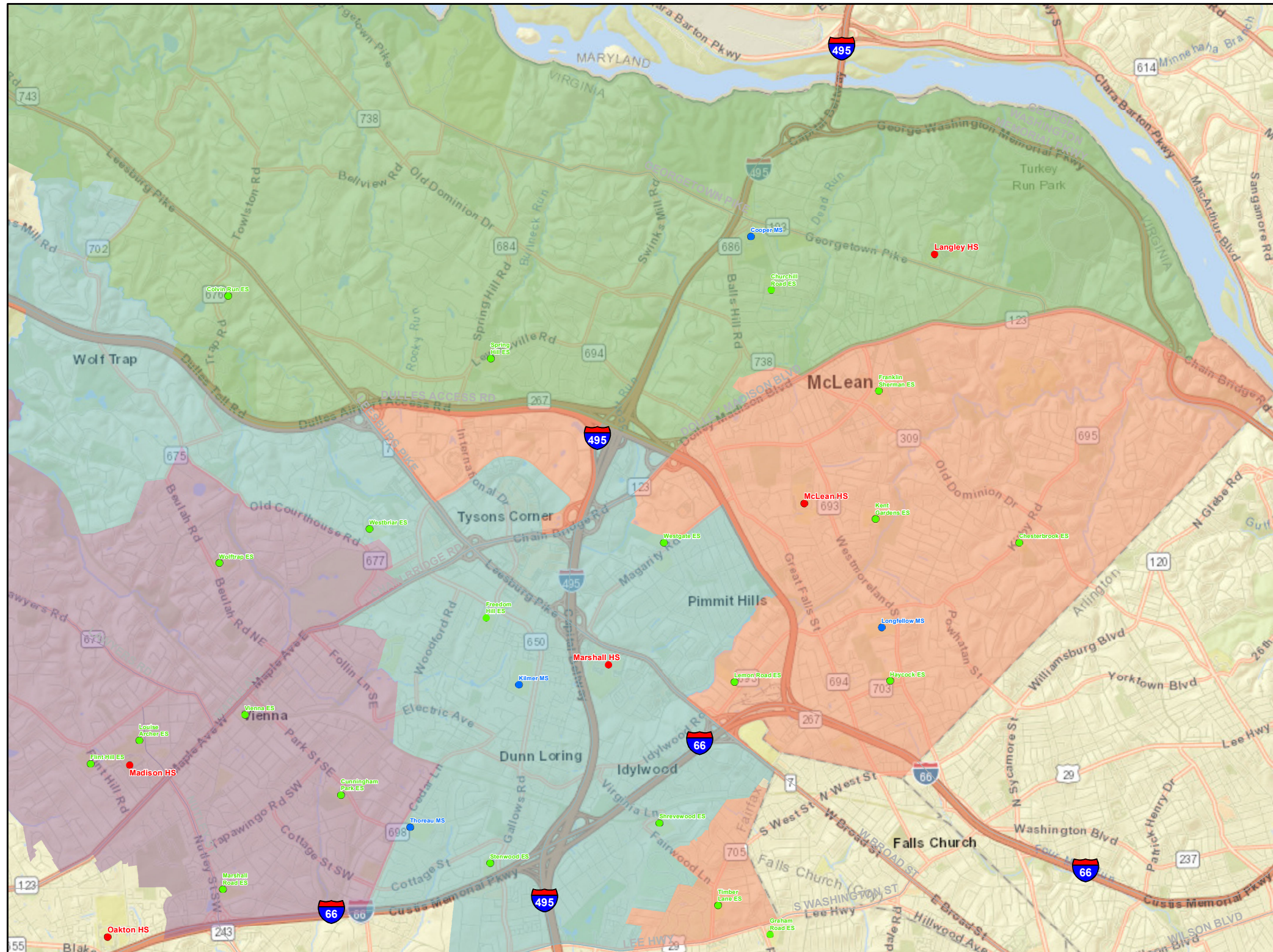
Legend

- Area Reassigned
- High School Boundaries**
 - Langley HS
 - Madison HS
 - Marshall HS
 - McLean HS
- Elementary School
- Middle School
- High School
- Administrative Buildings and Centers



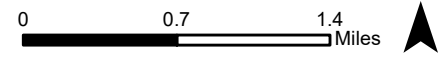
Option B

Colvin Run ES Split Feeder, portion of Spring Hill ES Split Feeder, and portion of Westbriar ES Simple Boundaries Map



Legend

- High School Boundaries**
- Adjusted Langley HS
- Madison HS
- Marshall HS
- Adjusted McLean HS
- Elementary School
- Middle School
- High School
- Administrative Buildings and Centers



Option C

- Considers reassigning students from McLean HS to Langley HS and from Longfellow MS to Cooper MS in the Spring Hill ES split feeder area
- Eliminates the Spring Hill ES split feeder
- Enrollment estimates do not show phasing/grandfathering in Table 7 below
 - Student adjustments shown are estimates using SY 2019-20 numbers and will vary
 - Phasing will be implemented “through attrition” consistent with Policy 8130.7.
 - No current students attending Longfellow/Cooper or McLean/Langley will be reassigned

Table 7: Option C Data

Facility		SY 2019-20					Student Adjustment (SY 19-20 numbers)				Projected Membership					Projected Program Capacity Utilization				
School	Design Capacity	Program Capacity	Member-ship	Program Capacity Utilization	Temporary Class-rooms	Modular Class-rooms	In	Out	Net	Total	SY20-21	SY21-22	SY22-23	SY23-24	SY24-25	SY20-21	SY21-22	SY22-23	SY23-24	SY24-25
McLean HS ¹	2,343	2,343	2,350	100%	6	12	-	-	-	-	2,409	2,428	2,403	2,540	2,425	103%	104%	103%	108%	103%
Langley HS	2,370	2,370	1,972	83%	-	-	-	-	-	-	2,016	1,991	1,986	1,931	1,855	85%	84%	84%	81%	78%
Longfellow MS	1,374	1,374	1,334	97%	2	-	-	-	-	-	1,420	1,423	1,405	1,441	1,390	103%	104%	102%	105%	101%
Cooper MS ²	1,080 / 1,120	1,120	992	89%	4	-	-	-	-	-	951	958	976	975	980	85%	86%	87%	87%	88%
ADJUSTED McLean HS ¹	2,343	2,343	2,110	90%	6	12	-	-240	-240	2,110	2,140	2,157	2,093	2,203	2,075	91%	92%	89%	94%	89%
ADJUSTED Langley HS	2,370	2,370	2,212	93%	-	-	+240	-	+240	2,212	2,285	2,262	2,296	2,268	2,205	96%	95%	97%	96%	93%
ADJUSTED Longfellow MS	1,374	1,374	1,221	89%	2	-	-	-113	-113	1,221	1,299	1,281	1,258	1,290	1,260	95%	93%	92%	94%	92%
ADJUSTED Cooper MS ²	1,120	1,120	1,105	99%	4	-	+113	-	+113	1,105	1,072	1,100	1,123	1,126	1,110	96%	98%	100%	101%	99%

¹McLean HS design and program capacity reflect the addition of a modular. Construction estimated to complete in December 2020.

²Cooper MS design and program capacity reflect the renovation. Construction began in fall 2020.

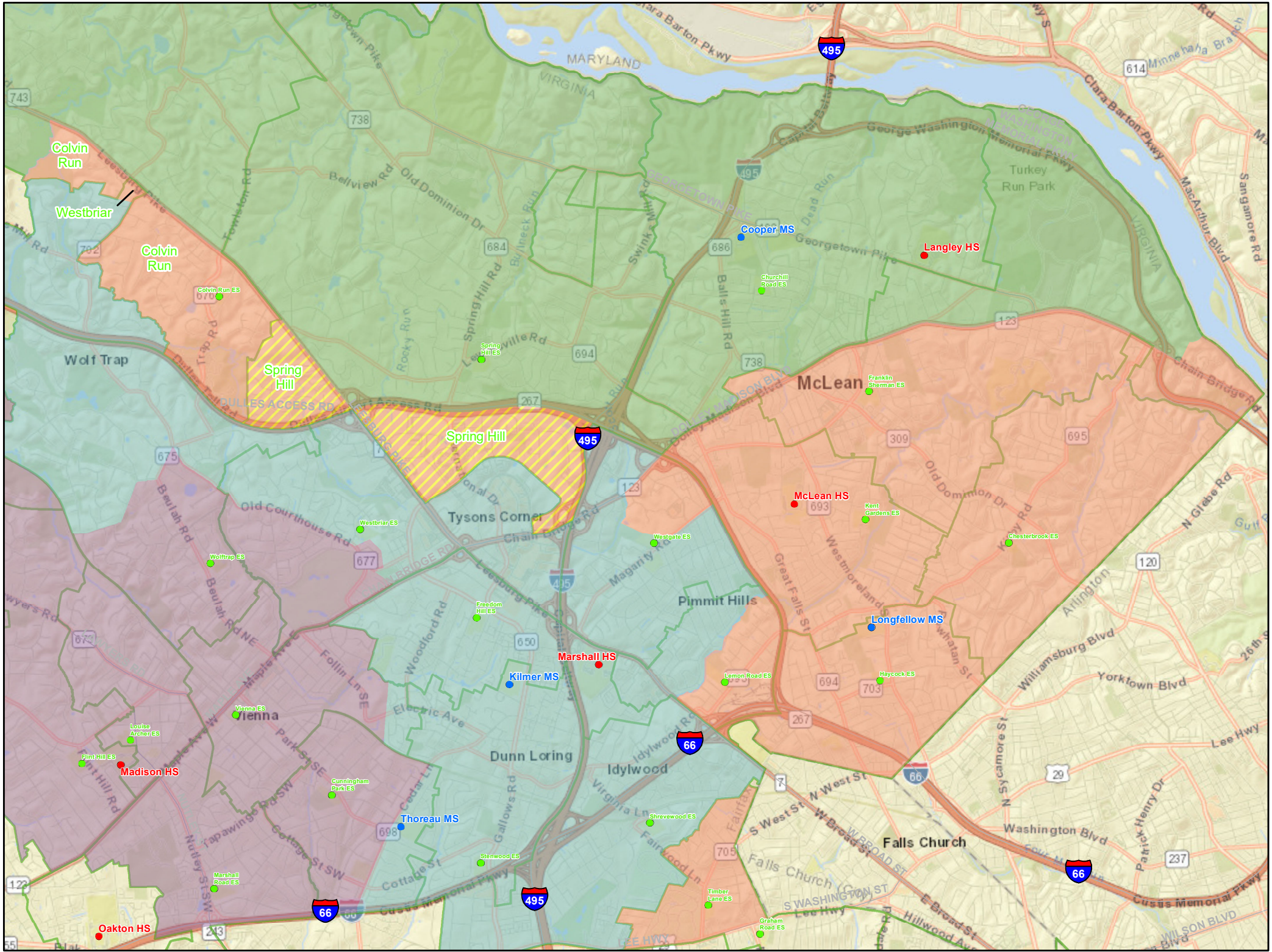
Sources:

1. FCPS, *FY 2021-25 Capital Improvement Program*, January 2020.
2. FCPS Facilities Planning Services, *SY 2019-20 Modified Capacity, Membership, and Projections*.

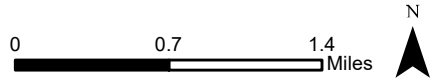
Notes:

1. Numbers highlighted in yellow are future design capacity after a renovation.
2. Student adjustment considers all residing students and do not factor in transfers to other schools.
3. Student adjustment includes special education students.
4. Student adjustment numbers do not include postgraduate students.

Option C
Spring Hill ES
Split Feeder
Map

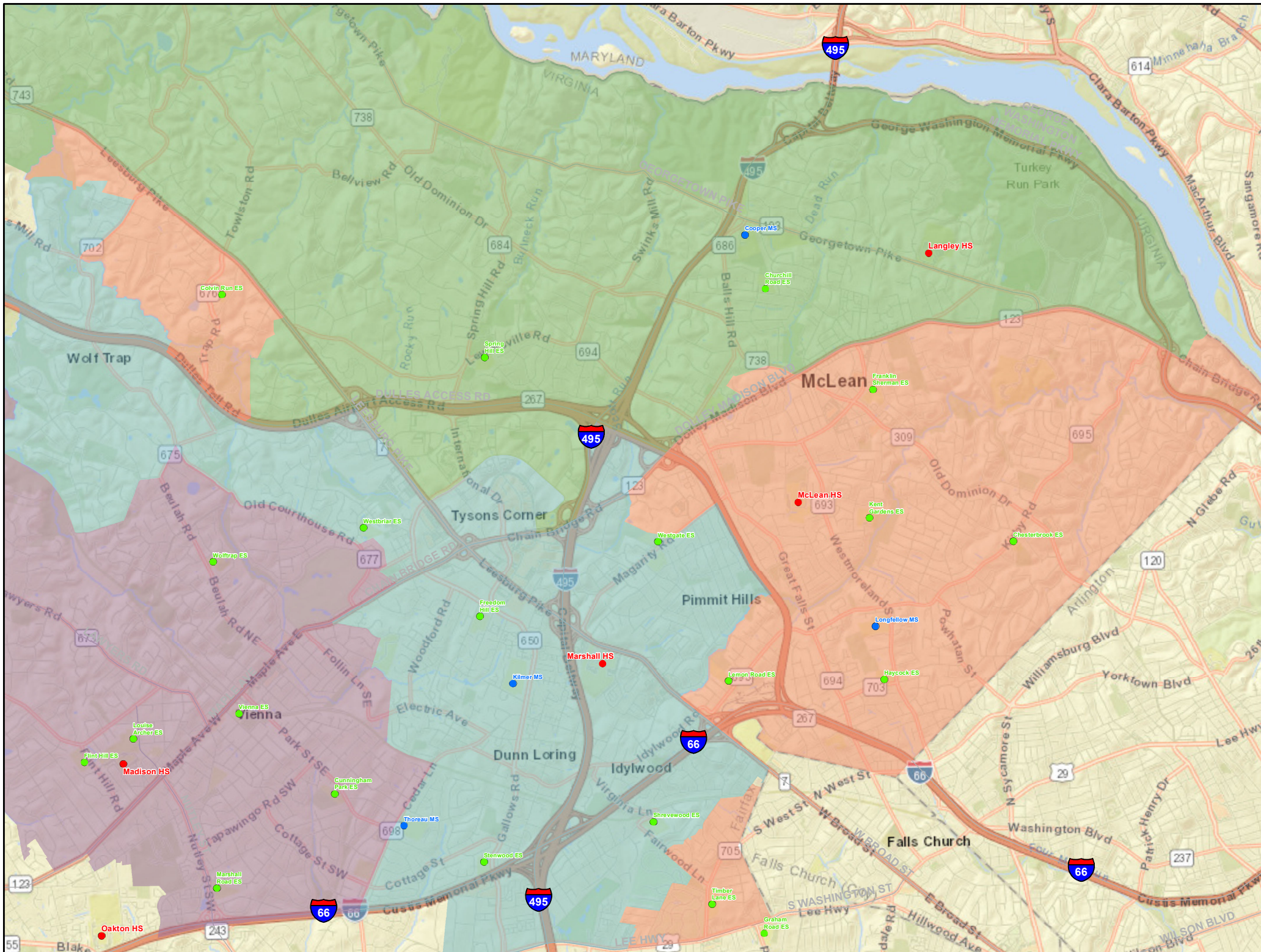


- Legend**
- Area Reassigned
 - High School Boundaries**
 - Langley HS
 - Madison HS
 - Marshall HS
 - McLean HS
 - Elementary School
 - Middle School
 - High School
 - Administrative Buildings and Centers

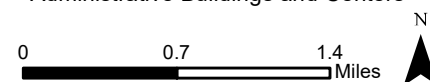


Option C

**Spring Hill ES
Split Feeder
Simple Boundaries Map**



- Legend**
- High School Boundaries**
- Adjusted Langley HS
 - Madison HS
 - Marshall HS
 - Adjusted McLean HS
- Elementary School
 - Middle School
 - High School
 - Administrative Buildings and Centers



No Change Option

- Does not considers reassigning students from McLean HS to Langley HS or from Longfellow MS to Cooper MS
- Student projections shown are estimates as shown in FCPS Fiscal Year (FY) 2021-25 Capital Improvement Program (CIP) with the program capacity modified to reflect the modular at McLean HS and the renovation at Cooper MS

Table 8: No Change Option

Facility		SY 2019-20					Student Adjustment (SY 19-20 numbers)				Projected Membership					Projected Program Capacity Utilization				
School	Design Capacity	Program Capacity	Member-ship	Program Capacity Utilization	Temporary Class-rooms	Modular Class-rooms	In	Out	Net	Total	SY20-21	SY21-22	SY22-23	SY23-24	SY24-25	SY20-21	SY21-22	SY22-23	SY23-24	SY24-25
McLean HS ¹	2,343	2,343	2,350	100%	6	12	-	-	-	-	2,409	2,428	2,403	2,540	2,425	103%	104%	103%	108%	103%
Langley HS	2,370	2,370	1,972	83%	-	-	-	-	-	-	2,016	1,991	1,986	1,931	1,855	85%	84%	84%	81%	78%
Longfellow MS	1,374	1,374	1,334	97%	2	-	-	-	-	-	1,420	1,423	1,405	1,441	1,390	103%	104%	102%	105%	101%
Cooper MS ²	1,080 / 1,120	1,120	992	89%	4	-	-	-	-	-	951	958	976	975	980	85%	86%	87%	87%	88%

¹McLean HS design and program capacity reflect the addition of a modular. Construction estimated to complete in December 2020.

²Cooper MS design and program capacity reflect the renovation. Construction began in fall 2020.

Sources:

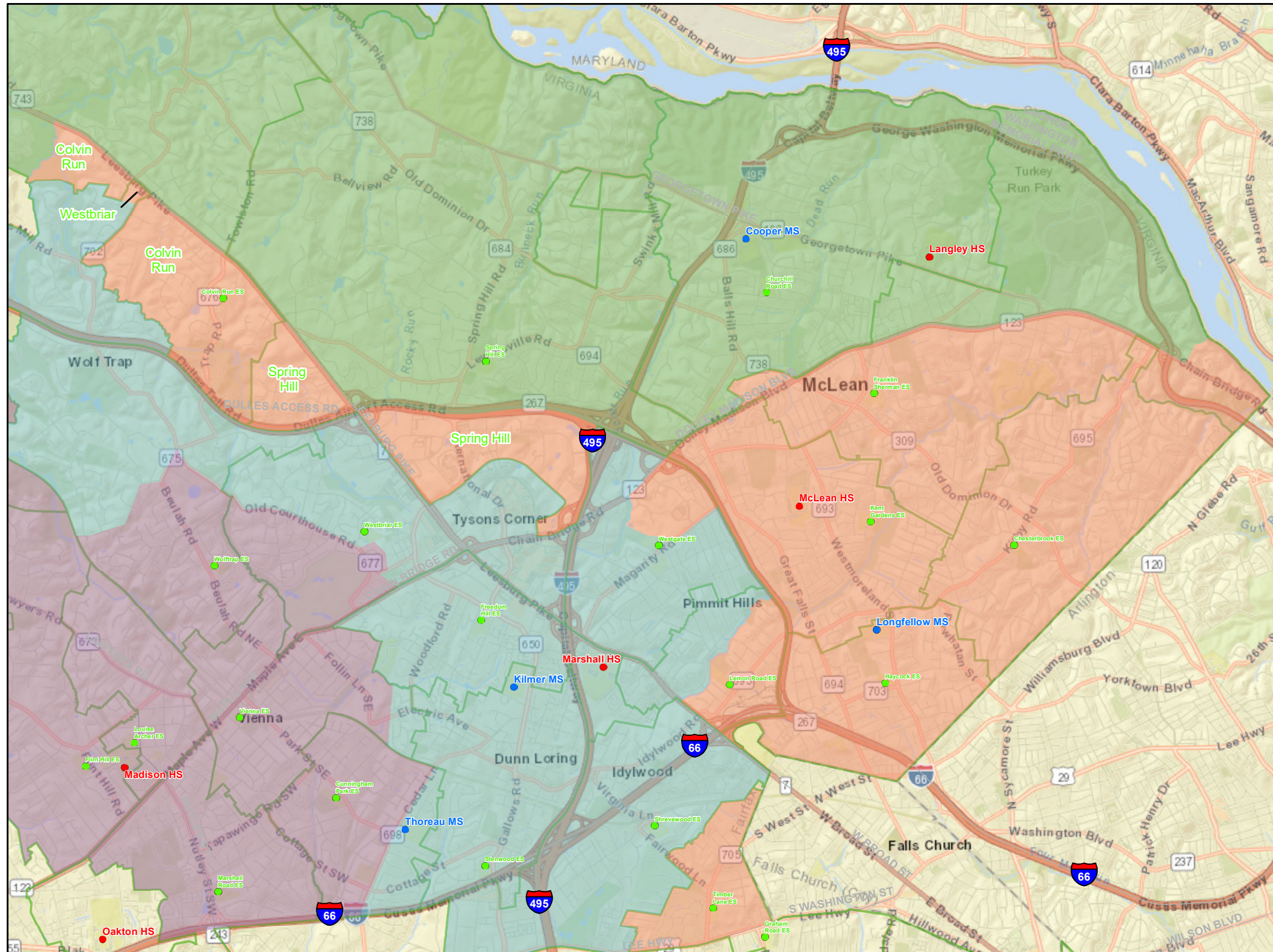
1. FCPS, *FY 2021-25 Capital Improvement Program*, January 2020.
2. FCPS Facilities Planning Services, *SY 2019-20 Modified Capacity, Membership, and Projections*.

Notes:

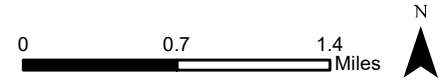
1. Numbers highlighted in yellow are future design capacity after a renovation.

No Change Option

No Change to
McLean HS or
Langley HS
Map



- Legend**
- High School Boundaries**
- Langley HS
 - Madison HS
 - Marshall HS
 - McLean HS
- Elementary School
- Middle School
- High School
- Administrative Buildings and Centers



Phasing (commonly referred to as Grandfathering)

Policy 8130.7, *Local School Boundaries, Program Assignments, and School Closings*, addresses phasing (also commonly referred to as grandfathering) in Section XI:

“XI. PHASING OF ADJUSTMENTS

When possible, adjustments under this policy shall be implemented through attrition and phasing. The School Board may approve a grade-by-grade phase-in of adjustments for students beginning with the incoming class at the middle or high school levels, when feasible. The School Board may adopt other phasing plans as appropriate to the individual boundary study.

Parents of rising sixth (or fifth) graders, eighth graders, and twelfth graders affected by a boundary change may, at the discretion of the School Board, be provided the option of having their students remain in the school they attended prior to the change.”

The School Board will decide any other phasing plan when considering action to change any school boundary.

Phasing will be implemented “through attrition” consistent with Policy 8130.7. An example of phasing through attrition is as follows:

Table 9: Example of Phasing Through Attrition

Year 1	7 th	8 th	9 th	10 th	11 th	12 th	
Year 2	7 th	8 th	9 th	10 th	11 th	12 th	
Year 3			9 th	10 th	11 th	12 th	
Year 4			9 th	10 th	11 th	12 th	

No current students attending Longfellow/Cooper or McLean/Langley will be reassigned.

Additional considerations regarding numbers shown in options within this report:

- Student adjustments shown are estimates using SY 2019-20 numbers and will vary with implementation.
- Adjustment numbers are on best available information and do not reflect transfers and/or instructional choices made by students, parents, and/or caregivers.
- Any option chosen would delay capacity relief until phasing is complete and the change is fully implemented.
- Phasing of an adjustment would allow schools to adjust space use each year until phasing of the change is complete.

Additional Information

Other Considered Areas

The following additional information is provided based on community feedback, such as considering the areas assigned to Franklin Sherman ES or Chesterbrook ES, or including other middle and high schools. These were eliminated for further consideration because they created a new capacity deficit at a school involved.

It is important to note that enrollment estimates in the additional information does not show phasing (commonly referred to as grandfathering) to show the full impact to the facility.

Additional considerations regarding numbers shown in additional information within this report:

- Student adjustments shown are estimates using SY 2019-20 numbers and will vary with implementation.
- Adjustment numbers are on best available information and do not reflect transfers and/or instructional choices made by students, parents, and/or caregivers.
- Any option chosen would delay capacity relief until phasing is complete and the change is fully implemented.
- Phasing of an adjustment would allow schools to adjust space use each year until phasing of the change is complete.

**Additional Information – Other Areas Considered
Franklin Sherman ES**

- Based on community feedback, reassigning Franklin Sherman ES was evaluated and is shown in Table 10
- Eliminates the Franklin Sherman ES split feeder
- Creates slight capacity deficit at Cooper MS

Table 10: Considering Franklin Sherman ES

Facility		SY 2019-20					Student Adjustment (SY 19-20 numbers)				Projected Membership					Projected Program Capacity Utilization				
School	Design Capacity	Program Capacity	Member-ship	Program Capacity Utilization	Temporary Class-rooms	Modular Class-rooms	In	Out	Net	Total	SY20-21	SY21-22	SY22-23	SY23-24	SY24-25	SY20-21	SY21-22	SY22-23	SY23-24	SY24-25
McLean HS ¹	2,343	2,343	2,350	100%	6	12	-	-	-	-	2,409	2,428	2,403	2,540	2,425	103%	104%	103%	108%	103%
Langley HS	2,370	2,370	1,972	83%	-	-	-	-	-	-	2,016	1,991	1,986	1,931	1,855	85%	84%	84%	81%	78%
Longfellow MS	1,374	1,374	1,334	97%	2	-	-	-	-	-	1,420	1,423	1,405	1,441	1,390	103%	104%	102%	105%	101%
Cooper MS ²	1,080 / 1,120	1,120	992	89%	4	-	-	-	-	-	951	958	976	975	980	85%	86%	87%	87%	88%
ADJUSTED McLean HS ¹	2,343	2,343	2,022	86%	6	12	-	-328	-328	2,022	2,069	2,068	2,019	2,123	1,970	88%	88%	86%	91%	84%
ADJUSTED Langley HS	2,370	2,370	2,300	97%	-	-	+328	-	+328	2,300	2,356	2,351	2,370	2,348	2,310	99%	99%	100%	99%	97%
ADJUSTED Longfellow MS	1,374	1,374	1,190	87%	2	-	-	-144	-144	1,190	1,262	1,248	1,224	1,257	1,195	92%	91%	89%	91%	87%
ADJUSTED Cooper MS ²	1,120	1,120	1,136	101%	4	-	+144	-	+144	1,136	1,109	1,133	1,157	1,159	1,175	99%	101%	103%	103%	105%

¹McLean HS design and program capacity reflect the addition of a modular. Construction estimated to complete in December 2020.

²Cooper MS design and program capacity reflect the renovation. Construction began in fall 2020.

Sources:

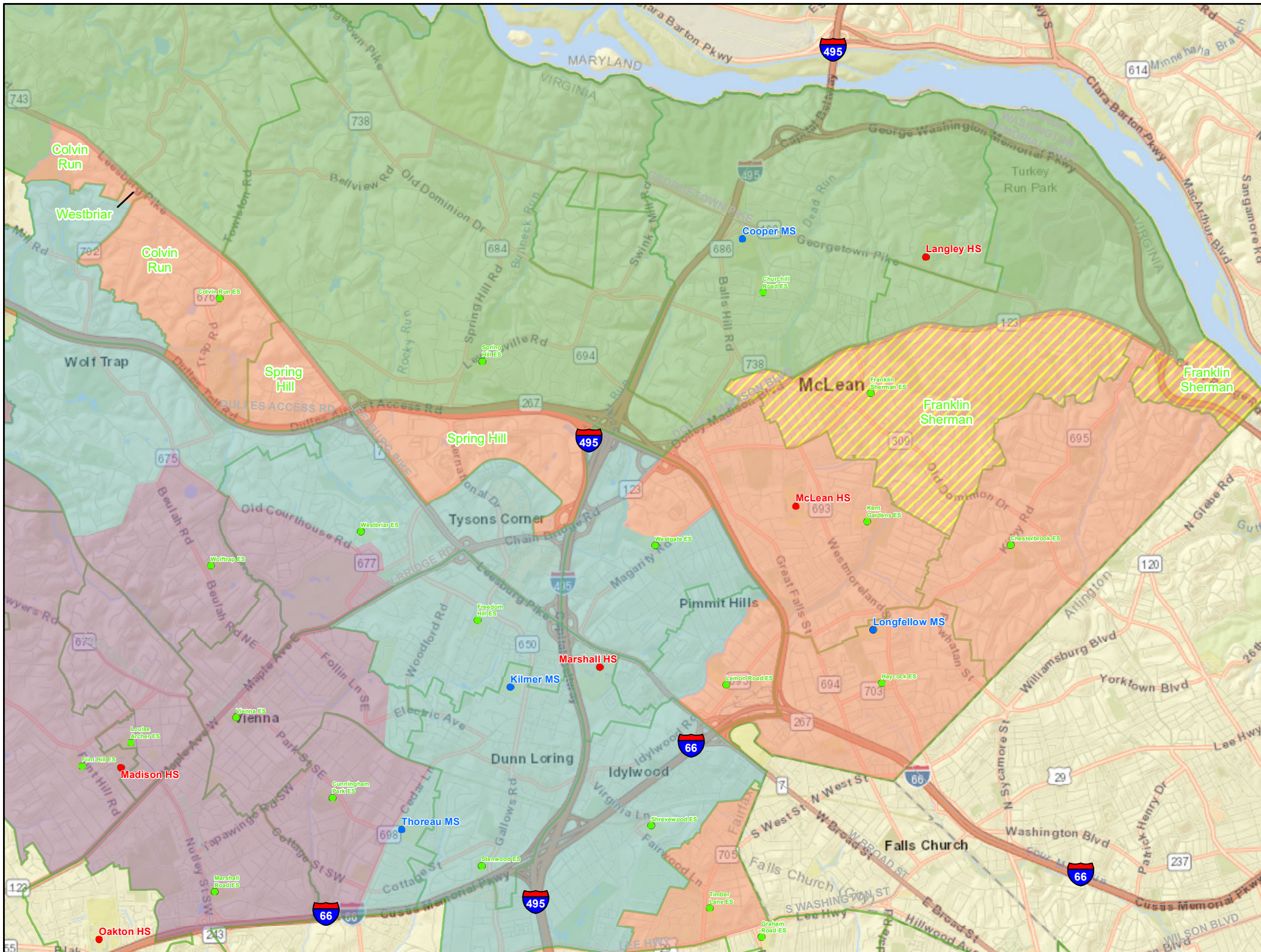
1. FCPS, *FY 2021-25 Capital Improvement Program*, January 2020.
2. FCPS Facilities Planning Services, *SY 2019-20 Modified Capacity, Membership, and Projections*.

Notes:

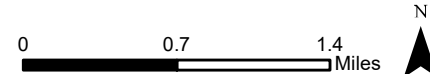
1. Numbers highlighted in yellow are future design capacity after a renovation.
2. Student adjustment considers all residing students and do not factor in transfers to other schools.
3. Student adjustment includes special education students.
4. Student adjustment numbers do not include postgraduate students.

**Additional Information
Other Areas Considered**

**Franklin Sherman ES
Split Feeder
Map**

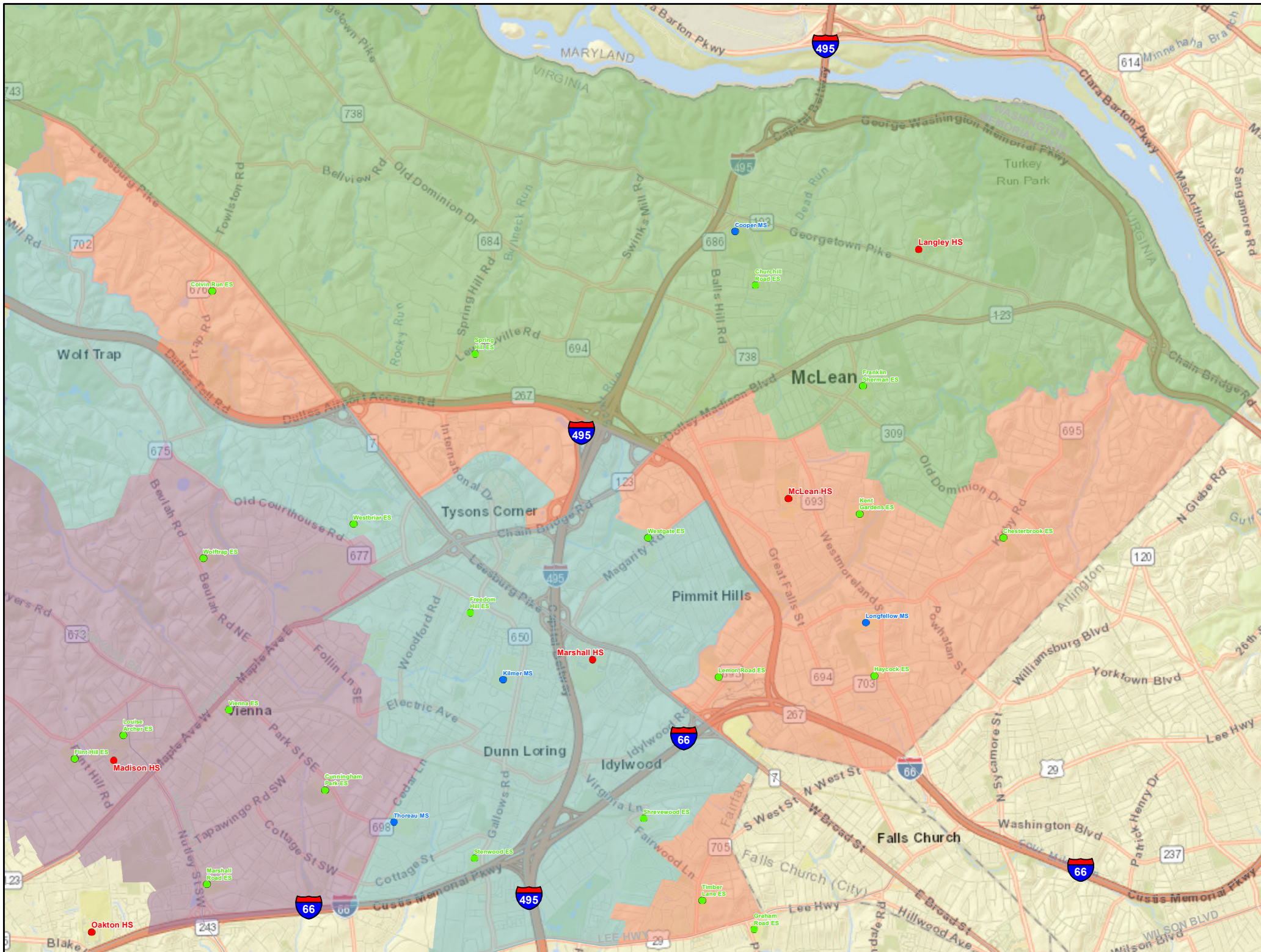


- Legend**
- Area Reassigned
 - High School Boundaries**
 - Langley HS
 - Madison HS
 - Marshall HS
 - McLean HS
 - Elementary School
 - Middle School
 - High School
 - Administrative Buildings and Centers

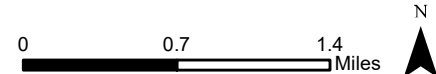


Additional Information Other Areas Considered

Franklin Sherman ES Split Feeder Simple Boundaries Map



- Legend**
- High School Boundaries**
- Adjusted Langley HS
 - Madison HS
 - Marshall HS
 - Adjusted McLean HS
- Elementary School**
- Middle School**
- High School**
- Administrative Buildings and Centers**



**Additional Information – Other Areas Considered
Chesterbrook ES**

- Based on community feedback, reassigning Chesterbrook ES was evaluated and is shown in Table 11
- Creates slight capacity deficit at Langley HS
- Creates slight to moderate capacity deficit at Cooper MS

Table 11: Considering Chesterbrook ES

Facility		SY 2019-20					Student Adjustment (SY 19-20 numbers)				Projected Membership					Projected Program Capacity Utilization				
School	Design Capacity	Program Capacity	Member-ship	Program Capacity Utilization	Temporary Class-rooms	Modular Class-rooms	In	Out	Net	Total	SY20-21	SY21-22	SY22-23	SY23-24	SY24-25	SY20-21	SY21-22	SY22-23	SY23-24	SY24-25
McLean HS ¹	2,343	2,343	2,350	100%	6	12	-	-	-	-	2,409	2,428	2,403	2,540	2,425	103%	104%	103%	108%	103%
Langley HS	2,370	2,370	1,972	83%	-	-	-	-	-	-	2,016	1,991	1,986	1,931	1,855	85%	84%	84%	81%	78%
Longfellow MS	1,374	1,374	1,334	97%	2	-	-	-	-	-	1,420	1,423	1,405	1,441	1,390	103%	104%	102%	105%	101%
Cooper MS ²	1,080 / 1,120	1,120	992	89%	4	-	-	-	-	-	951	958	976	975	980	85%	86%	87%	87%	88%
ADJUSTED McLean HS ¹	2,343	2,343	1,916	82%	6	12	-	-434	-434	1,916	1,961	1,959	1,949	2,086	1,942	84%	84%	83%	89%	83%
ADJUSTED Langley HS	2,370	2,370	2,406	102%	-	-	+434	-	+434	2,406	2,464	2,460	2,440	2,385	2,338	104%	104%	103%	101%	99%
ADJUSTED Longfellow MS	1,374	1,374	1,103	80%	2	-	-	-231	-231	1,103	1,175	1,204	1,169	1,182	1,155	86%	88%	85%	86%	84%
ADJUSTED Cooper MS ²	1,120	1,120	1,223	109%	4	-	+231	-	+231	1,223	1,196	1,177	1,212	1,234	1,215	107%	105%	108%	110%	108%

¹McLean HS design and program capacity reflect the addition of a modular. Construction estimated to complete in December 2020.

²Cooper MS design and program capacity reflect the renovation. Construction began in fall 2020.

Sources:

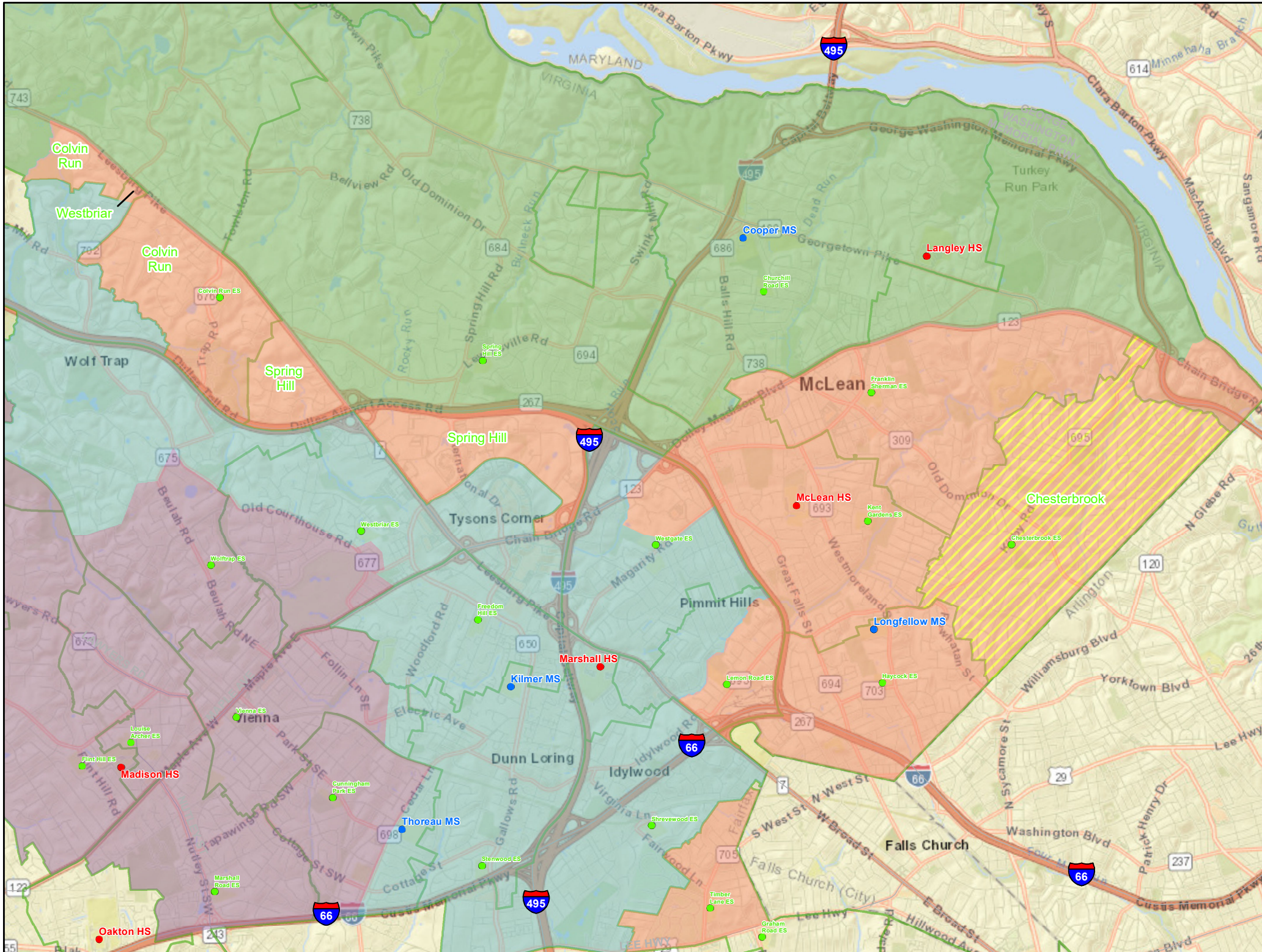
1. FCPS, *FY 2021-25 Capital Improvement Program*, January 2020.
2. FCPS Facilities Planning Services, *SY 2019-20 Modified Capacity, Membership, and Projections*.

Notes:

1. Numbers highlighted in yellow are future design capacity after a renovation.
2. Student adjustment considers all residing students and do not factor in transfers to other schools.
3. Student adjustment includes special education students.
4. Student adjustment numbers do not include postgraduate students.

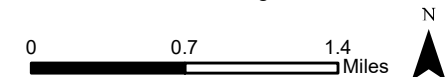
**Additional Information
Other Areas Considered**

**Chesterbrook ES
Map**



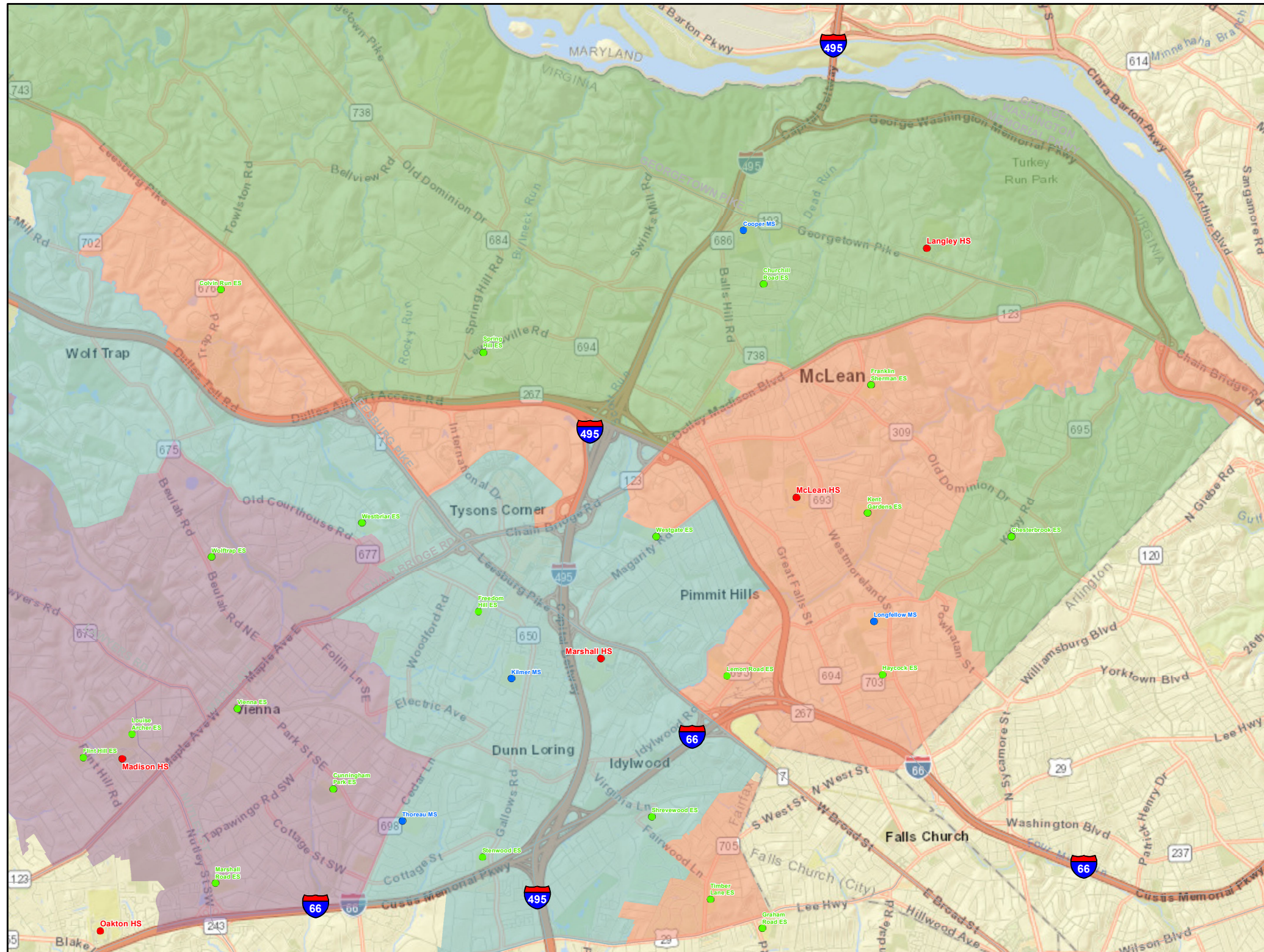
Legend

-  Area Reassigned
- High School Boundaries**
-  Langley HS
-  Madison HS
-  Marshall HS
-  McLean HS
-  Elementary School
-  Middle School
-  High School
-  Administrative Buildings and Centers



**Additional Information
Other Areas Considered**

**Chesterbrook ES
Simple Boundaries Map**

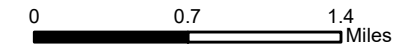


Legend

High School Boundaries

- Adjusted Langley HS
- Madison HS
- Marshall HS
- Adjusted McLean HS

- Elementary School
- Middle School
- High School
- Administrative Buildings and Centers



**Additional Information – Other Areas Considered
Colvin Run, Spring Hill, and portion of Westbriar ES**

- Reassigning the Colvin Run and Spring Hill ES split feeders and a portion of Westbriar ES was evaluated and is shown in Table 12
- Eliminates the split feeder at both Colvin Run and Spring Hill ES
- Creates slight capacity deficit at Langley HS
- Creates slight to moderate capacity deficit at Cooper MS

Table 12: Considering Colvin Run, Spring Hill, and portion of Westbriar ES

Facility		SY 2019-20					Student Adjustment (SY 19-20 students)				Projected Membership					Projected Program Capacity Utilization				
School	Design Capacity	Program Capacity	Member-ship	Program Capacity Utilization	Temporary Class-rooms	Modular Class-rooms	In	Out	Net	Total	SY20-21	SY21-22	SY22-23	SY23-24	SY24-25	SY20-21	SY21-22	SY22-23	SY23-24	SY24-25
McLean HS ¹	2,343	2,343	2,350	100%	6	12	-	-	-	-	2,409	2,428	2,403	2,540	2,425	103%	104%	103%	108%	103%
Langley HS	2,370	2,370	1,972	83%	-	-	-	-	-	-	2,016	1,991	1,986	1,931	1,855	85%	84%	84%	81%	78%
Longfellow MS	1,374	1,374	1,334	97%	2	-	-	-	-	-	1,420	1,423	1,405	1,441	1,390	103%	104%	102%	105%	101%
Cooper MS ²	1,080 / 1,120	1,120	992	89%	4	-	-	-	-	-	951	958	976	975	980	85%	86%	87%	87%	88%
ADJUSTED McLean HS ¹	2,343	2,343	1,979	84%	6	12	-	-371	-371	1,979	2,008	2,028	1,960	2,075	1,937	86%	87%	84%	89%	83%
ADJUSTED Langley HS	2,370	2,370	2,343	85%	-	-	+371	-	+371	2,343	2,417	2,391	2,429	2,396	2,343	102%	101%	102%	101%	99%
ADJUSTED Longfellow MS	1,374	1,374	1,168	99%	2	-	-	-166	-166	1,168	1,235	1,204	1,182	1,220	1,192	90%	88%	86%	89%	87%
ADJUSTED Cooper MS ²	1,080 / 1,120	1,120	1,158	103%	4	-	+166	-	+166	1,158	1,136	1,177	1,199	1,196	1,178	101%	105%	107%	107%	105%

¹McLean HS design and program capacity reflect the addition of a modular. Construction estimated to complete in December 2020.

²Cooper MS design and program capacity reflect the renovation. Construction began in fall 2020.

Sources:

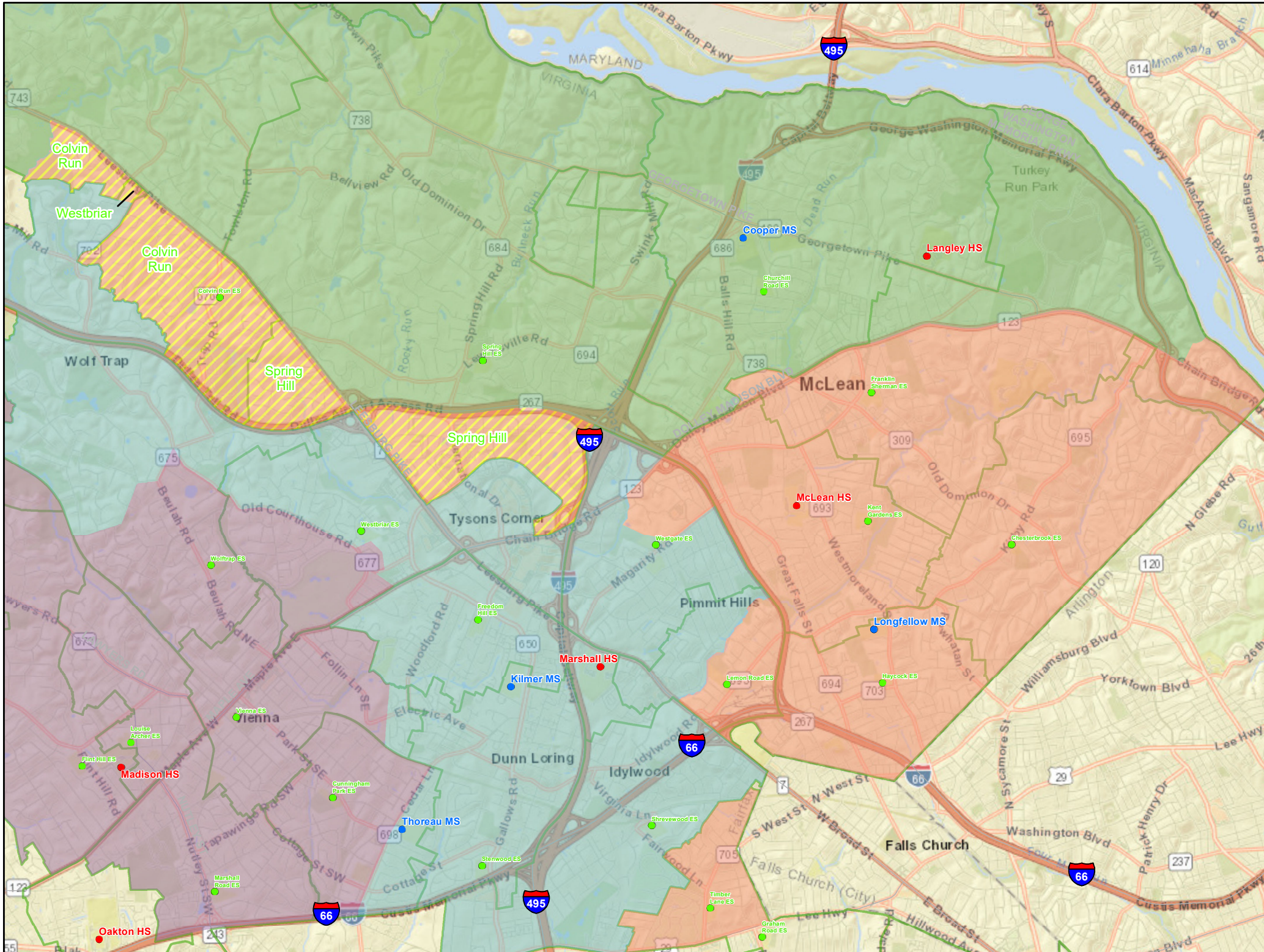
1. FCPS, *FY 2021-25 Capital Improvement Program*, January 2020.
2. FCPS Facilities Planning Services, *SY 2019-20 Modified Capacity, Membership, and Projections*.

Notes:

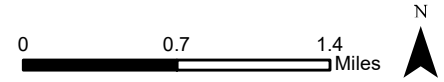
1. Numbers highlighted in yellow are future design capacity after a renovation.
2. Student adjustment considers all residing students and do not factor in transfers to other schools.
3. Student adjustment includes special education students.
4. Student adjustment numbers do not include postgraduate students.

**Additional Information
Other Areas Considered**

**Colvin Run, Spring Hill,
and a portion of Westbriar ES
Map**

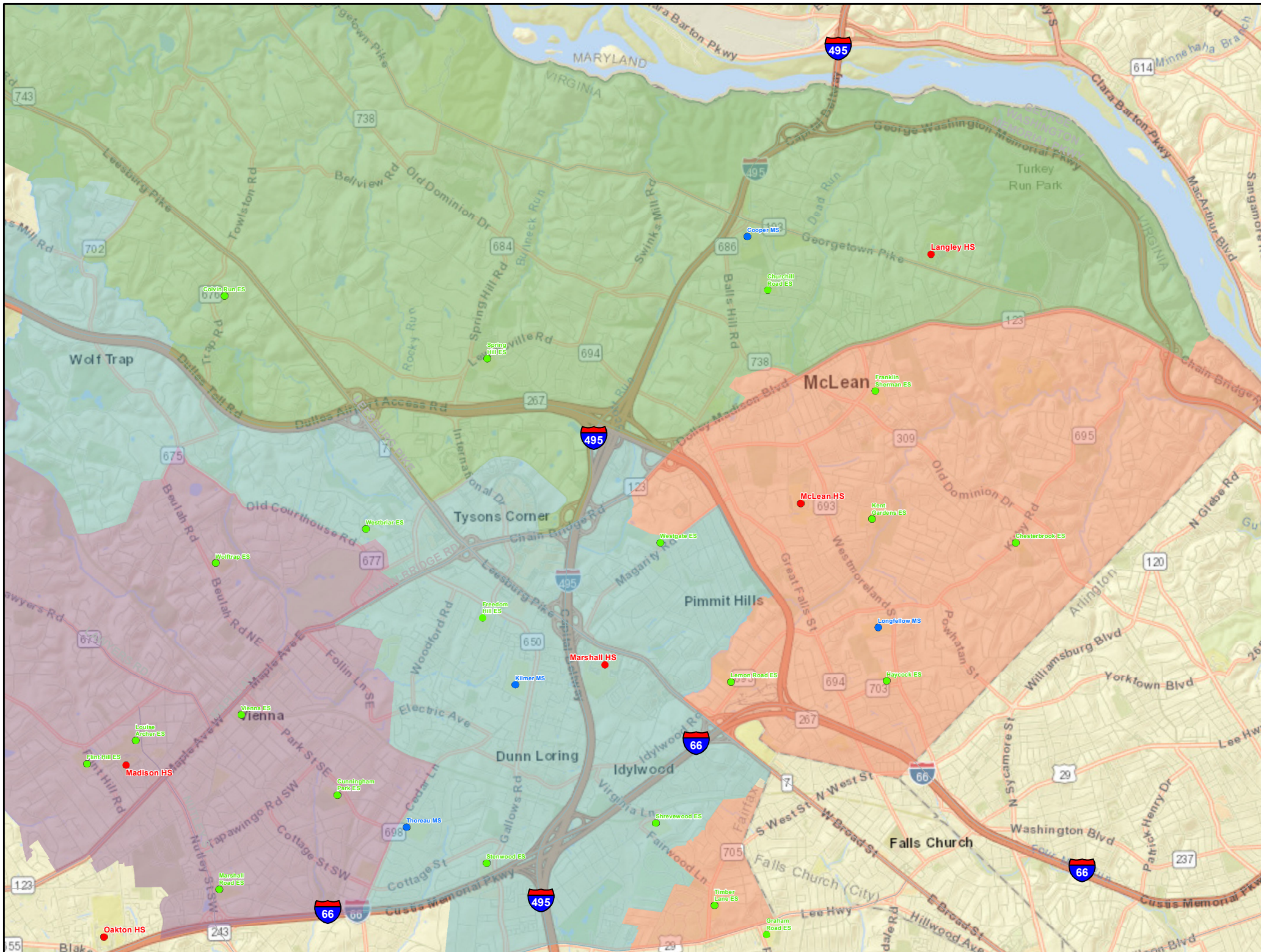


- Legend**
- Area Reassigned
 - High School Boundaries**
 - Langley HS
 - Madison HS
 - Marshall HS
 - McLean HS
 - Elementary School
 - Middle School
 - High School
 - Administrative Buildings and Centers



**Additional Information
Other Areas Considered**

**Colvin Run, Spring Hill,
and a portion of Westbriar ES
Simple Boundaries Map**

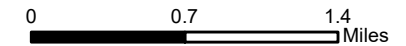


Legend

High School Boundaries

- Adjusted Langley HS
- Madison HS
- Marshall HS
- Adjusted McLean HS

- Elementary School
- Middle School
- High School
- Administrative Buildings and Centers



Additional Information
Other High Schools

Falls Church HS

- Feedback considering reassigning students from McLean HS to Falls Church HS
 - Comments: “Move Falls Church area south of Route 7: to move to Marshall/Falls Church”
- Considerations
 - Outside of boundary study scope
 - Including the middle school feeder would involve Jackson MS
 - Falls Church HS had a moderate capacity deficit (**104%**) in SY 2019-20
 - Jackson MS had a capacity surplus (84%) in SY 2019-20

Table 13: Falls Church HS and Jackson MS Projected Membership and Capacity Utilization

Facility		SY 2019-20					Projected Membership					Projected Program Capacity Utilization				
School	Design / Future Design Capacity	Program Capacity	Membership	Program Capacity Utilization %	Temporary Class-rooms	Modular Class-rooms	SY20-21	SY21-22	SY22-23	SY23-24	SY24-25	SY20-21	SY21-22	SY22-23	SY23-24	SY24-25
Falls Church HS	1,962	1,961	2,034	104%	8	-	2,174	2,135	2,180	2,302	2,311	111%	109%	111%	117%	118%
Jackson MS	1,314	1,231	1,038	84%	6	-	1,088	1,127	1,102	1,012	1,026	88%	92%	90%	82%	83%

Source: FCPS, FY 2021-25 Capital Improvement Program, January 2020.

Notes:
 1. Numbers highlighted in yellow are future design capacity and project capacity utilization percentages after a renovation or capacity enhancement.

Herndon HS

- Feedback considering reassigning students from McLean HS to Herndon HS
 - Comments: “Send Great Falls/Reston border kids to Herndon High School and South Lakes High School”; “Colvin Run → Herndon”
- Considerations
 - Outside of boundary study scope
 - Including the middle school feeder would involve Herndon MS
 - Herndon HS had a moderate capacity deficit (**109%**) in SY 2019-20 and projected to be over 100% capacity
 - Herndon MS was approaching a capacity deficit (97%) in SY 2019-20

Table 14: Herndon HS and Herndon MS Projected Membership and Capacity Utilization

Facility		SY 2019-20					Projected Membership					Projected Program Capacity Utilization				
School	Design / Future Design Capacity	Program Capacity	Membership	Program Capacity Utilization %	Temporary Class-rooms	Modular Class-rooms	SY20-21	SY21-22	SY22-23	SY23-24	SY24-25	SY20-21	SY21-22	SY22-23	SY23-24	SY24-25
Herndon HS	2,146 / 2,500	2,145	2,346	109%	26	-	2,334	2,420	2,464	2,509	2,585	93%	97%	99%	100%	103%
Herndon MS	1,176	1,169	1,131	97%	6	-	1,163	1,173	1,110	1,073	1,086	100%	100%	95%	92%	93%

Source: FCPS, FY 2021-25 Capital Improvement Program, January 2020.

Notes:
 1. Numbers highlighted in yellow are future design capacity and project capacity utilization percentages after a renovation or capacity enhancement.

**Additional Information
Other High Schools**

Madison HS

- Feedback considering reassigning students from McLean HS to Madison HS
 - Comment: “Is Marshall or Madison an option for MHS relief?”
- Considerations
 - Outside of boundary study scope
 - Including the middle school feeder would involve Thoreau MS
 - Would create an attendance island (Madison HS and Thoreau MS boundaries are not adjacent to McLean HS or Longfellow MS)
 - Madison HS had a moderate capacity deficit (**108%**) in SY 2019-20
 - Thoreau MS was approaching a capacity deficit (95%) in SY 2019-20

Table 15: Madison HS and Thoreau MS Projected Membership and Capacity Utilization

Facility		SY 2019-20					Projected Membership					Projected Program Capacity Utilization				
School	Design / Future Design Capacity	Program Capacity	Membership	Program Capacity Utilization %	Temporary Class-rooms	Modular Class-rooms	SY20-21	SY21-22	SY22-23	SY23-24	SY24-25	SY20-21	SY21-22	SY22-23	SY23-24	SY24-25
Madison HS	2,115 / 2,500	2,113	2,272	108%	3	-	2,314	2,337	2,319	2,328	2,301	109%	111%	110%	93%	92%
Thoreau MS	1,395	1,392	1,319	95%	-	-	1,339	1,319	1,304	1,255	1,244	96%	95%	94%	90%	89%

Source: FCPS, FY 2021-25 Capital Improvement Program, January 2020.

- Notes:
1. Numbers highlighted in **yellow** are future design capacity and project capacity utilization percentages after a renovation or capacity enhancement.

Marshall HS

- Feedback considering reassigning students from McLean HS to Marshall HS
 - Comment: “Move Timer Lane, consolidate Lemon Road and Westgate to Marshall”.
- Considerations
 - Outside of boundary study scope
 - Including the middle school feeder would involve Kilmer MS
 - Marshall HS was at 91% capacity in SY 2019-20 and projected to increase
 - Kilmer MS was at 100% capacity in SY 2019-20 and projected to increase over 100% in projections

Table 16: Marshall HS and Kilmer MS Projected Membership and Capacity Utilization

Facility		SY 2019-20					Projected Membership					Projected Program Capacity Utilization				
School	Design / Future Design Capacity	Program Capacity	Membership	Program Capacity Utilization %	Temporary Class-rooms	Modular Class-rooms	SY20-21	SY21-22	SY22-23	SY23-24	SY24-25	SY20-21	SY21-22	SY22-23	SY23-24	SY24-25
Marshall HS	2,334	2,333	2,134	91%	-	12	2,135	2,080	2,121	2,156	2,248	92%	89%	91%	92%	96%
Kilmer MS	1,152	1,146	1,146	100%	14	-	1,169	1,181	1,225	1,247	1,234	102%	103%	107%	109%	108%

Source: FCPS, FY 2021-25 Capital Improvement Program, January 2020.

- Notes:
1. Numbers highlighted in **yellow** are future design capacity and project capacity utilization percentages after a renovation or capacity enhancement.

Additional Information
Other High Schools

South Lakes HS

- Feedback considering reassigning students from McLean HS to South Lakes HS
 - Comment: “Send Great Falls/Reston border kids to Herndon High School and South Lakes High School”
- Considerations
 - Outside of boundary study scope
 - Including the middle school feeder would involve Hughes MS
 - South Lakes HS was at 98% capacity in SY 2019-20 and projected to increase to over 100% within five years
 - Hughes MS was at 96% capacity in SY 2019-20

Table 17: South Lakes HS and Hughes MS

Facility		SY 2019-20					Projected Membership					Projected Program Capacity Utilization				
School	Design / Future Design Capacity	Program Capacity	Membership	Program Capacity Utilization %	Temporary Class-rooms	Modular Class-rooms	SY20-21	SY21-22	SY22-23	SY23-24	SY24-25	SY20-21	SY21-22	SY22-23	SY23-24	SY24-25
South Lakes HS	2,717	2,542	2,492	98%	2	-	2,557	2,560	2,610	2,577	2,522	101%	101%	103%	101%	99%
Hughes MS	1,114 / 1,250	1,106	1,056	96%	8	-	1,066	1,050	998	1,003	1,011	96%	84%	80%	80%	81%

Source: FCPS, FY 2021-25 Capital Improvement Program, January 2020.

Notes:

1. Numbers highlighted in yellow are future design capacity and project capacity utilization percentages after a renovation or capacity enhancement.