



Fairfax County
PUBLIC SCHOOLS

ENGAGE • INSPIRE • THRIVE

BOUNDARY SCOPE
Elementary Schools in the Justice
High School Pyramid

Community Scoping Meeting
March 9 and 10, 2021

Agenda

Welcome and Introductions

Goal for the Meeting

Boundary Adjustment Process

Timeline

Small Group Discussion

Next Steps

Fairfax County School Board

Karen Keys-Gamarra
Abrar Omeish
Rachna Sizemore Heizer
Megan McLaughlin
Elaine Tholen
Melanie K. Meren
Tamara Derenak Kaufax
Ricardy Anderson, Chair
Karen Corbett Sanders
Karl Frisch
Laura Jane Cohen
Stella Pekarsky, Vice Chair
Nathan Onibudo

Member-At-Large
Member-At-Large
Member-At-Large
Braddock District
Dranesville District
Hunter Mill District
Lee District
Mason District
Mount Vernon District
Providence District
Springfield District
Sully District
School Board Student
Representative

Welcome and Introductions

Dr. Fabio Zuluaga, *Assistant Superintendent, Region 2*

Cecilia Vanderhuy, *Principal, Belvedere ES*

Jeff Platenberg, *Assistant Superintendent, Facilities and Transportation*

Sherry Shin, *Principal, Mason Crest ES*

Jessica Gillis, *Special Projects Administrator, Capital Improvements and Planning*

Rebecca Forgy, *Principal, Parklawn ES*

Dwayne Young, *Interim Principal, Glen Forest ES*

Mattie Fallen, *Principal, Sleepy Hollow ES*

Satonya Dews, *Principal, Bailey's ES*

Michelle Lis, *Office of Professional Learning and Family Engagement*

Marie Lemmon, *Principal, Bailey's Upper ES*

Kathleen Thomas, *Office of Communications and Community Relations*

Karim Daugherty, *Principal, Beech Tree ES*



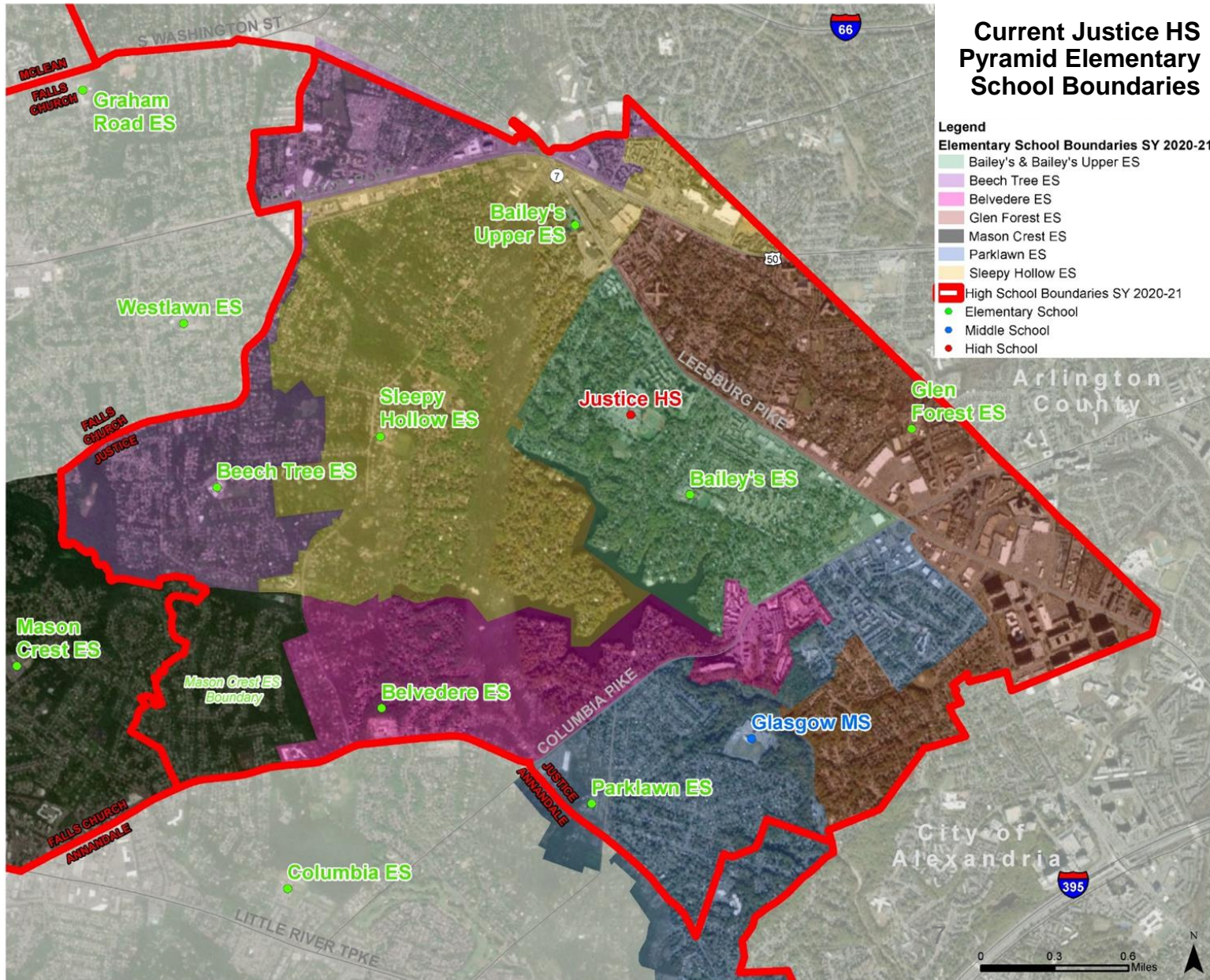
Tonight's Goal

To identify possible boundary solutions of elementary schools in the Justice HS Pyramid to address overcapacity in elementary schools.

School Capacity & Membership

							PROJECTED MEMBERSHIP					PROJECTED PROGRAM CAPACITY UTILIZATION				
Elementary School	Design Capacity	Program Capacity	SY 19-20 Membership	Program Capacity Utilization %	Temporary Classrooms	Modular Classrooms	SY 20-21	SY 21-22	SY 22-23	SY 23-24	SY 24-25	SY 20-21	SY 21-22	SY 22-23	SY 23-24	SY 24-25
Bailey's	1,360	897	839	94%	4	10	878	868	840	836	866	98%	97%	94%	93%	97%
Bailey's without Modular	1,080	765	839	110%	4	-	878	868	840	836	866	115%	113%	110%	109%	113%
Bailey's Upper	812	718	552	77%	-	-	551	578	639	668	652	77%	81%	89%	93%	91%
Beech Tree	592	488	382	78%	-	-	374	387	393	404	400	77%	79%	81%	83%	82%
Belvedere	840	669	633	95%	6	-	644	612	640	621	602	96%	91%	96%	93%	90%
Glen Forest	1,344	1,076	1,092	101%	12	17	1,090	1,081	1,083	1,095	1,077	101%	100%	101%	102%	100%
Glen Forest without Modular	924	740	1,092	148%	12	-	1,090	1,081	1,083	1,095	1,077	147%	146%	146%	148%	146%
Mason Crest	1,064	666	600	90%	-	-	620	615	635	638	634	93%	92%	95%	96%	95%
Parklawn	1,192	780	669	86%	7	10	663	674	665	659	667	85%	86%	85%	84%	86%
Parklawn without Modular	912	670	669	100%	7	-	663	674	665	659	667	99%	101%	99%	98%	100%
Sleepy Hollow	594	492	424	86%	5	-	432	434	433	436	440	88%	88%	88%	89%	89%

Current Justice HS Pyramid Elementary School Boundaries



Boundary Adjustment Process

1. **Scope of Boundary Study Presentation:** A scope of study for schools to be considered is presented to the School Board for approval.
2. **Community Meetings**
 - a) **Boundary Scoping:** The community is asked to suggest which schools and areas should be considered; may be done in advance of a Scope of Boundary Study presentation to the School Board.
 - b) **Boundary Study:** Possible boundary change options are prepared by staff for consideration with the community and to collect feedback on the options.
3. **School Board Meeting/New Business:** Staff present a recommendation for a boundary adjustment to the School Board.
4. **School Board Public Hearing:** The School Board holds a Public Hearing on the boundary adjustment being considered.
5. **School Board Meeting/Action:** The School Board votes on a decision for the boundary adjustment.

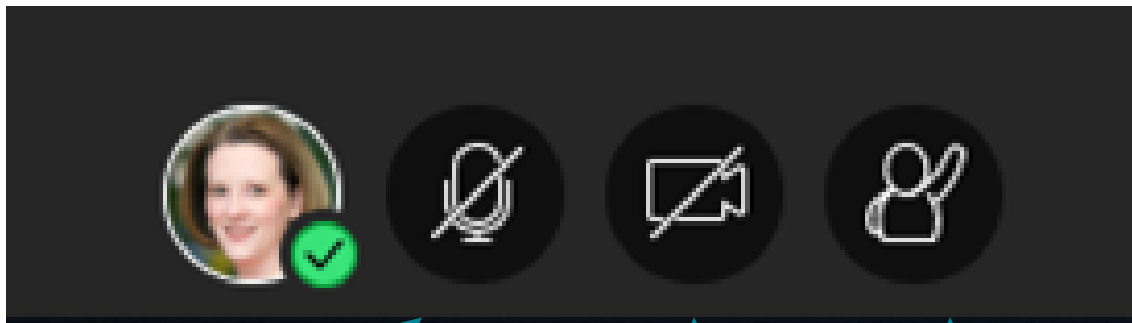
Timeline

Today	Boundary Scope Meeting
TBD	Boundary Study Meeting
TBD	Public Hearing
TBD	School Board Action
TBD	New Boundary Effective

Questions to Consider

1. What nearby schools should be considered for the boundary adjustment?
2. What are the strengths of changing the boundary?
3. What are the challenges of changing the boundary?
4. What else would you like FCPS to know?





Unmute/mute microphone

Turn camera off/on

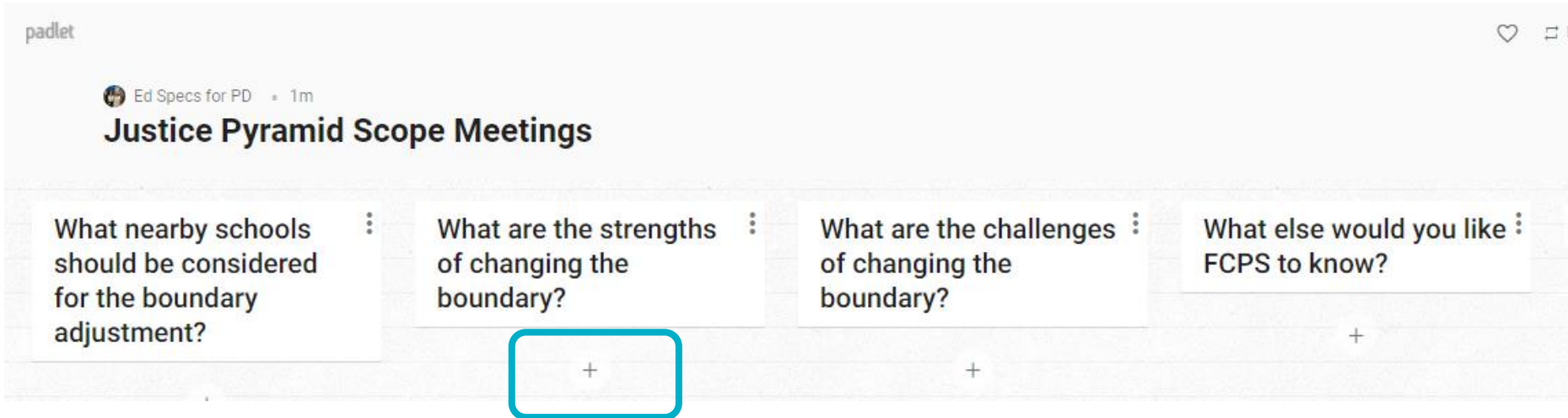
Raise your hand to speak

Process:

- Provide your thoughts using Padlet
- You'll have 10 minutes to respond to the questions and review others' responses silently
- The group will come together for 10 minutes to share out any big ideas



Using Padlet



padlet

Ed Specs for PD • 1m

Justice Pyramid Scope Meetings

What nearby schools should be considered for the boundary adjustment?

What are the strengths of changing the boundary?

What are the challenges of changing the boundary?

What else would you like FCPS to know?

+

+

+

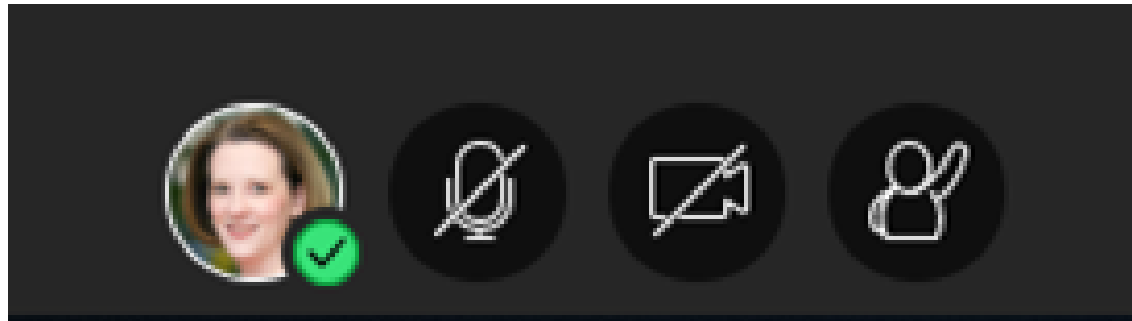
Click on the + below each question to add a comment.

Padlet- March 9 Meeting 1



Share Out

Is there anything you would like to share out for the good of the group? (Limit 1 minute)



Unmute/mute microphone

Turn camera off/on

Raise your hand to speak



Return to Main Meeting Room

Next Steps

Feedback

- Shared with the School Board and the Superintendent.
- Facilities staff will develop options for the boundary adjustment.

Feedback will be posted on the FCPS website.
Search: Justice Elementary Schools



www.fcps.edu