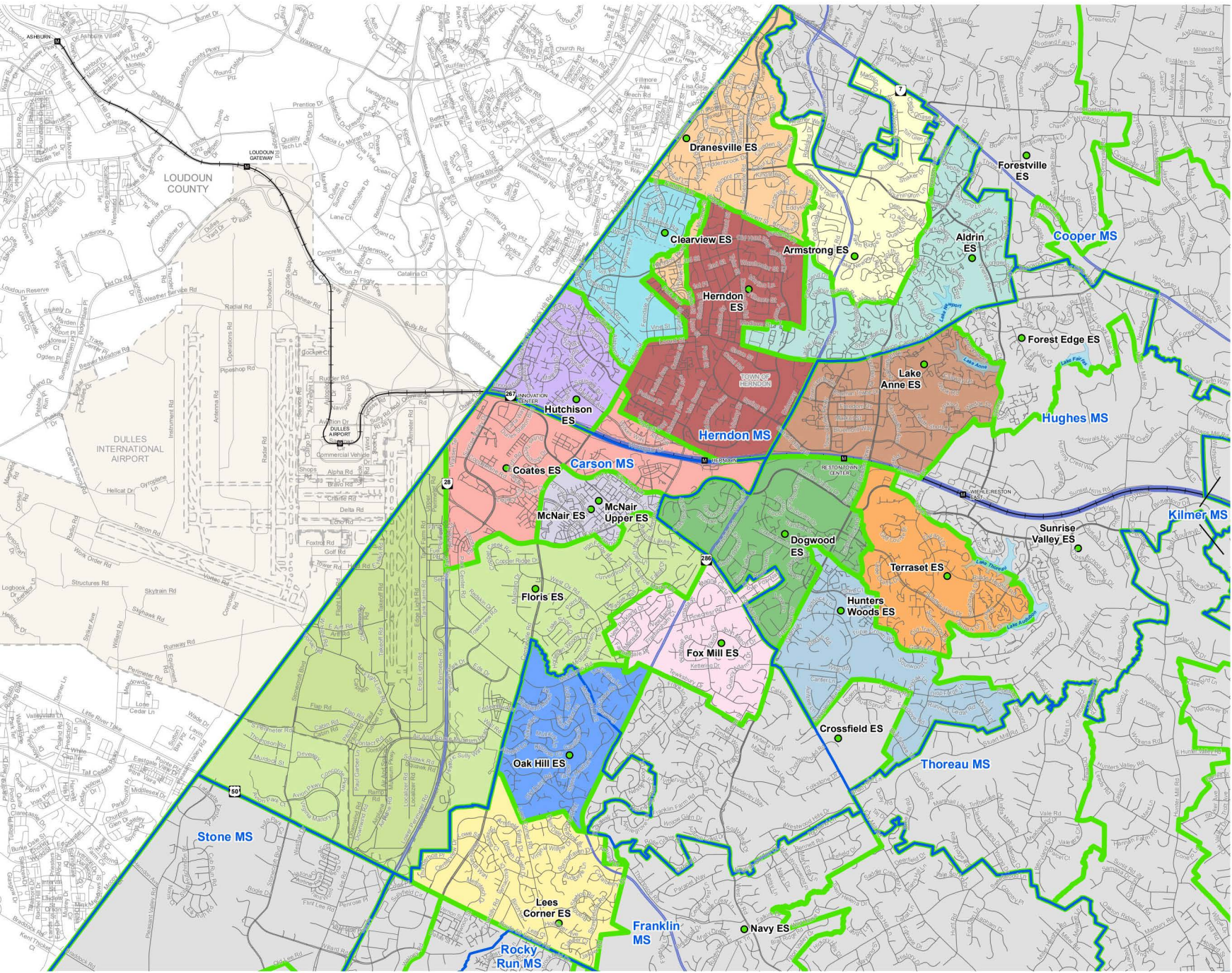


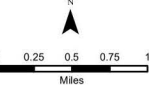
Coates Elementary School (ES) Boundary Study

ES Boundaries and Middle School (MS) Boundaries



- Elementary School Locations
- ▭ Middle School Boundaries
- ▭ Elementary School Boundaries
- ▭ Aldrin ES
- ▭ Armstrong ES
- ▭ Clearview ES
- ▭ Coates ES
- ▭ Dogwood ES
- ▭ Dranesville ES
- ▭ Floris ES
- ▭ Fox Mill ES
- ▭ Herndon ES
- ▭ Hunters Woods ES
- ▭ Hutchison ES
- ▭ Lake Anne ES
- ▭ Lees Corner ES
- ▭ McNair/McNair Upper ES
- ▭ Oak Hill ES
- ▭ Terraset ES
- ▭ Other Elementary Schools
- - - Political Jurisdictions

Source: Fairfax County Public Schools, *School Boundaries, 2024*.



Fairfax County Public Schools
Office of Facilities Planning Services
January 2025

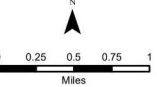
Coates Elementary School (ES) Boundary Study

ES Boundaries and High School (HS) Boundaries

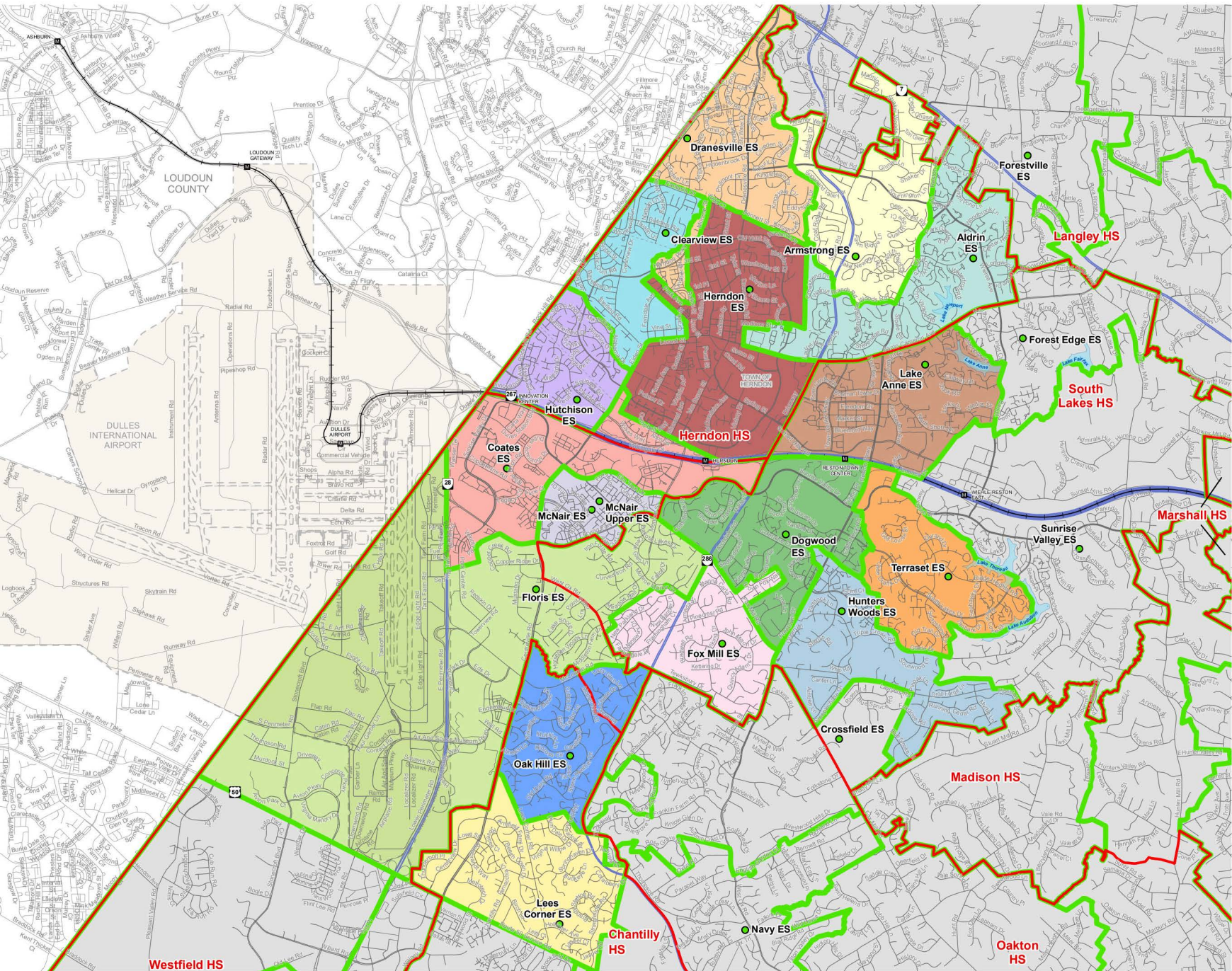


- Elementary School Locations
- ▭ High School Boundaries
- ▭ Elementary School Boundaries
- ▭ Aldrin ES
- ▭ Armstrong ES
- ▭ Clearview ES
- ▭ Coates ES
- ▭ Dogwood ES
- ▭ Dranesville ES
- ▭ Floris ES
- ▭ Fox Mill ES
- ▭ Herndon ES
- ▭ Hunters Woods ES
- ▭ Hutchison ES
- ▭ Lake Anne ES
- ▭ Lees Corner ES
- ▭ McNair/McNair Upper ES
- ▭ Oak Hill ES
- ▭ Terraset ES
- ▭ Other Elementary Schools
- ▭ Political Jurisdictions

Source: Fairfax County Public Schools, *School Boundaries, 2024*.



Fairfax County Public Schools
Office of Facilities Planning Services
January 2025



Westfield HS

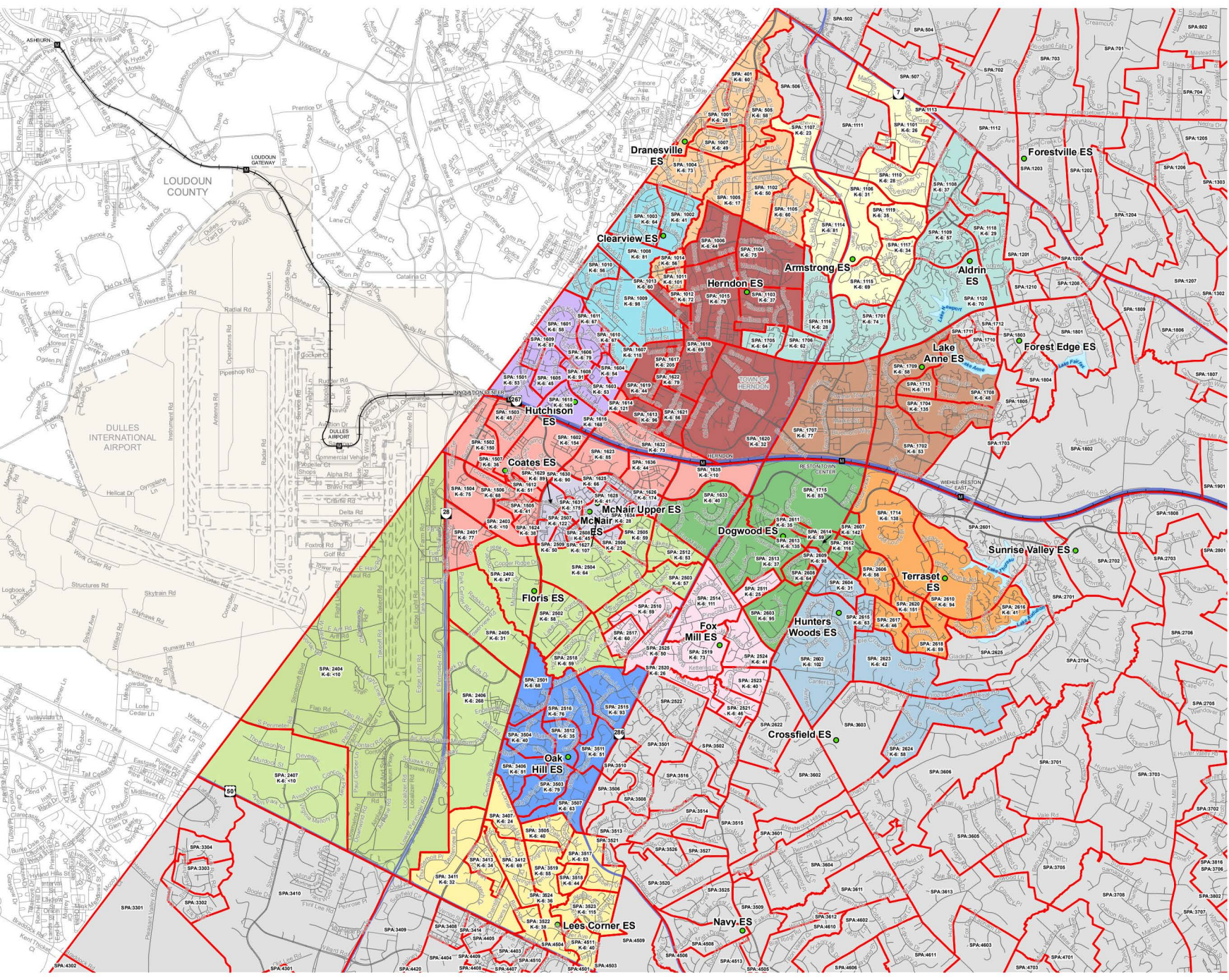
Chantilly HS

Madison HS

Oakton HS

Coates Elementary School (ES) Boundary Study

Student Planning Area (SPA) and Residing ES Students



- Elementary School Locations
- SPAs
- Aldrin ES
- Armstrong ES
- Clearview ES
- Coates ES
- Dogwood ES
- Dranesville ES
- Floris ES
- Fox Mill ES
- Herndon ES
- Hunters Woods ES
- Hutchison ES
- Lake Anne ES
- Lees Corner ES
- McNair/McNair Upper ES
- Oak Hill ES
- Terraset ES
- Other Elementary Schools
- Political Jurisdictions

Sources:
 1. Fairfax County Public Schools, *School Boundaries, 2024*.
 2. Fairfax County Public Schools, *Certified Membership, SY 2024-25*.
 3. Fairfax County Public Schools, *Student Planning Areas, 2024*.

Notes:
 1. Grades K-6 counts are based on residing student membership from kindergarten through 6th grade.
 2. Residing student membership includes general education, AAP, and special education.
 3. To protect student privacy, student counts less than 10 are summarized as "<10".

