

# MOSAIC ELEMENTARY SCHOOL COMMUNITY MEETING



OCTOBER 27, 2021

# Team Introduction

- FCPS Design and Construction
  - Holli McKinley – Acting Coordinator/  
Architectural Engineer
- Consultant Team
  - Perkins Eastman – Architect
  - Pennoni – Civil Engineer
  - Ehlert Bryan – Structural Engineer
  - CMTA – Mechanical, Electrical, Plumbing (MEP)  
Engineers

# Project Scope

Full renovation of existing elementary school, replacing all building systems and finishes, with several additions:

- Main entry
- Classrooms
- Library expansion
- Cafeteria expansion
- Gymnasium

# Project Timeline

- ❖ Bid Opening Spring 2023
- ❖ Project Award Spring 2023
- ❖ Construction Start Spring/Summer 2023
- ❖ Completion of Project Spring 2025

# Proposed Site Plan

**Buses:** (Currently MES has 13 assigned buses)

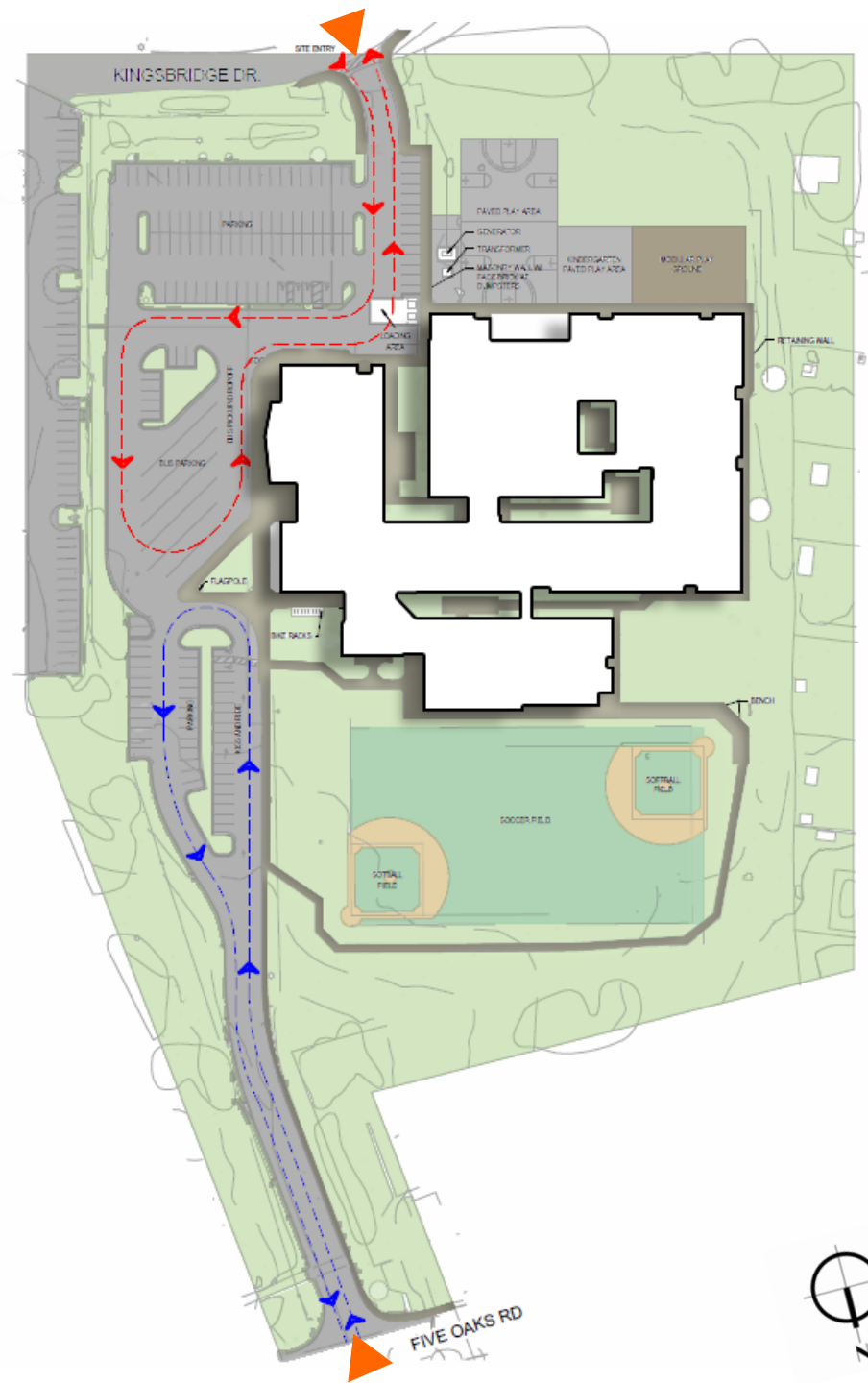
- Existing: (6) double stacked bus parking spaces
- Proposed: (7) double stacked bus parking spaces

## Parking:

- Existing: (91) spaces
- Proposed: (146) spaces + (2) loading  
*(required: 145 spaces + 2 loading)*

## Legend:

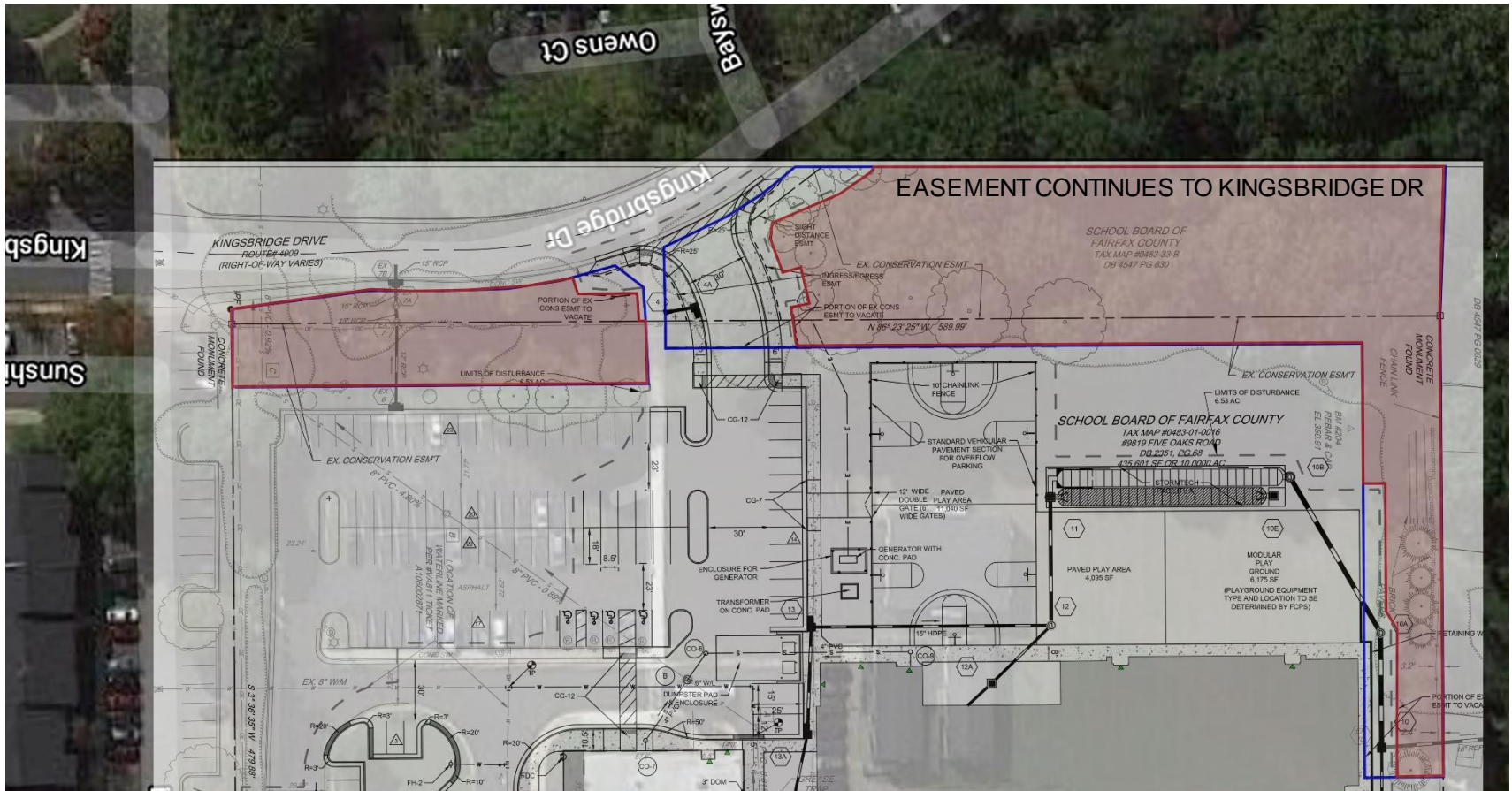
- ▶ Site entry
- Kiss & Ride
- Bus Pick-up/Drop-off







# Site Plan – Conservation Easement



## Legend:

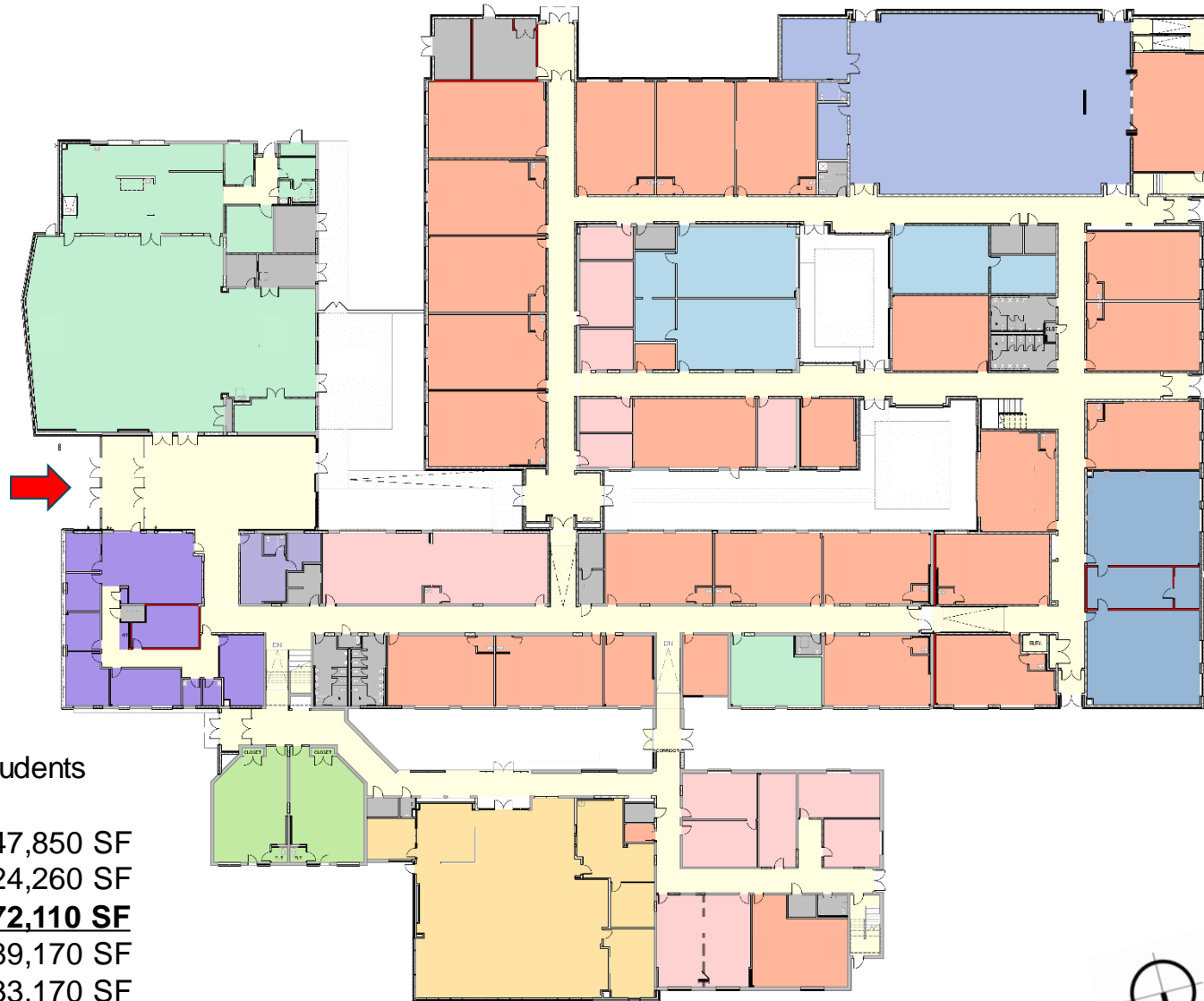
- Existing Easement
- Proposed Easement

## Conservation Easement:

- Land that is set aside to provide water quality benefits
- Typically land that has not been developed and must remain perpetually undisturbed
- To ensure that the County can take legal action in enforcing the use restrictions, land must be placed within an easement that is recorded in the County land records
- The Code has changed and Conservation Easements can no longer be utilized to satisfy water quality requirements



# Proposed First Floor Plan



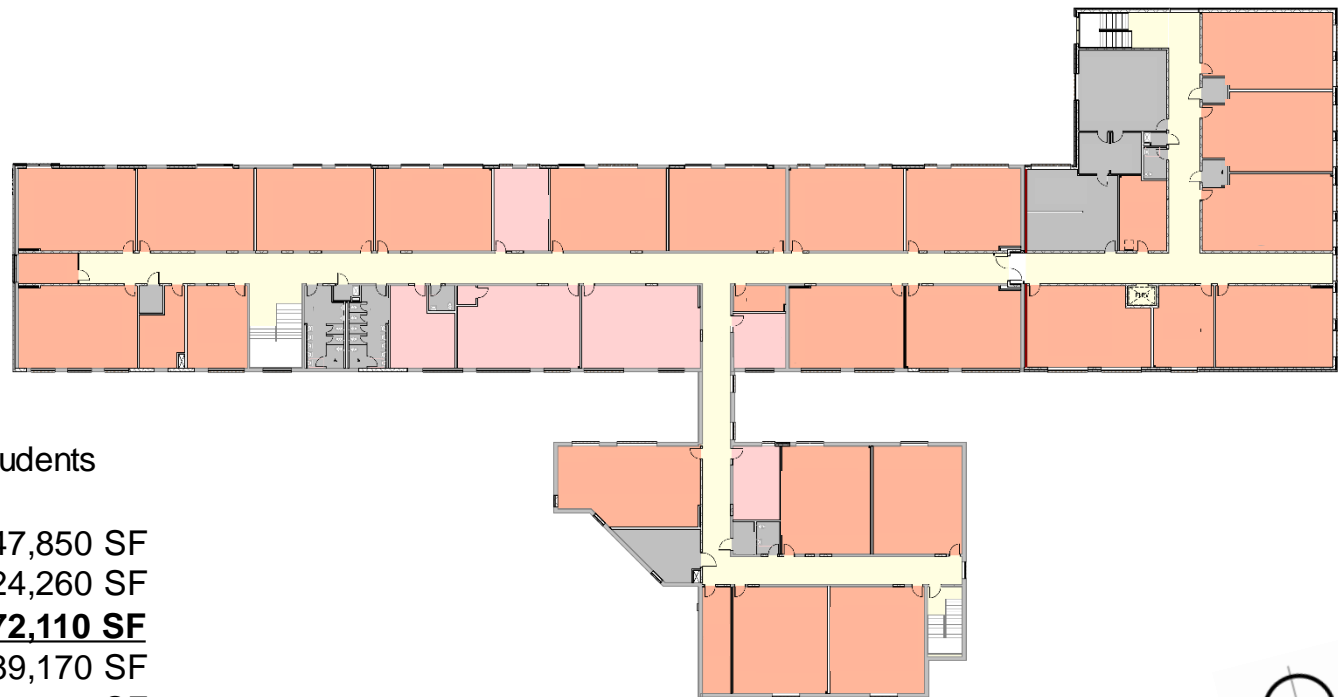
Design Capacity: 1,050 students

Existing 1 <sup>st</sup> Floor:	47,850 SF
Existing 2 <sup>nd</sup> Floor:	24,260 SF
<u>Existing Total Area:</u>	<b>72,110 SF</b>
Proposed 1 <sup>st</sup> Floor:	89,170 SF
Proposed 2 <sup>nd</sup> Floor:	33,170 SF
<u>Proposed Total Area:</u>	<b>122,340 SF</b>





# Proposed Second Floor Plan



Design Capacity: 1,050 students

Existing 1<sup>st</sup> Floor: 47,850 SF

Existing 2<sup>nd</sup> Floor: 24,260 SF

Existing Total Area: **72,110 SF**

Proposed 1<sup>st</sup> Floor: 89,170 SF

Proposed 2<sup>nd</sup> Floor: 33,170 SF

Proposed Total Area: **122,340 SF**



# Proposed Elevations



**Front Entrance**



## Materials

- Brick
- Metal Panels
- Glass

# Proposed Elevations



## Materials

- Brick
- Metal Panels
- Glass

## Gymnasium



## View from Five Oaks Road entry and Library addition

**Thank you!**

**QUESTIONS?**



**Fairfax County**  
**PUBLIC SCHOOLS**  
ENGAGE • INSPIRE • THRIVE

[www.fcps.edu](http://www.fcps.edu)