

# COMMUNITY MEETING

NOVEMBER 13, 2024



## Falls Church High School Renovation and Additions

# Team Introduction



## Fairfax County Public School

- Dr. Ricardy Anderson – Mason District Representative
- Janice Szymanski – Chief of Facilities Services
- Scott Eschbach – Director III
- Najib Hameed – Senior Manager II



## General Contractor

- Grunley Construction Company, Inc.

## Consultant Team



- Perkins Eastman Architects – Architect of Record
- LandDesign – Civil Engineer
- Ehlert Bryan – Structural Engineer
- Strickler Associates – MEP Engineer
- Nyikos-Garcia – Food Service Engineer

# Project Funding

- Planning/Design - 2017 School Bond
- Construction - 2021 School Bond
- Project Construction Contract Amount - \$133 Million

## Project Timeline

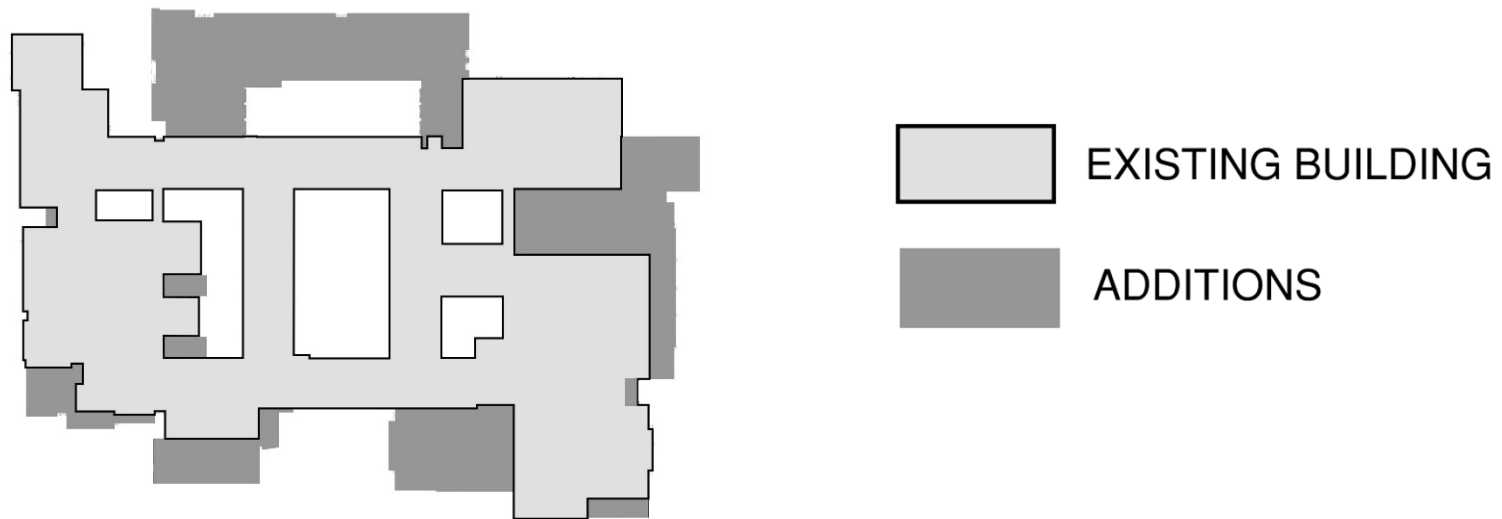
- Construction Award and Start – Spring 2022
- Project Completion - Summer 2026

# Prior to Construction



# Project Scope

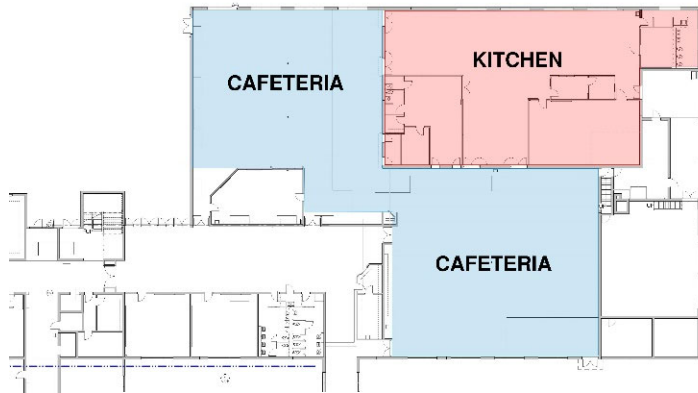
- Full renovation: new floor finishes, walls, ceilings, doors & windows
- New life safety systems; sprinkler, fire alarm, sound systems; new MEP systems, & new lighting;
- Design Capacity: 2,500 Students – An increase from current program capacity of 1,957 students
- 122,000SF of additions to the building (429,000SF Future Building):



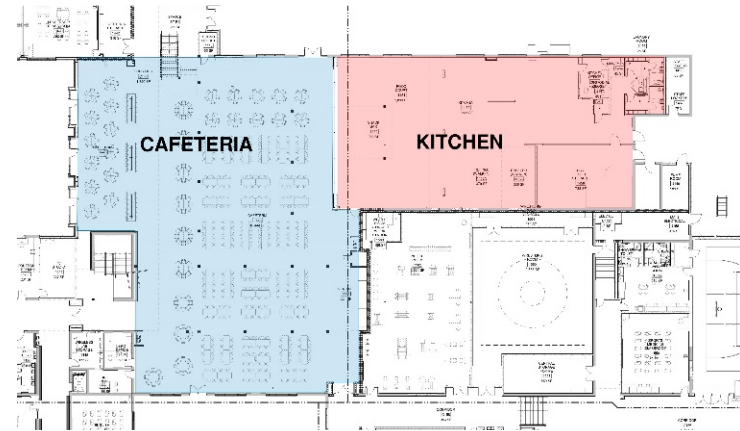
- Additions include new entry, admin suite, library, music suite, lecture hall, science labs, classrooms, aux gym, main gym expansion & physical education rooms

# Project Scope (cont.)

## Cafeteria and Kitchen Expansion:



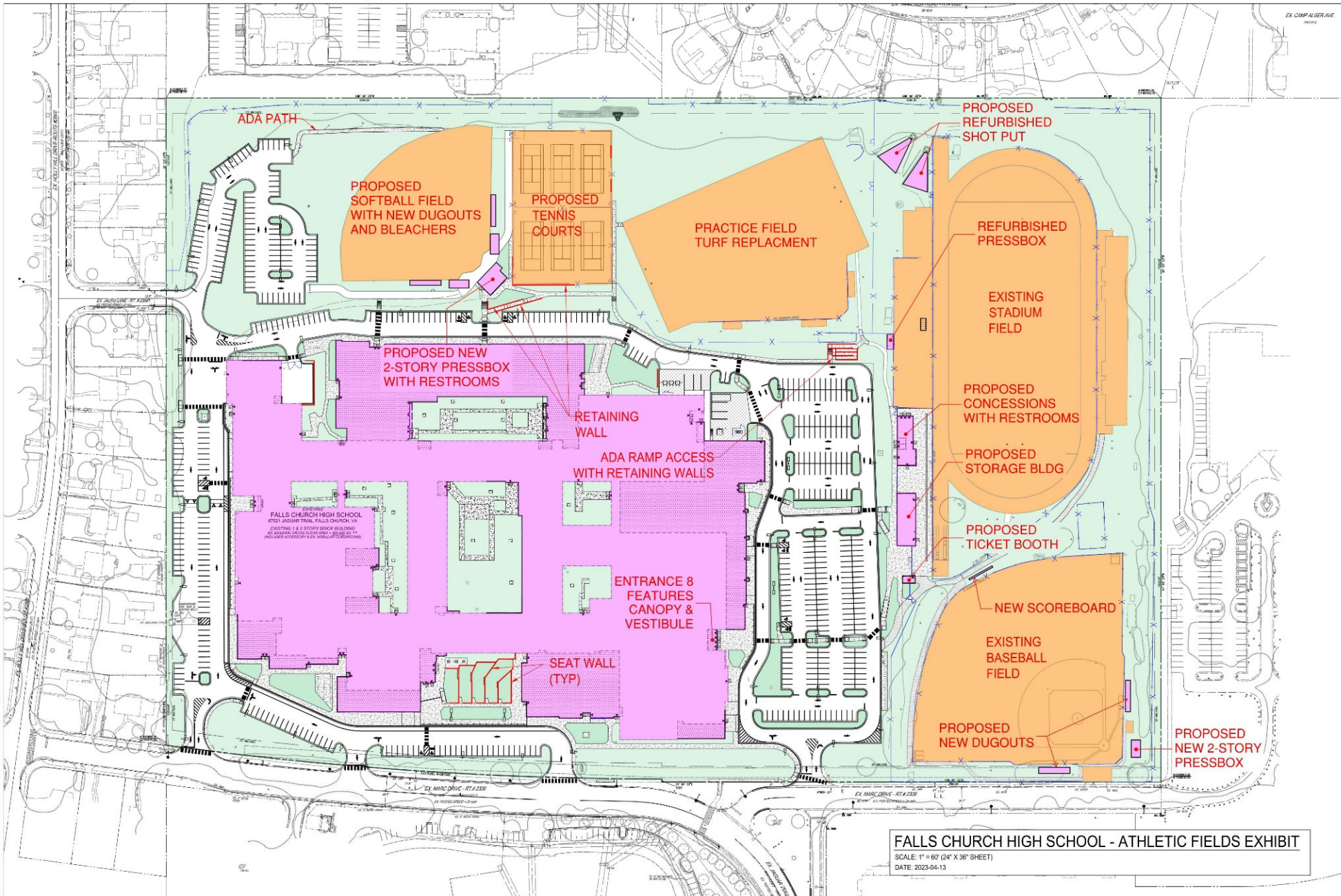
**EXISTING CAFETERIA & KITCHEN**



**NEW CAFETERIA & KITCHEN**

- Sustainability & CHPS Designed
- Improved kiss & ride and bus drop-off/pick-up circulation
- Site Improvement

# Site Plan – Exterior Work

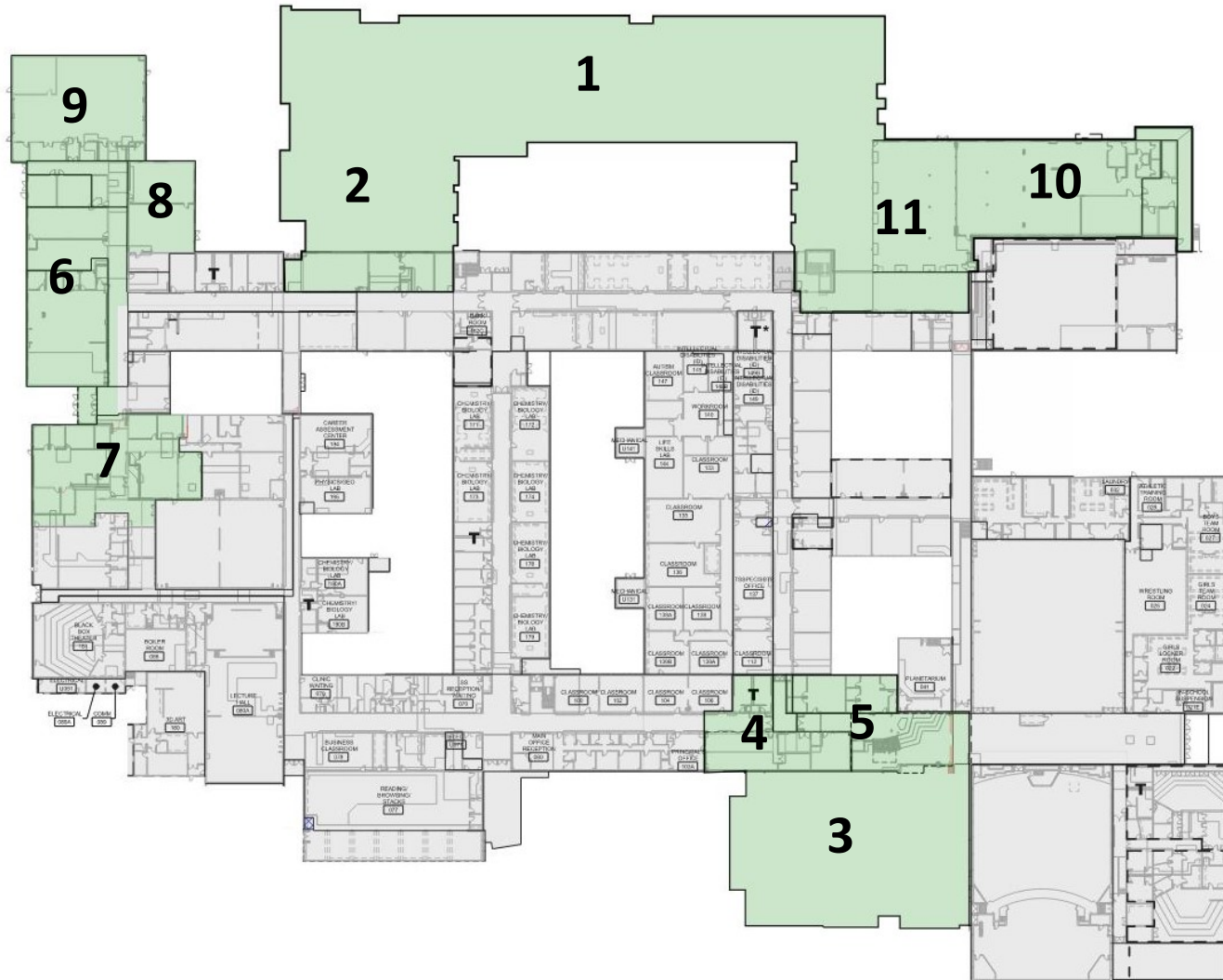


# Exterior Work Status

Item	Description	Status	Target Date
<b>Baseball</b>			
Scoreboard	N/A	Complete	Complete
Press Box, Dugouts; Backstop;	New two story CMU Pressbox. New one story wood frame dugouts.	Included in renovation	Cost & Schedule Being Developed
Baseball ADA Access		Complete	Complete
<b>Stadium</b>			
Entrance Gate to Stadium (Concessions/Restrooms, Storage, Ticket Booth)	Stadium plaza entrance with ornate metal fencing and gates which includes: new concessions stand with restrooms; new ticket booth; new field equipment storage building.	Included in renovation	By Fall 2025
Press Box updates		Complete	Complete
Gate panel to former ADA ramp		Complete	Complete
Drainage under Bleachers		Complete	Complete
Field Replacement		Complete	Complete
<b>Softball</b>			
Dugouts	New one story wood framed dugouts.	Included in renovation	Cost & Schedule Being Developed
Field Rotation	Field rotated 90 degrees for improved connection with the main building.	Included in renovation	Cost & Schedule Being Developed
Pressbox	New two story CMU pressbox with restrooms.	Included in renovation	Cost & Schedule Being Developed
Scoreboard	New state of the art score board.	Included in renovation	Cost & Schedule Being Developed
<b>Other</b>			
Lighting - All Fields	Complete replacement (poles and electrical) with LED lamping.	Included in renovation	Cost & Schedule Being Developed
Bleachers - Bball & Sball	New aluminum bleachers.	Included in renovation	Cost & Schedule Being Developed
Parking - near student trailers		Complete	Complete-Temp
Parking - site layout		Complete	Complete - Temp



# Phase 1 – Building Complete



1. Science Wing Addition
2. Library/Media Center Addition
3. Music Wing Addition
4. Guitar Classroom
5. Performing Arts Commons
6. Culinary
7. Special Education (half)
8. Design Tech Studio
9. Auto Shop
10. Kitchen
11. Cafeteria



# Phase 1 - Science Addition Complete



Exterior View

# Phase 1 - Library Complete



Exterior View

# Phase 1 - Library Complete



Interior Views

# Phase 1 - Music Addition Complete



Exterior Views

# Phase 1 - Music Wing Commons Complete



Interior Views



# Phase 1 - Black Box Complete



Interior Views

# Phase 1 - Band & Orchestra Rooms Complete



Interior Views



# Phase 1 – Auto Shop, Kitchen/Cafeteria Complete



Interior Views

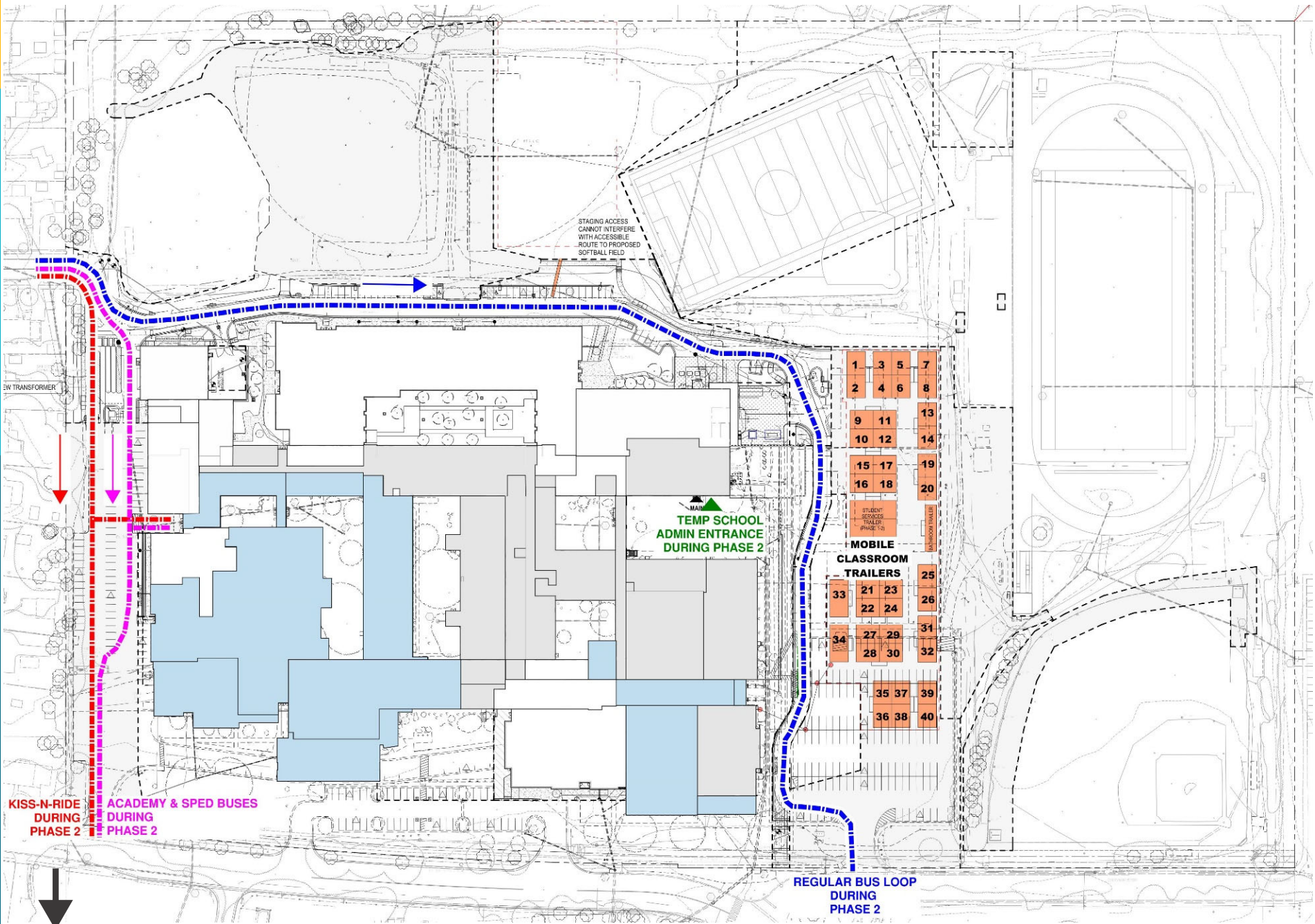
# Phase 1 - Culinary Complete



Interior Views



# Phase 2 - Site Traffic Flow



KISS-N-RIDE DURING PHASE 2

ACADEMY & SPED BUSES DURING PHASE 2

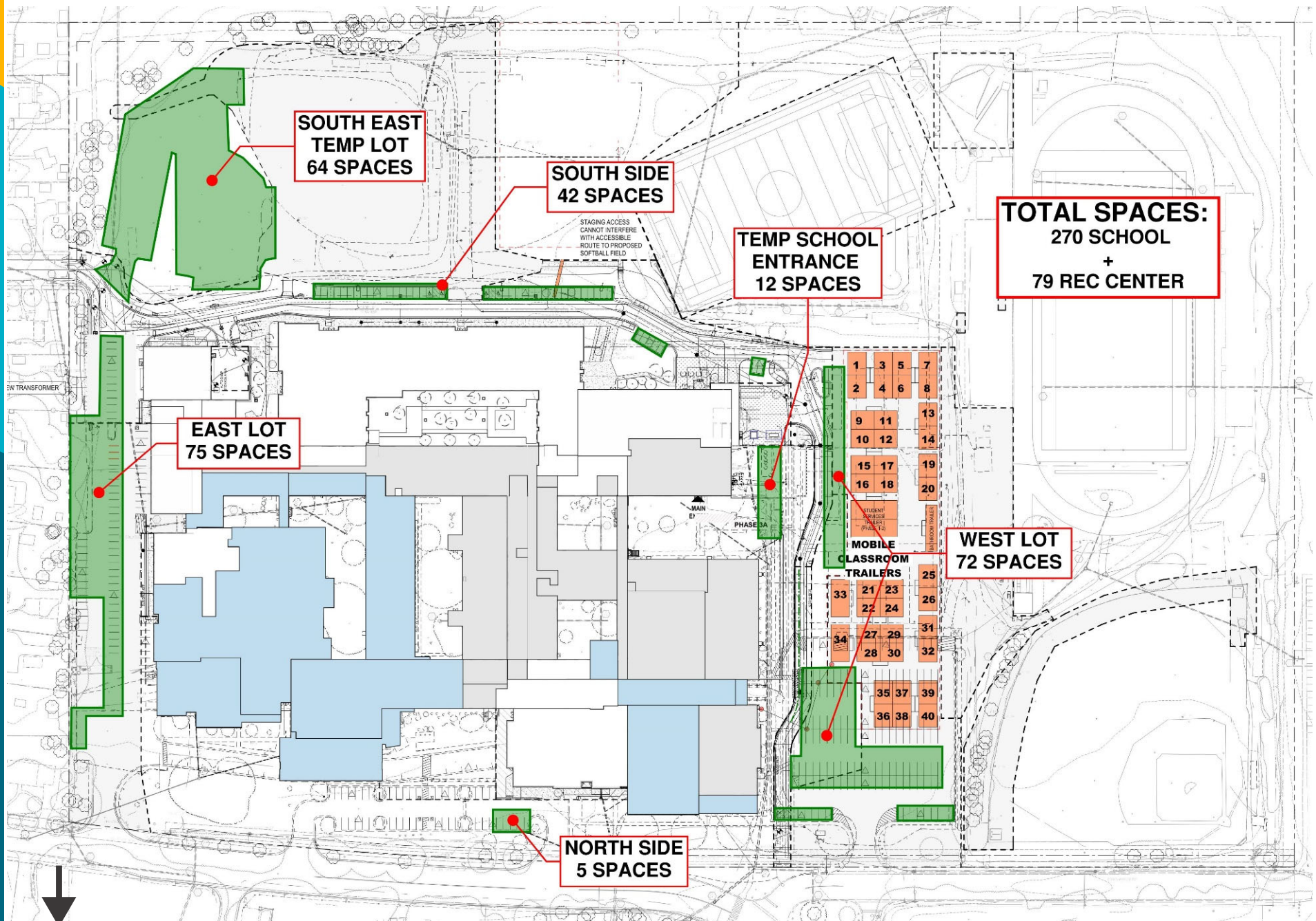
TEMP SCHOOL ADMIN ENTRANCE DURING PHASE 2

- |                                   |    |    |    |
|-----------------------------------|----|----|----|
| 1                                 | 3  | 5  | 7  |
| 2                                 | 4  | 6  | 8  |
| 9                                 | 11 | 13 |    |
| 10                                | 12 | 14 |    |
| 15                                | 17 | 19 |    |
| 16                                | 18 | 20 |    |
| STUDENT SERVICE TRAILER (PHASE 1) |    |    |    |
| MOBILE CLASSROOM TRAILERS         |    |    |    |
| 25                                |    |    |    |
| 26                                | 21 | 23 |    |
|                                   | 22 | 24 |    |
| 31                                | 27 | 29 |    |
| 32                                | 28 | 30 |    |
|                                   | 35 | 37 | 39 |
|                                   | 36 | 38 | 40 |

REGULAR BUS LOOP DURING PHASE 2

NORTH

# Phase 2 - Parking Map



NORTH

# Phase 2 - Before & After - Main Entry

Before



After



**New Materials: Brick & Masonry Units, Metal Panels, and Glass**

# Phase 2 - Proposed Elevation - Forecourt



PERKINS —  
EASTMAN

# Phase 2 - Interior Perspectives





# Phase 2 - Admin Wing Construction in Progress..



Exterior View

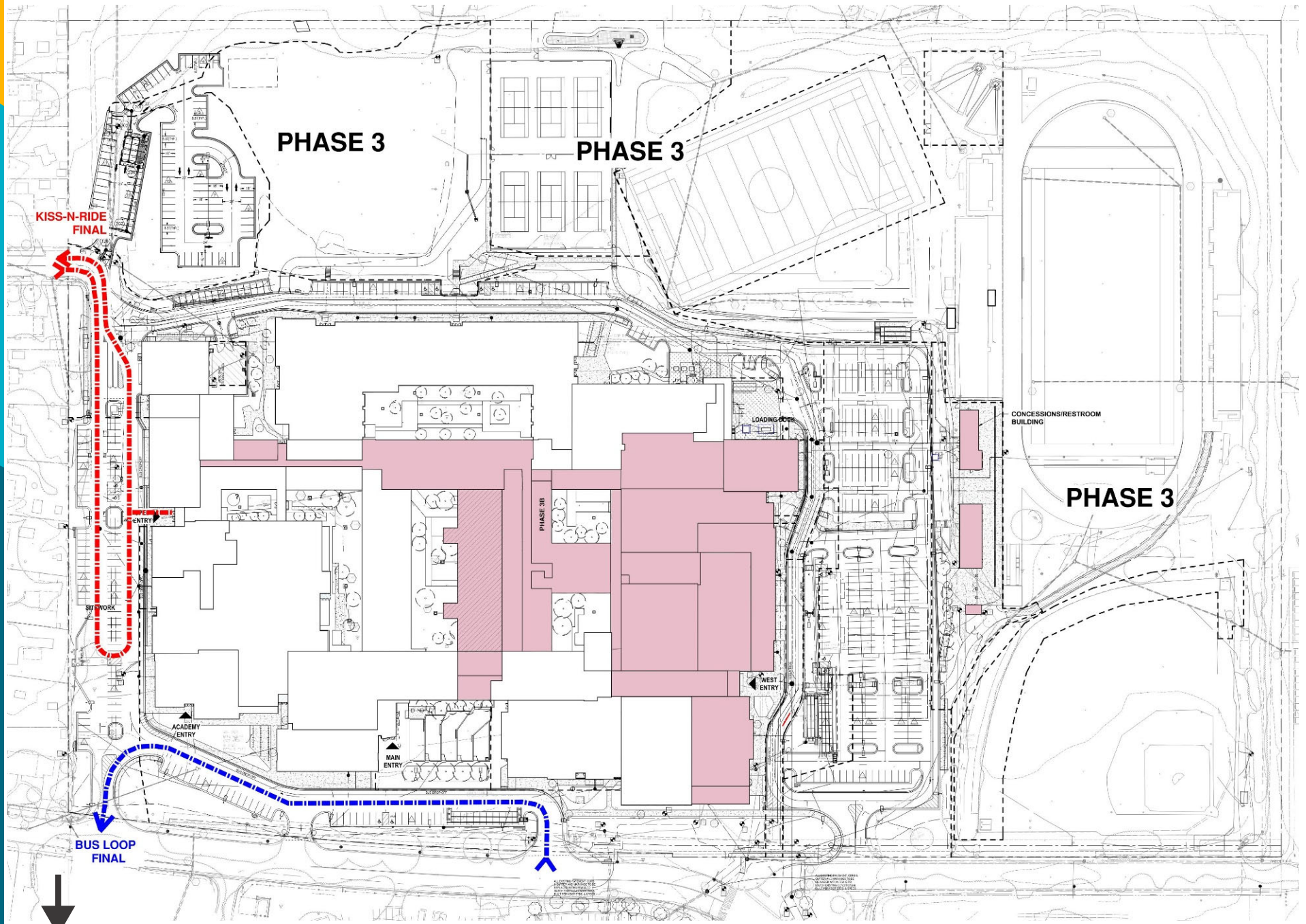
# Phase 2 - Social Studies Classrooms Complete



Interior Views

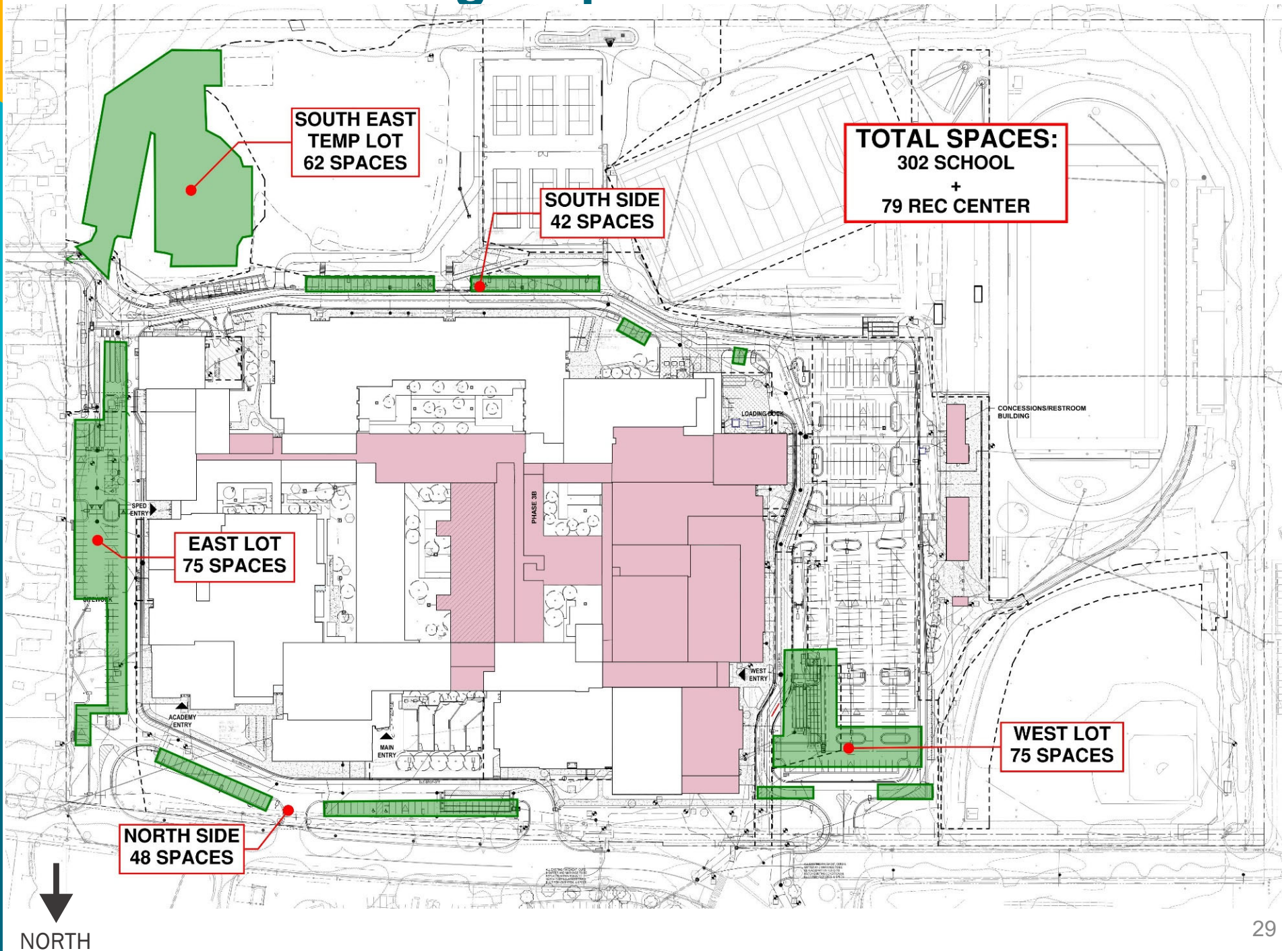


# Phase 3 - Site Traffic Flow

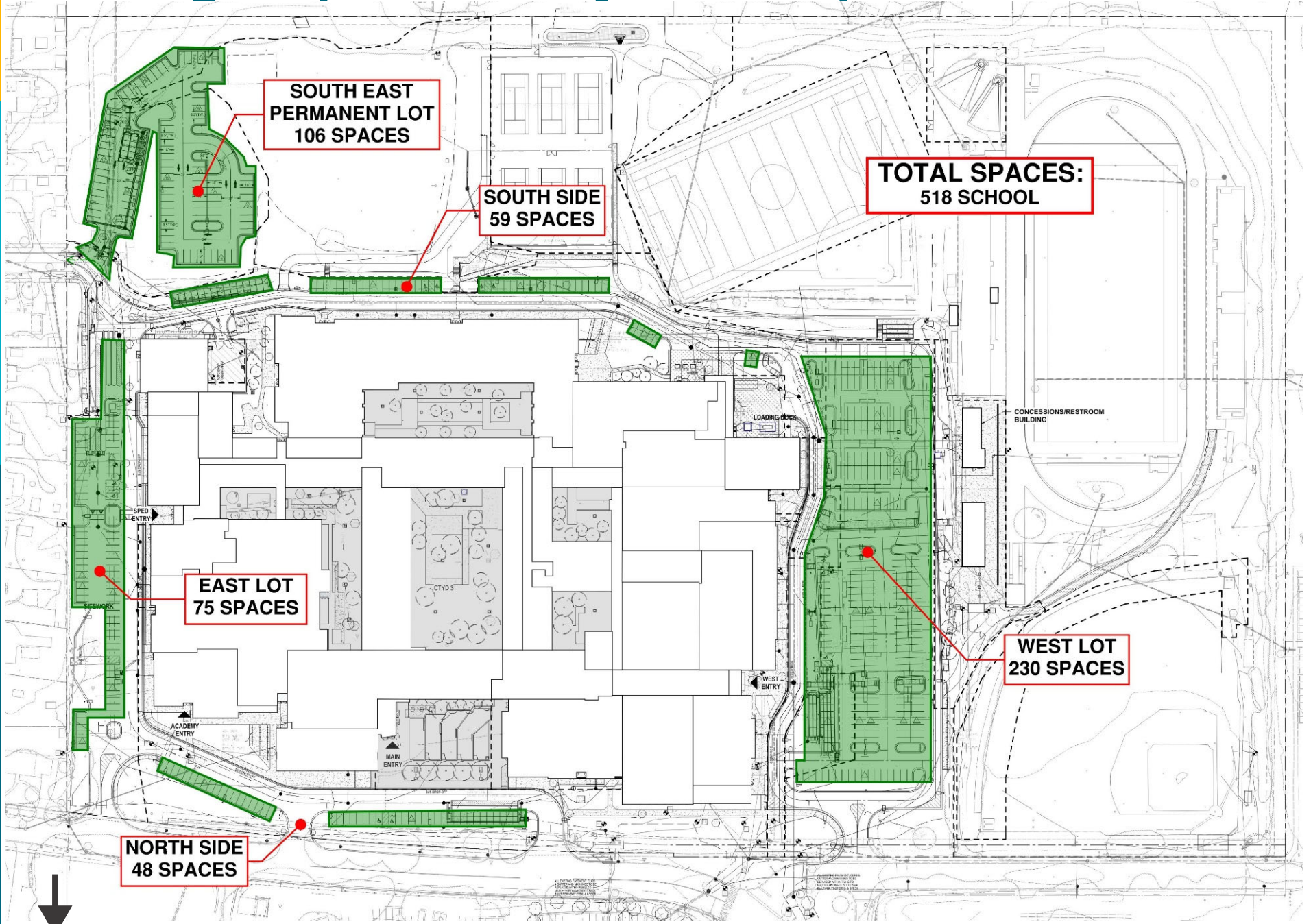


↓  
NORTH

# Phase 3 - Parking Map



# Parking Map after Project Completion



NORTH

# THANK YOU!

FOR MORE INFORMATION, GO TO [www.fcps.edu](http://www.fcps.edu) and  
SEARCH FOR FALLS CHURCH HIGH SCHOOL CAPITAL PROJECT

OR

<https://www.fcps.edu/falls-church-high-capital-project>



PERKINS —  
EASTMAN